



9700



Trailer Suspension Series

Configurations & Parts Identification



Advancing the Practical Application of Suspension Technology

Springfield, MO ■ (800) 654-8824 ■ (417) 862-5012
Fax (417) 862-2317 ■ www.hutchensindustries.com

Table of Contents

Pgs. 1-2	Application, Capacity, Standard Features, Options
Pg. 3	Options (cont.), How To Order
Pg. 4	Mounting Height Chart
Pg. 5	H and CH-9700 Overslung Bill of Materials, Hanger Chart A, Spring Seat Chart B
Pgs. 6-7	H and CH-9700 Overslung Illustrated
Pg. 8	U-Bolt Chart C, Bottom Plate Chart D, No-Hop Option Chart E
Pg. 9	H and CH-9700 Underslung Bill of Materials, Hanger Chart A

Pgs. 10-11	H and CH-9700 Underslung Illustrated
Pg. 12	U-Bolt Chart F, Spring Seat Chart G
Pg. 13	H and CH-9700 w/ Inverted U-Bolts Bill of Materials, Hanger Chart A
Pgs. 14-15	H and CH-9700 w/ Inverted U-Bolts Illustrated
Pg. 16	Spring Seat Chart B, Top Plate Chart H, U-Bolt Chart J
Pgs. 17-18	Optional 42 1/2" and 44" Axle Centers
Pgs. 19-20	Numerical Listing Of Parts

Application

The 9700 Series suspension is an indirect result of Hutchens' Rocker Bushing Improvement Program. It can be utilized anywhere a 7700 Series suspension can, and almost all of the suspension components are interchangeable. However, the 9700 Series suspension offers several options that were previously unavailable with the 7700 Series, as well as numerous improvements.

Capacity

Like our 7700 Series, the 9700 Series suspension has a Gross Axle Weight Rating (G.A.W.R.) of 22,400 lbs. when equipped with single leaf, two leaf, standard three leaf and seven leaf springs. Heavy-duty three leaf and eight leaf springs raise the G.A.W.R. to 25,000 lbs.

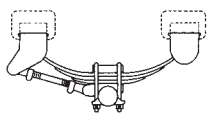
Features

- ▶ A Huck "lockbolt" fastening system for the rocker/rocker hanger assembly that is virtually maintenance free.
- ▶ Lightweight, fabricated hangers and equalizers with 1/2" wear pads to reduce wear at all spring contact points.
- ▶ Cast steel hangers and equalizers with increased wall thickness at spring contact points...eliminating the need for additional wear pads.
- ▶ The industry's finest rocker bushing...combining a new rubber compound and improved bushing installation techniques, coupled with dimensional changes in the bushing and fasteners.
- ▶ An improved spring seat design that more efficiently transfers forces from the axle to the springs.
- ▶ A redesigned top plate that is lighter and offers greater stability under U-bolt clamp loads.
- ▶ Wrapped fabricated torque arm eye ends that utilize a single 5/8" bolt and a higher clamp load to prevent separation under extreme conditions.
- ▶ Torque arm screws that are coated with "NEVER-SEEZ"®, and then painted to resist corrosion while allowing easy adjustment for suspension alignment.

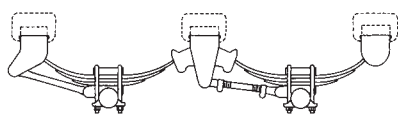
Except for the rockers and rocker hangers, the component parts of all 7700 and 9700 Series suspensions are completely interchangeable.

Options

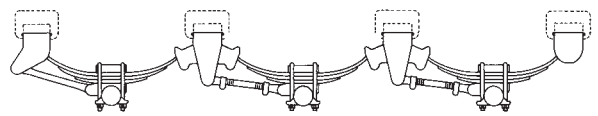
The 9700 Series suspensions are available in single, tandem and multi-axle configurations.



Single Axle (S)

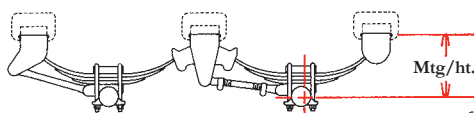


Tandem Axle (T)

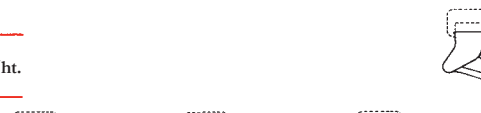


Tri-Axle (Tri)

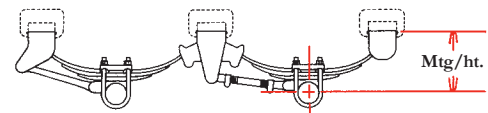
In addition to the standard overslung configuration, an underslung configuration is available for reduced mounting heights. Mounting height (Mtg/ht) is the distance from the center line of the axle to the top of the spring hangers.



Overslung (OS)
w/ Standard U-Bolt Configuration



Underslung (US)

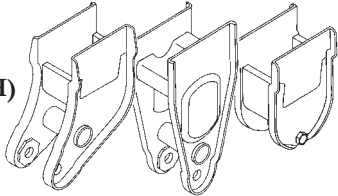


Inverted U-Bolt
Configuration

The standard 9700 Series suspensions have U-bolts that point downward (threads and nuts below the axle). However, a model is available with inverted U-bolts (threads and nuts above the axle).

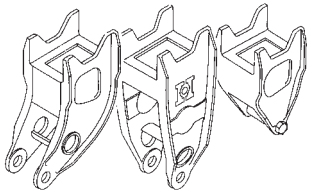
All 9700 Series suspensions are available with either fabricated or cast steel hangers and rockers. These hangers come in various styles.

Fabricated (H)

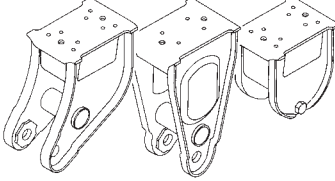


Straddle Mount (Str/mt)
Straddle Mount Hangers are for use with box type frames. Each hanger straddles the frame and is welded to both sides of the frame. This is our strongest hanger mounting.

Cast (CH)



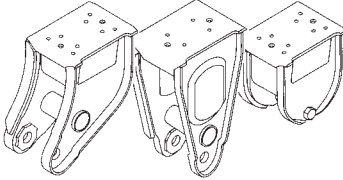
Under Mount (Un/mt)
Under Mount hangers are welded flush to the bottom of the frame. For an added weight savings in I-beam applications special fabricated front and rear hangers without top plates are available.



Fabricated (H)

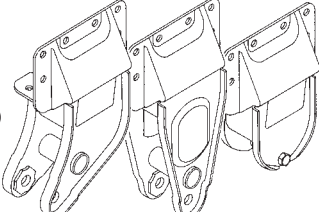
Under Mount Weld-on (Un/mt/wo) and Side Mount Weld-on (Si/mt/wo)
These versatile Weld-on hangers can be used for either under mount or side mount applications.

Side Mount (Si/mt)
Side Mount Hangers are welded to the side of the frame. They are useful on flatbed sliders and "maximum cube" vans.



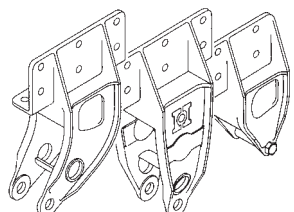
Cast (CH)

Fabricated (H)

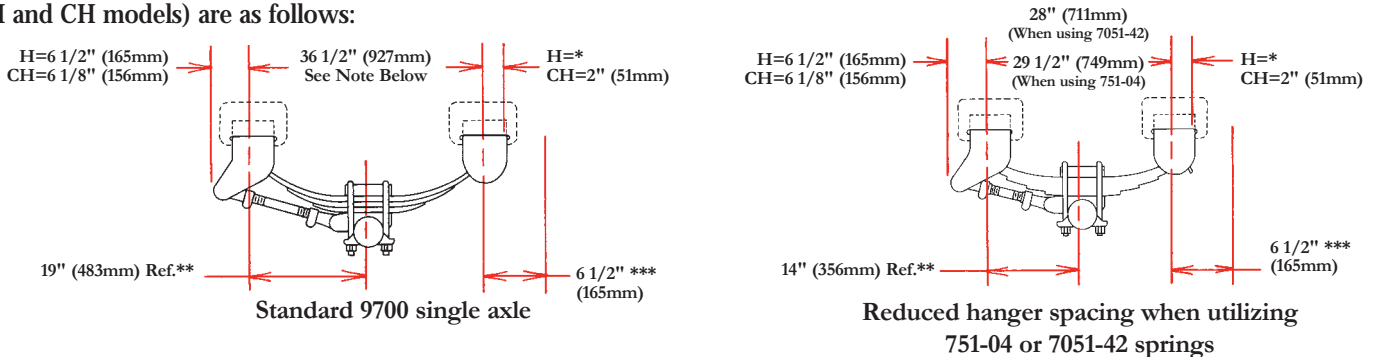


Flange Mount (Fl/mt)
Flange Mount hangers are available with or without bolt holes. Hangers may be bolted (Fl/mt/bo) or welded (Fl/mt/wo) to the frame, or a combination of bolting and welding may be used.

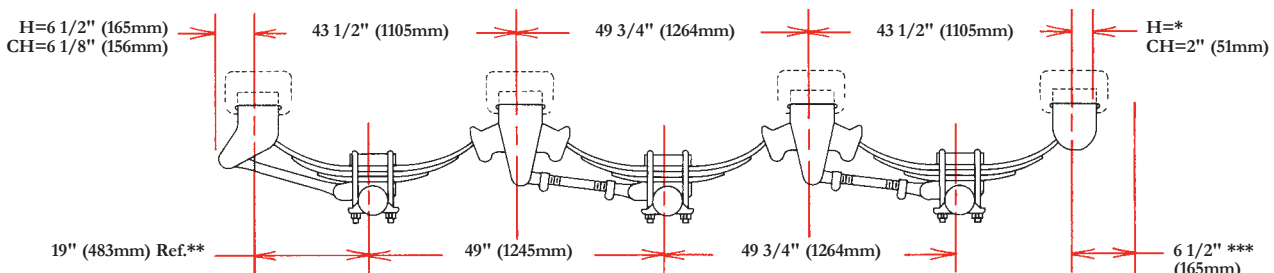
Cast (CH)



Axle spacings of 42 1/2", 44" and 49" will be covered in this publication. Axle spacings greater than 49" will be covered in the widespread section. Unless otherwise specified, axle centers are assumed to be 49". Hanger spacings for single axle units (H and CH models) are as follows:

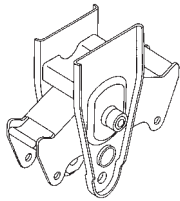


Hanger spacings for tandem axle units with 42 1/2" and 44" axle centers (H and CH models) are covered on pages 17 and 18 of this publication. Hanger spacings for tandem axle units with 49" axle centers (H and CH models) are covered with their appropriate illustration. Hanger spacings for tri-axle units with 49" axle centers (H and CH models) are as follows:

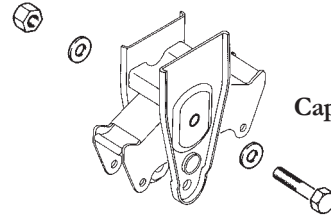


Note: When using 751-06, 752-01, 752-06 and 16316-01 springs, this hanger spacing should be 38" (965mm).
* Str/mt = 3 1/2" (89mm), Un/mt & Si/mt = 3 7/8" (99mm), Fl/mt = 5 1/2" (140mm). ** Ref: This dimension may vary with changes in springs, spring seat heights, etc. *** Recommended spring clearance.

As an option to the Huck fastener, a single cap screw fastener is available for the rocker and center rocker hanger. This system is also offered as a replacement for the Huck fastener should that become necessary.

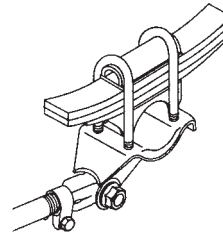


Huck Fastener (Std.)



Cap Screw (Opt.)

Spring seats and U-bolts to fit 5" round axles (shown below) are standard. These spring seats range in height from 3/4" to 4 3/4". Heavy duty spring seats as well as spring seats and U-bolts for special axle shapes are available as an option.



No-Hop Attach Fitting Rear Axle Only

A no-hop feature is available for rear axle application on overslung H and CH 9700's with the standard U-bolt configuration. This feature is designed to prevent rear axle rotation and the resulting "chatter" or "hop" that sometimes occurs when an empty trailer brakes hard. All overslung H and CH 9700 Series suspensions are available with optional 3/4" U-bolts in lieu of the standard 7/8" U-bolts. These model variations are standard catalog items. Many more combinations are possible. If your particular need is not covered in this publication, please contact Hutchens for assistance.

How To Order Your 9700 Series Suspension System

With so many options available on the 9700 Series suspensions, the basis of any order must begin with a complete description of the unit. The following procedure will provide the descriptive information required:

1. Determine the number of axles required and the spacing of these axles. Unless otherwise specified, tandem axles with 49" axle centers are assumed.
2. Select the style of hangers required to mount the suspension on your particular frame or subframe. Specify whether these hangers are to be fabricated (H) or cast (CH) steel.
3. Determine the mounting height (Mtg/ht) your application requires. For your convenience, a Mounting Height Chart may be found on Page 4 of this booklet. From this chart please note that mounting height is dependent upon:
 - a) Suspension configuration – Overslung or Underslung. Unless otherwise specified, suspension configuration is assumed to be overslung.
 - b) Axle size – 5" Round or other. (Hutchens does not manufacture or sell axles.)
 - c) Spring seat height – 3/4" to 4 3/4" in 1/2" increments.
 - d) Spring type – Standard or Heavy-Duty, number of leaves and spring arch. Hutchens is not a spring manufacturer. As a service to our customers we will supply springs upon request. Whether or not we provide you with springs, we will need to know what springs you intend to use to assure we furnish the appropriate U-bolt for the spring and spring seat combination you've ordered.
4. Choose which U-bolt size you would like (either the standard 7/8" or the optional 3/4" size).

Note: In many instances more than one combination will result in the same mounting height. Therefore, all of the aforementioned factors should be taken into consideration when ordering.

Example: A tandem axle (T) 9700 Series suspension requiring a mounting height of 16" and fabricated (H) undermount hangers (Un/mt) for use with 3/4" U-bolts and 5" round axles with 354-00 springs would be ordered as follows:

Quantity	Fabricated Steel	Series No.	Tandem Axle	Undermount Hangers	For use with 3/4" U-bolts	5" Round Axles	See Mtg/hr Chart	With 354-00 Springs
1 ea.	H	9700	T	Un/mt	3/4" U-bolts	5" rd.	3/4" seat	w/354-00 sprgs.

1 ea. H9700T - Un/mt - 3/4" U-bolts - 5" rd. - 3/4" seat - w/ 354-00 springs

Mounting Height Chart: Nominal Values For No-Load Conditions

5" (127mm) Round Axles With 3/4" (19mm) Spring Seats

Spring Part No.	Description	G.A.W.R. (lbs.)	Overslung Configuration				Underslung Configuration			
			Tandem Axle		Single Axle		Tandem Axle		Single Axle	
			49" (1245mm) Fabricated	15.73" (400mm) Cast	36.5" (927mm) Fabricated	14.92" (379mm) Hgr. Spacing	49" (1245mm) Fabricated	7.12" (181mm) Cast	36.5" (927mm) Fabricated	6.31" (160mm) Cast
324-01	Hi-arch, 2-leaf	22,400	16.00" (406mm)	15.73" (400mm)	15.50" (394mm)	14.92" (379mm)	7.50" (191mm)	7.12" (181mm)	7.00" (178mm)	6.31" (160mm)
325-01	Med-arch, 2-leaf	22,400	14.50 (368)	14.21 (361)	13.75 (349)	13.34 (339)	6.00 (152)	5.60 (142)	5.25 (133)	4.74 (120)
326-01	Low-arch, 2-leaf	22,400	13.75 (349)	13.36 (339)	13.25 (337)	12.49 (317)	5.25 (133)	4.74 (120)	4.75 (121)	3.88 (99)
354-00	Hi-arch, 3-leaf	22,400	16.00 (406)	15.80 (401)	15.75 (400)	14.98 (380)	7.00 (178)	6.65 (169)	6.75 (172)	5.84 (148)
355-00	Med-arch, 3-leaf	22,400	14.50 (368)	14.15 (359)	14.00 (356)	13.26 (337)	5.50 (140)	5.00 (127)	5.00 (127)	4.12 (105)
356-00	Low-arch, 3-leaf	22,400	13.75 (349)	13.43 (341)	13.25 (337)	12.56 (319)	4.50 (114)	4.28 (109)	4.00 (102)	3.41 (87)
363-00	Low-arch, 1-leaf	22,400	13.75 (349)	13.38 (340)	13.25 (337)	12.49 (317)	5.75 (146)	5.32 (135)	5.25 (133)	4.44 (113)
365-00	Hi-arch, 3-leaf H.D.	25,000	16.00 (406)	15.77 (401)	15.75 (400)	14.95 (380)	6.50 (165)	6.17 (157)	6.25 (159)	5.36 (136)
365-01	Low-arch, 3-leaf H.D.	25,000	13.75 (349)	13.52 (343)	13.25 (337)	12.66 (322)	4.25 (108)	3.92 (100)	3.75 (95)	3.07 (78)
751-01	Low-arch, 7-leaf	22,400	13.75 (349)	13.66 (347)	13.25 (337)	12.83 (326)	3.75 (95)	3.54 (90)	3.25 (83)	2.70 (69)
751-05	Hi-arch, 7-leaf	22,400	16.00 (406)	15.70 (399)	15.50 (394)	14.88 (378)	6.00 (152)	5.57 (141)	5.50 (140)	4.77 (121)
751-06	Hi-arch, 7-leaf	22,400	NR	NR	16.50 (419)*	15.52 (394)*	NR	NR	6.50 (165)*	5.39 (137)*
752-01	Low-arch, 8-leaf H.D.	25,000	14.25 (362)	14.12 (359)	13.75 (349)	13.28 (337)	3.75 (95)	3.49 (89)	3.25 (83)	2.66 (68)
752-05	Hi-arch, 8-leaf H.D.	25,000	16.50 (419)	16.22 (412)	16.25 (413)	15.41 (391)	6.00 (152)	5.58 (142)	5.75 (146)	4.79 (122)
752-06	Hi-arch, 8-leaf H.D.	25,000	NR	NR	16.75 (426)*	16.03 (407)*	NR	NR	6.25 (159)*	5.41 (137)*
16316-01	Low-arch, FRP H.D.**	24,000	14.50 (368)	13.87 (352)	14.25 (362)*	13.26 (337)*	4.50 (114)	4.41 (112)	4.25 (108)*	3.80 (97)*
16710-01	Med-arch, 2-leaf, 2 stage	22,400	14.75 (375)	14.48 (368)	14.25 (362)	13.60 (345)	5.25 (133)	5.17 (131)	4.75 (121)	4.29 (109)
17882-01	Med-arch, 2-leaf, 2 stage	22,400	NR	NR	NR	NR	NR	NR	NR	NR
24784-01	Hi-arch, 3-leaf L.D.	15,000	16.00 (406)	15.80 (401)	15.75 (400)	14.98 (380)	7.00 (178)	6.65 (169)	6.75 (172)	5.84 (148)

* In single axle applications use 38" (965mm) hanger spacings only.

** FRP mounting heights include additional 1/4" (6mm) for reinforced seats.

Notes

1. Mounting heights given are for units with 5" (127mm) round axles and 3/4" (19mm) spring seats. Add 1/2" (13mm) to the mounting height shown for each 1/2" (13mm) increase in spring seat height.
2. The mounting heights for 5" x 5" (127mm x 127mm) square axles are the same as those for 5" (127mm) round axles. To obtain the mounting heights for overslung 4" x 6" (102mm x 152mm) rectangular axles add 1/2" (13mm) to the appropriate 5" (127mm) round mounting height.
3. Mounting heights shown are for Undermount, Sidemount and Flangemount hangers. Subtract 1/4" (6mm) for Straddlemount hangers.
4. Mounting heights must not exceed 17 1/4" (438mm) on No-Hop suspensions. For best performance, do not exceed 17 1/4" (438mm) mounting heights on any suspension.
5. For single axle units with 38" (965mm) hanger spacings add approximately 1/4" (6mm) to the 36 1/2" (927mm) mounting height.
6. It is recommended that a minimum of 4 1/2" (114mm) vertical clearance be maintained above the tires with trailer or chassis in an unloaded condition. Also, a minimum of 4" (102 mm) is required between the axle and the frame. When using mounting heights less than 6 1/2" (165 mm) it may be necessary to modify the trailer or chassis frame to achieve the required clearances.

H-9700 and CH-9700 (Overslung)

Bill of Materials

Item	Part No.	Quantity		Description
		Single Axle	Tandem Axle	
1	See Chart A, Below	2	2	Front Spring Hanger
2	See Chart A, Below	0	2	Center Rocker/Rocker Hanger Assembly
3	See Chart A, Below	2	2	Rear Spring Hanger Assembly
4	71902	4	8	Radius Rod Bolt - Hex Bolt - 1 - 14 UNS x 5"
5	16398-04	1	2	Radius Rod w/ Bushing - 19.25 LG
6	10562-00	4	8	Flange Locknut - 1 - 14 UNS, GRF, Phosphate & Oil
7	See Chart C, Page 8	4	8	U-Bolt - Standard 7/8" U-Bolt (Shown)
8	16868-01	2	4	Top Plate
9	17350-02	2	4	Galvanized Liner ①
10	See Spring Appendix	2	4	Spring Assembly - Standard 3-Leaf (Shown)
11	See Chart B, Below	2	4	Spring Seat - 5" Round (Shown)
12	See Chart D, Page 8	2	4	Bottom Plate - 5" Round (Shown)
13	35-00 or 817-00	8 8	16 16	Washer - PL, 15/16 ID x 1 3/4 OD (For Std. 7/8" U-Bolt Shown) Washer - 1/8" x 13/16 ID x 1 1/2 OD (For Optional 3/4" U-Bolt)
14	34-04 or 16303-01	8 8	16 16	Hex Nut - 7/8" - 14 UNF (For Std. 7/8" U-Bolt Shown) Hex Nut - 3/4" - 16 UNF (For Optional 3/4" U-Bolt)
15	715-00	1	2	Non-Adj. Radius Rod w/ Rubber Bushing
16	See Chart E, Page 8	0	2	Spring Seat - Replaces Rear Spring Seat Only
17	See Chart E, Page 8	0	2	Attach Fitting - Replaces Rear Bottom Plate Only
18	See Chart E, Page 8	0	2	Adj. Radius Rod w/ Bushing - Replaces 1 Adj. and 1 Non-Adj. Radius Rod on Rear Axle Only
19	7717-01	2 per Hanger		Washer Bushing - Replaces Sideplate Washer 10561-00 on Fabricated (H) Front and Center Hangers Only
20	722-00	2 per Rad. Rod		Radius Rod Bushing Only - 3" LG
21	37-03	2 per Rocker 1 per Rear Hgr.		Hex Lock Nut - 5/8" - 18 UNF, GRB (Shipped loose, not part of center rocker & hanger assy. However it is part of the rear hanger assy.)
22	756-00	2 per Rocker 1 per Rear Hgr.		Sleeve Spacer - 3/4 OD x 18 GA x 3 1/4 LG (Shipped loose, not part of center rocker & hanger assy. However it is part of the rear hanger assy.)
23	759-00	2 per Rocker 1 per Rear Hgr.		Hex Bolt - 5/8" - 18 UNF x 4 1/2 LG, GR2 (Shipped loose, not part of center rocker & hanger assy. However it is part of the rear hanger assy.)
24	11154-00	1 per Rocker		Hex Lock Nut - 1 1/8" - 7 UNC, GR5
25	837-00	2 per Rocker		Washer - 1/8" x 1 1/4 ID x 2 1/4 OD
26	16158-01 or 17784-01	0 0	2 2	Fabricated Rocker Assembly w/ Rubber Bushing (Shown) Cast Rocker Assembly w/ Rubber Bushing (Not Shown)
27	18723-01	1 per Rocker		Rocker Bushing Only - Rubber
28	16150-01	1 per Rocker		Hex Cap Screw - 1 1/8" - 7 UNC x 6.62" LG, GR5
29	16353-01	1 per Rocker		Rocker Replacement Bolt Kit Consisting of 1 ea. 16150-01, 2 ea. 837-00, 1 ea. 11154-00, 2 ea. 759-00, 2 ea. 756-00 and 2 ea. 37-03

Chart A - Hanger: Fabricated (H) and Cast (CH) Hangers

Description	Part No.	Str/mt	Un/mt	Hanger Configuration				
				Un/mt (I-beam)	Si/mt	Fl/mt/wo	Fl/mt/bo	
Front Hgr., Fab. (H)	7701-	-01	20728-01	16481-01	L 20729-01 R 20730-01	L05 R-06	L-07 R-08	
Front Hgr., Cast (CH)		702-01	L 16291-03 R 16291-04	NA	L 16291-03 R 16291-04	L 702-09 R 702-10	L 702-11 R 702-12	
Rocker & Hgr. Assy., Fab. (H)	16319-	-01	-02	-02	-04	-08	-07	
Rocker & Hgr. Assy., Cast (CH)	16319-	-51	-52	-52	-52	-58	-57	
Rocker Hgr. Only, Fab. (H)		16169-01	16171-01	16171-01	16175-01	16179-01	16178-01	
Rocker Hgr. Only, Cast (CH)		16196-03	16197-03	16197-03	16197-03	16199-05	16199-03	
Rear Hgr. Assy., Fab. (H)	7703-	-01	20732-01	16483-01	L 20733-01 R 20734-01	L-05 R-06	L-07 R-08	
Rear Hgr. Assy., Cast (CH)		712-01	L 16293-01 R 16293-02	NA	L 16293-01 R 16293-02	L 712-09 R 712-10	L 712-11 R 712-12	

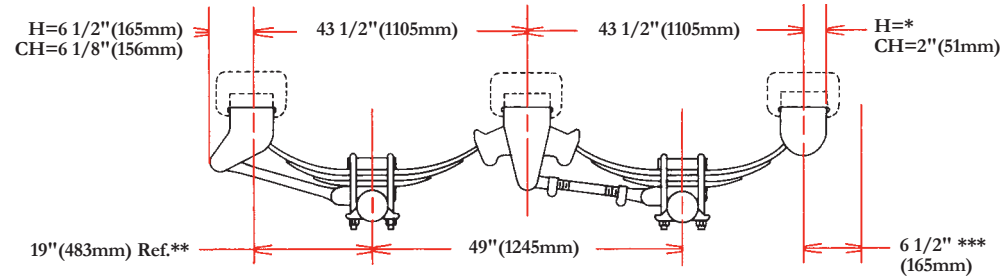
Chart B - Spring Seat

Seat Height	3/4"	1 1/4"	1 3/4"	2 1/4"	2 3/4"	3 1/4"	3 3/4"	4 1/4"	4 3/4"	
5" Round	19360-	-01	-02	-03	-04	-05	-06	-07	-08	-09
5" x 5" Square	19365-	-01	-02	-03	-04	-05	-06	-07	-08	-09
4" x 6" Rect.	19364-	-01	-02	-03	-04	-05	-06	-07	-08	-09

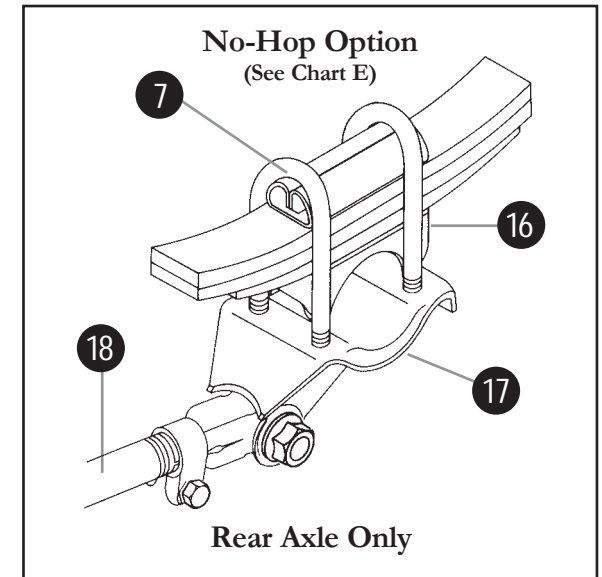
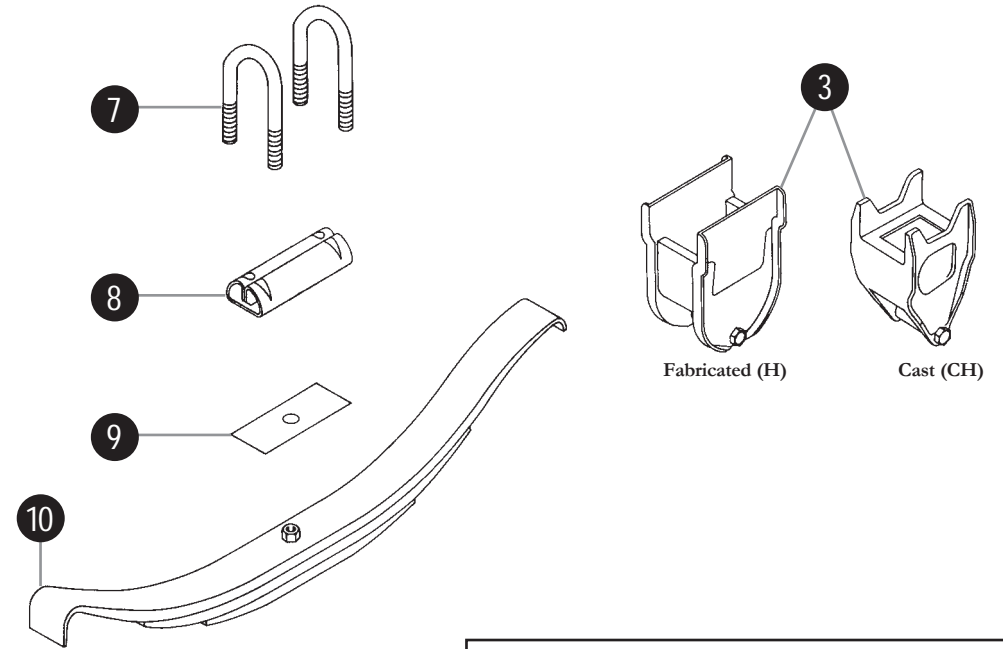
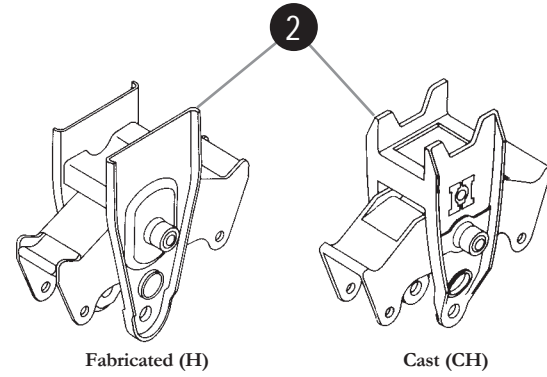
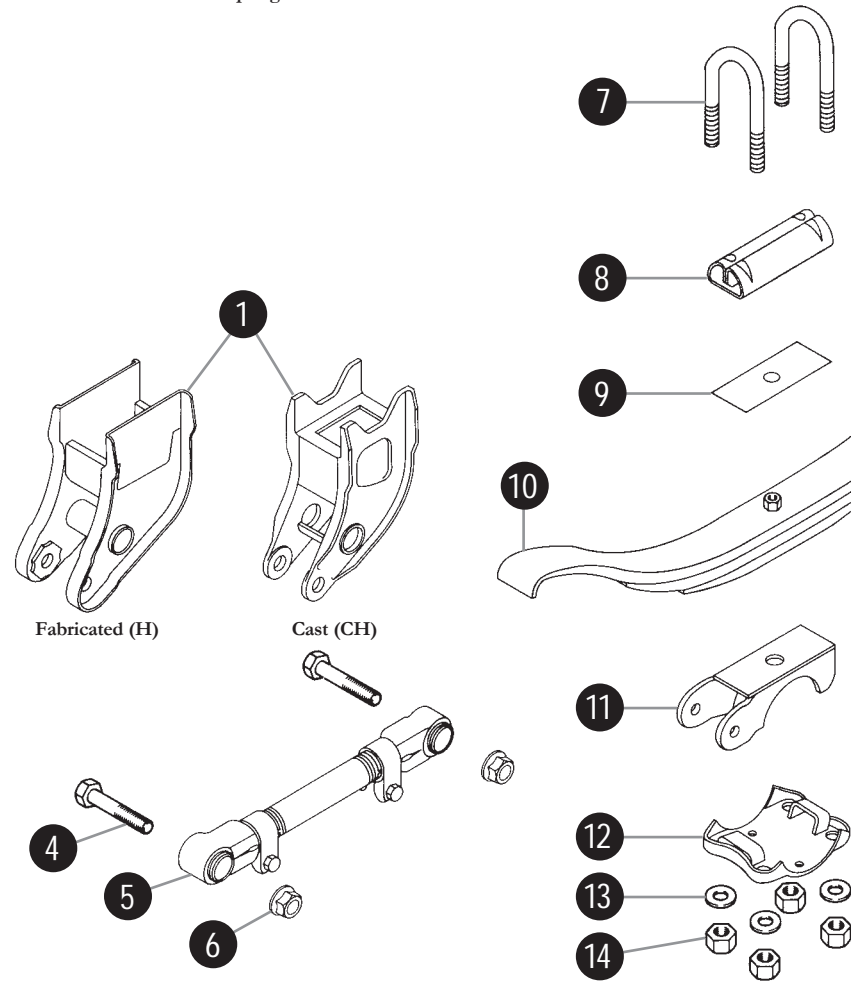
① Galvanized liners are required on the tension (top) side of each plate when taper (i.e., single, two and three leaf) springs are utilized. One spring liner per spring (for top leaf) will be shipped loose from Hutchens or spring vendor. Liners are not required on flat plate (seven or eight leaf) springs.



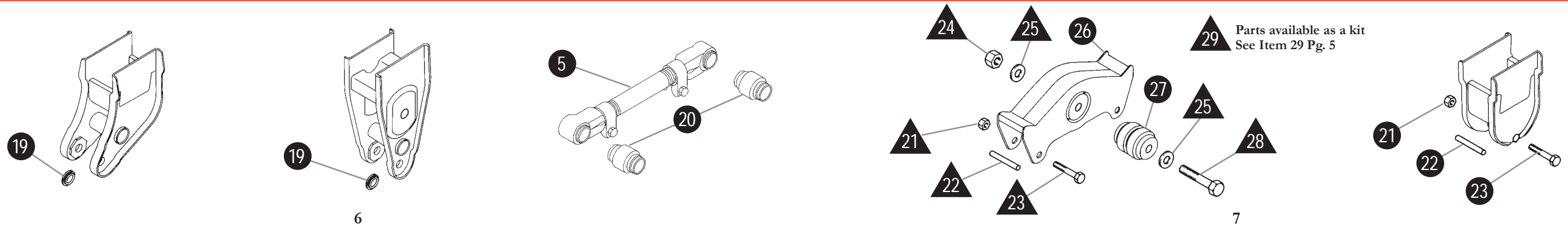
H-9700/CH-9700



* Str/mt = $3\frac{1}{2}''$ (89mm), Un/mt & Si/mt = $3\frac{7}{8}''$ (99mm), Fl/mt = $5\frac{1}{2}''$ (140mm)
 ** Ref. This dimension may vary with changes in springs, spring seat heights, etc.
 *** Recommended spring clearance



Replacement Parts



H-9700 and CH-9700

Chart C - U-Bolt

5" Round Axle											
U-Bolts											
7040 - See Below, Std. 7/8 Dia. x 3 Rd. x See Length Below											
16300 - See Below, Opt. 3/4 Dia. x 3 Rd. x See Length Below											
Seat	Single		Two		Three		Seven		Eight		Length
	Leaf	Length	Leaf	Spring*	Length	Spring**	Length	Spring	Length	Spring	
Height	Spring	Length	Spring*	Length	Spring**	Length	Spring	Length	Spring	Length	
3/4	-06	9 3/4	-07	10 1/4	-08	10 3/4	-10	11 3/4	-11	12 1/4	
1 1/4	-07	10 1/4	-08	10 3/4	-09	11 1/4	-11	12 1/4	-12	12 3/4	
1 3/4	-08	10 3/4	-09	11 1/4	-10	11 3/4	-12	12 3/4	-13	13 1/4	
2 1/4	-09	11 1/4	-10	11 3/4	-11	12 1/4	-13	13 1/4	-14	13 3/4	
2 3/4	-10	11 3/4	-11	12 1/4	-12	12 3/4	-14	13 3/4	-15	14 1/4	
3 1/4	-11	12 1/4	-12	12 3/4	-13	13 1/4	-15	14 1/4	-16	14 3/4	
3 3/4	-12	12 3/4	-13	13 1/4	-14	13 3/4	-16	14 3/4	-17	15 1/4	
4 1/4	-13	13 1/4	-14	13 3/4	-15	14 1/4	-17	15 1/4	-18	15 3/4	
4 3/4	-14	13 3/4	-15	14 1/4	-16	14 3/4	-18	15 3/4	-19	16 1/4	

5" x 5" Square Axle											
U-Bolts											
7040 - See Below, Std. 7/8 Dia. x 3 Rd. x See Length Below											
Seat	Single		Two		Three		Seven		Eight		Length
	Leaf	Length	Leaf	Spring*	Length	Spring**	Length	Spring	Length	Spring	
Height	Spring	Length	Spring*	Length	Spring**	Length	Spring	Length	Spring	Length	
3/4	-08	10 3/4	-09	11 1/4	-10	11 3/4	-12	12 3/4	-13	13 1/4	
1 1/4	-09	11 1/4	-10	11 3/4	-11	12 1/4	-13	13 1/4	-14	13 3/4	
1 3/4	-10	11 3/4	-11	12 1/4	-12	12 3/4	-14	13 3/4	-15	14 1/4	
2 1/4	-11	12 1/4	-12	12 3/4	-13	13 1/4	-15	14 1/4	-16	14 3/4	
2 3/4	-12	12 3/4	-13	13 1/4	-14	13 3/4	-16	14 3/4	-17	15 1/4	
3 1/4	-13	13 1/4	-14	13 3/4	-15	14 1/4	-17	15 1/4	-18	15 3/4	
3 3/4	-14	13 3/4	-15	14 1/4	-16	14 3/4	-18	15 3/4	-19	16 1/4	
4 1/4	-15	14 1/4	-16	14 3/4	-17	15 1/4	-19	16 1/4	-20	16 3/4	
4 3/4	-16	14 3/4	-17	15 1/4	-18	15 3/4	-20	16 3/4	-21	17 1/4	

4" x 6" Rectangle Axle											
U-Bolts											
7040 - See Below, Std. 7/8 Dia. x 3 Rd. x See Length Below											
Seat	Single		Two		Three		Seven		Eight		Length
	Leaf	Length	Leaf	Spring*	Length	Spring**	Length	Spring	Length	Spring	
Height	Spring	Length	Spring*	Length	Spring**	Length	Spring	Length	Spring	Length	
3/4	-10	11 3/4	-11	12 1/4	-12	12 3/4	-14	13 3/4	-15	14 1/4	
1 1/4	-11	12 1/4	-12	12 3/4	-13	13 1/4	-15	14 1/4	-16	14 3/4	
1 3/4	-12	12 3/4	-13	13 1/4	-14	13 3/4	-16	14 3/4	-17	15 1/4	
2 1/4	-13	13 1/4	-14	13 3/4	-15	14 1/4	-17	15 1/4	-18	15 3/4	
2 3/4	-14	13 3/4	-15	14 1/4	-16	14 3/4	-18	15 3/4	-19	16 1/4	
3 1/4	-15	14 1/4	-16	14 3/4	-17	15 1/4	-19	16 1/4	-20	16 3/4	
3 3/4	-16	14 3/4	-17	15 1/4	-18	15 3/4	-20	16 3/4	-21	17 1/4	
4 1/4	-17	15 1/4	-18	15 3/4	-19	16 1/4	-21	17 1/4	-22	17 3/4	
4 3/4	-18	15 3/4	-19	16 1/4	-20	16 3/4	-22	17 3/4	-23	18 1/4	

Chart D - Bottom Plate

Axle Size	Part No.
5" Rd. w/ 7/8" Dia. U-Bolts	71000
5" Rd. w/ 3/4" Dia. U-Bolts	16297-01
5" x 5" Square	7747-01
4" x 6" Rect.	7746-00

Chart E - No-Hop Option

5" Round Axle											
U-Bolts											
7040 - See Below, Std. 7/8 Dia. x 3 Rd. x See Length Below											
16300 - See Below, Opt. 3/4 Dia. x 3 Rd. x See Length Below											
Seat	Single		Two		Three		Seven		Eight		Length
	Leaf	Length	Leaf	Spring*	Length	Spring**	Length	Spring	Length	Spring	
Height	Spring	Length	Spring*	Length	Spring**	Length	Spring	Length	Spring	Length	
3/4	-06	9 3/4	-07	10 1/4	-08	10 3/4	-10	11 3/4	-11	12 1/4	
1 1/4	-07	10 1/4	-08	10 3/4	-09	11 1/4	-11	12 1/4	-12	12 3/4	
1 3/4	-08	10 3/4	-09	11 1/4	-10	11 3/4	-12	12 3/4	-13	13 1/4	
2 1/4	-09	11 1/4	-10	11 3/4	-11	12 1/4	-13	13 1/4	-14	13 3/4	

Axle Group				
Seat	Radius	Attach Fitting		
Height	Rod	(w/ Std. 7/8 Dia. U-Bolts)	(w/ Opt. 3/4 Dia. U-Bolts)	Seat
3/4	16398-06	10775-00	16308-01	22215-01
1 1/4	16398-06	10775-00	16308-01	22215-02
1 3/4	16398-06	10775-00	16308-01	22215-03
2 1/4	16398-06	10775-00	16308-01	22215-04

5" x 5" Square Axle											
U-Bolts											
7040 - See Below, Std. 7/8 Dia. x 3 Rd. x See Length Below											
Seat	Single		Two		Three		Seven		Eight		Length
	Leaf	Length	Leaf	Spring*	Length	Spring**	Length	Spring	Length	Spring	
Height	Spring	Length	Spring*	Length	Spring**	Length	Spring	Length	Spring	Length	
3/4	-08	10 3/4	-09	11 1/4	-10	11 3/4	-12	12 3/4	-13	13 1/4	
1 1/4	-09	11 1/4	-10	11 3/4	-11	12 1/4	-13	13 1/4	-14	13 3/4	
1 3/4	-10	11 3/4	-11	12 1/4	-12	12 3/4	-14	13 3/4	-15	14 1/4	
2 1/4	-11	12 1/4	-12	12 3/4	-13	13 1/4	-15	14 1/4	-16	14 3/4	

Axle Group			
Seat Height	Radius Rod	Attach Fitting	Seat
3/4	16398-04	7738-01	22226-01
1 1/4	16398-04	7738-01	22226-02
1 3/4	16398-04	7738-01	22226-03
2 1/4	16398-04	7738-01	22226-04

4" x 6" Rectangle Axle											
U-Bolts											
7040 - See Below, Std. 7/8 Dia. x 3 Rd. x See Length Below											
Seat	Single		Two		Three		Seven		Eight		Length
	Leaf	Length	Leaf	Spring*	Length	Spring**	Length	Spring	Length	Spring	
Height	Spring	Length	Spring*	Length	Spring**	Length	Spring	Length	Spring	Length	
3/4	-10	11 3/4	-11	12 1/4	-12	12 3/4	-14	13 3/4	-15	14 1/4	
1 1/4	-11	12 1/4	-12	12 3/4	-13	13 1/4	-15	14 1/4	-16	14 3/4	
1 3/4	-12	12 3/4	-13	13 1/4	-14	13 3/4	-16	14 3/4	-17	15 1/4	
2 1/4	-13	13 1/4	-14	13 3/4	-15	14 1/4	-17	15 1/4	-18	15 3/4	

Axle Group			
Seat Height	Radius Rod	Attach Fitting	Seat
3/4	16398-04	7738-00	22228-01
1 1/4	16398-04	7738-00	22228-02
1 3/4	16398-04	7738-00	22228-03
2 1/4	16398-04	7738-00	22228-04

* When using the 16710 -01 2-stage spring, use the same length U-bolt as used with 365-00 and 365-01 springs.

** When using 365-00, 365-01 springs or 34-00 Hi-nuts, use 1/2" longer U-bolts.

H-9700 and CH-9700 US (Underslung)

Bill of Materials

Item	Part No.	Quantity		Description
		Single Axle	Tandem Axle	
1	See Chart A, Below	2	2	Front Spring Hanger
2	See Chart A, Below	0	2	Center Rocker/Rocker Hanger Assembly
3	See Chart A, Below	2	2	Rear Spring Hanger Assembly
4	719-02	4	8	Radius Rod Bolt - Hex Bolt - 1 - 14 UNS x 5"
5	16398-04	1	2	Radius Rod w/ Bushing - 19.25 LG
6	10562-00	4	8	Flange Locknut - 1 - 14 UNS, GRF, Phosphate & Oil
7	See Chart F, Page 12	4	8	U-Bolt - Standard 7/8" U-Bolt
8	See Chart G, Page 12	2	4	Spring Seat - 5" Round (Shown)
9	17350-02	2	4	Galvanized Liner ①
10	See Spring Appendix	2	4	Spring Assembly - Standard 3-Leaf (Shown)
11	706-01	2	4	Bottom Plate Att. - Cast
12	35-00	8	16	Washer - PL, 15/16 ID x 1 3/4 OD (For Std. 7/8" U-Bolt)
13	34-04	8	16	Hex Nut - 7/8" - 14 UNF (For Std. 7/8" U-Bolt)
14	715-00	1	2	Non-Adj. Radius Rod w/ Rubber Bushing
15	7717-01	2 per Hanger		Washer Bushing - Replaces Sideplate Washer 10561-00 on Fabricated (H) Front and Center Hangers Only
16	722-00	2 per Rad. Rod		Radius Rod Bushing Only - 3" LG
17	37-03	2 per Rocker 1 per Rear Hgr.		Hex Lock Nut - 5/8" - 18 UNF, GRB (Shipped loose, not part of center rocker & hanger assy. However it is part of the rear hanger assy.)
18	756-00	2 per Rocker 1 per Rear Hgr.		Sleeve Spacer - 3/4 OD x 18 GA x 3 1/4 LG (Shipped loose, not part of center rocker & hanger assy. However it is part of the rear hanger assy.)
19	759-00	2 per Rocker 1 per Rear Hgr.		Hex Bolt - 5/8" - 18 UNF x 4 1/2 LG, GR2 (Shipped loose, not part of center rocker & hanger assy. However it is part of the rear hanger assy.)
20	11154-00	1 per Rocker		Hex Lock Nut - 1 1/8" - 7 UNC, GR5
21	837-00	2 per Rocker		Washer - 1/8" x 1 1/4 ID x 2 1/4 OD
22	16158-01 or 17784-01	0	2	Fabricated Rocker Assembly w/ Rubber Bushing (Shown)
		0	2	Cast Rocker Assembly w/ Rubber Bushing (Not Shown)
23	18723-01	1 per Rocker		Rocker Bushing Only - Rubber
24	16150-01	1 per Rocker		Hex Cap Screw - 1 1/8" - 7 UNC x 6.62" LG, GR5
25	16353-01	1 per Rocker		Rocker Replacement Bolt Kit Consisting of 1 ea. 16150-01, 2 ea. 837-00, 1 ea. 11154-00, 2 ea. 759-00, 2 ea. 756-00 and 2 ea. 37-03

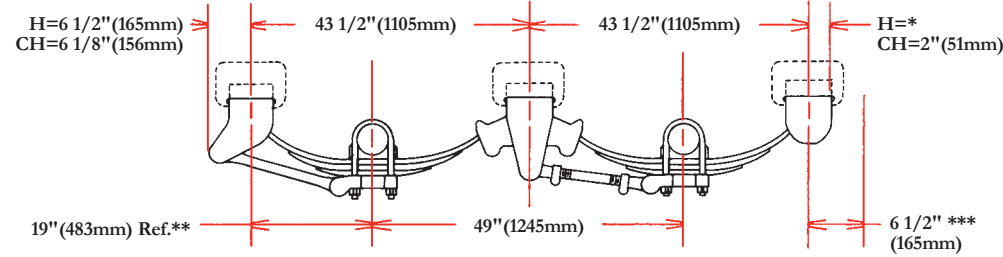
Chart A - Hanger: Fabricated (H) and Cast (CH) Hangers

Description	Part No.	Str/mt	Un/mt	Hanger Configuration			
				Un/mt (I-beam)	Si/mt	Fl/mt/wo	Fl/mt/bo
Front Hgr., Fab. (H)	7701-	-01	20728-01	16481-01	L 20729-01 R 20730-01	L-05 R-06	L-07 R-08
Front Hgr., Cast (CH)		702-01	L 16291-03 R 16291-04	NA	L 16291-03 R 16291-04	L 702-09 R 702-10	L 702-11 R 702-12
Rocker & Hgr. Assy., Fab. (H)	16319-	-01	-02	-02	-04	-08	-07
Rocker & Hgr. Assy., Cast (CH)	16319-	-51	-52	-52	-52	-58	-57
Rocker Hgr. Only, Fab. (H)		16169-01	16171-01	16171-01	16175-01	16179-01	16178-01
Rocker Hgr. Only, Cast (CH)		16196-03	16197-03	16197-03	16197-03	16199-05	16199-03
Rear Hgr. Assy., Fab. (H)	7703-	-01	20732-01	16483-01	L 20733-01 R 20734-01	L-05 R-06	L-07 R-08
Rear Hgr. Assy., Cast (CH)		712-01	L 16293-01 R 16293-02	NA	L 16293-01 R 16293-02	L 712-09 R 712-10	L 712-11 R 712-12

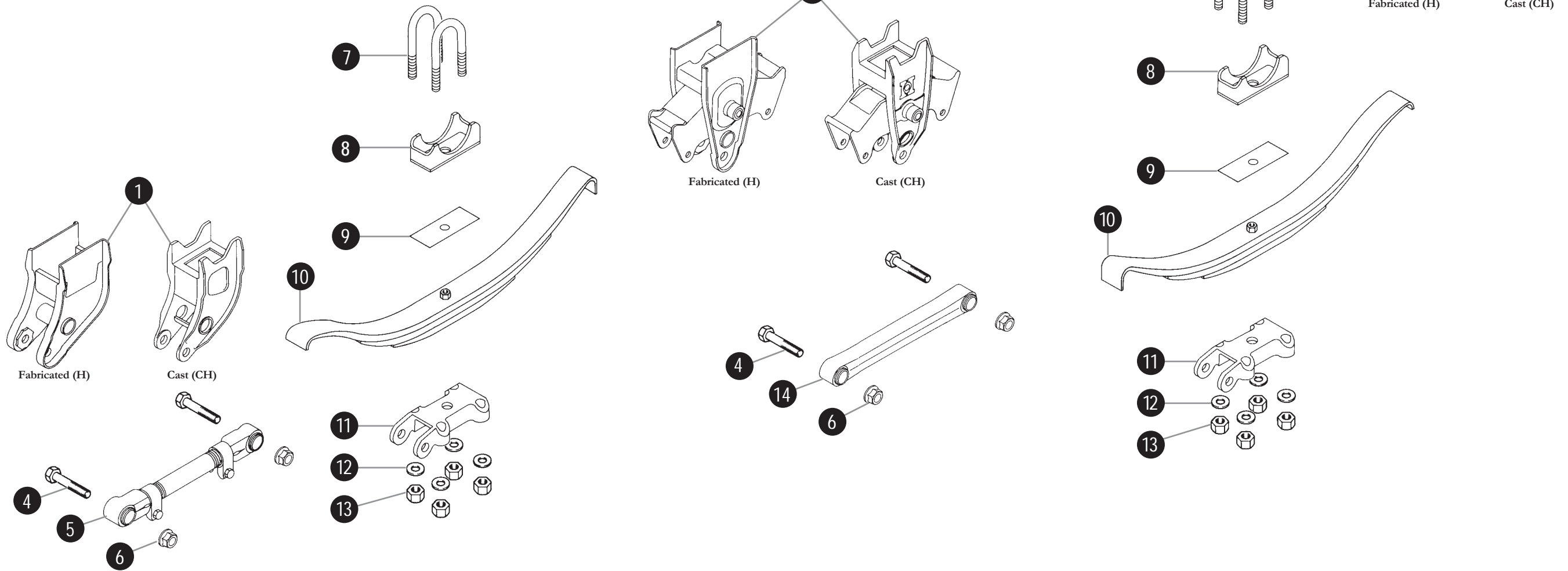
① Galvanized liners are required on the tension (top) side of each plate when taper (i.e., single, two and three leaf) springs are utilized. One spring liner per spring (for top leaf) will be shipped loose from Hutchens or spring vendor. Liners are not required on flat plate (seven or eight leaf) springs.



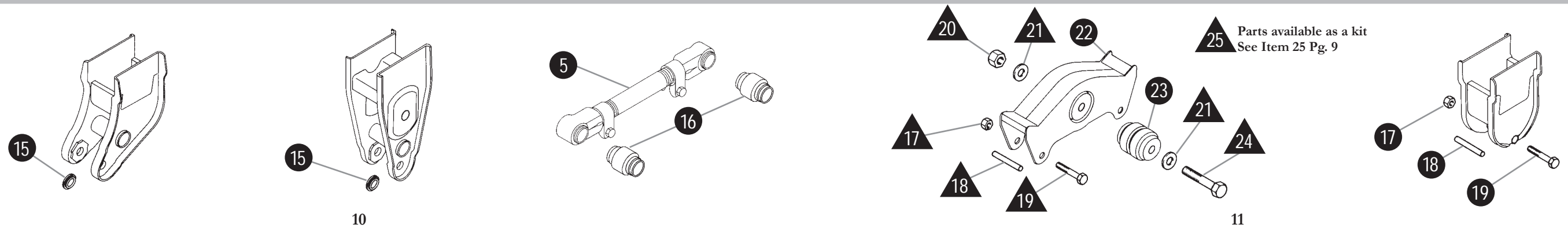
H-9700/CH-9700 US



* Str/mt = 3 1/2" (89mm), Un/mt & Si/mt = 3 7/8" (99mm), Fl/mt = 5 1/2" (140mm)
 ** Ref: This dimension may vary with changes in springs, spring seat heights, etc.
 *** Recommended spring clearance



Replacement Parts



H-9700 and CH-9700 US

Chart F - U-Bolt

5" Round Axle										
U-Bolts										
7816 – See Below, Std. 7/8 Dia. x 5 Rd. x See Length Below										
Seat Height	Single Leaf Spring	Length	Two Leaf Spring*	Length	Three Leaf Spring**	Length	Seven Leaf Spring	Length	Eight Leaf Spring	Length
3/4	-08	10 3/4	-09	11 1/4	-10	11 3/4	-12	12 3/4	-13	13 1/4
1 1/4	-09	11 1/4	-10	11 3/4	-11	12 1/4	-13	13 1/4	-14	13 3/4
1 3/4	-10	11 3/4	-11	12 1/4	-12	12 3/4	-14	13 3/4	-15	14 1/4
2 1/4	-11	12 1/4	-12	12 3/4	-13	13 1/4	-15	14 1/4	-16	14 3/4

5" x 5" Square Axle										
U-Bolts										
7840 – See Below, Std. 7/8 Dia. x 5 Sq. x See Length Below										
Seat Height	Single Leaf Spring	Length	Two Leaf Spring*	Length	Three Leaf Spring**	Length	Seven Leaf Spring	Length	Eight Leaf Spring	Length
3/4	-04	10 3/4	-05	11 1/4	-06	11 3/4	-08	12 3/4	-09	13 1/4
1 1/4	-05	11 1/4	-06	11 3/4	-07	12 1/4	-09	13 1/4	-10	13 3/4
1 3/4	-06	11 3/4	-07	12 1/4	-08	12 3/4	-10	13 3/4	-11	14 1/4
2 1/4	-07	12 1/4	-08	12 3/4	-09	13 1/4	-11	14 1/4	-12	14 3/4

Chart G - Spring Seat

Seat Height		3/4"	1 1/4"	1 3/4"	2 1/4"	2 3/4"	3 1/4"	3 3/4"	4 1/4"	4 3/4"
5" Round	22215-	-01	-02	-03	-04	NR	—	—	—	—
5" x 5" Square	22226-	-01	-02	-03	-04	NR	—	—	—	—

* When using the 16710-01 2-stage spring, use the same length U-bolt as used with 365-00 and 365-01 springs.

** When using 365-00, 365-01 springs or 34-00 Hi-nuts, use 1/2" longer U-bolts.

H-9700 and CH-9700 w/ Inv. U-Bolts

Bill of Materials

Item	Part No.	Quantity		Description
		Single Axle	Tandem Axle	
1	See Chart A, Below	2	2	Front Spring Hanger
2	See Chart A, Below	0	2	Center Rocker/Rocker Hanger Assembly
3	See Chart A, Below	2	2	Rear Spring Hanger Assembly
4	719-02	4	8	Radius Rod Bolt – Hex Bolt - 1 - 14 UNS x 5"
5	16398-04	1	2	Radius Rod w/ Bushing – 19.25 LG
6	10562-00	4	8	Flange Locknut – 1 - 14 UNS, GRF, Phosphate & Oil
7	34-04 or 16303-01	8 8	16 16	Hex Nut – 7/8" - 14 UNF (For Std. 7/8" U-Bolt Shown) Hex Nut – 3/4" - 16 UNF (For Optional 3/4" U-Bolt)
8	35-00 or 817-00	8 8	16 16	Washer – PL, 15/16 ID x 1 3/4 OD (For Std. 7/8" U-Bolt Shown) Washer – 1/8" x 13/16 ID x 1 1/2 OD (For Optional 3/4" U-Bolt)
9	See Chart H, Page 16	2	4	Top Plate
10	17350-02	2	4	Galvanized Liner ①
11	See Spring Appendix	2	4	Spring Assembly – Standard 3-Leaf (Shown)
12	See Chart B, Page 16	2	4	Spring Seat – 5" Round (Shown)
13	See Chart J, Page 16	4	8	U-Bolt – Standard 7/8" U-Bolt (Shown)
14	715-00	1	2	Non-Adj. Radius Rod w/ Rubber Bushing
15	7717-01	2 per Hanger		Washer Bushing – Replaces Sideplate Washer 10561-00 on Fabricated (H) Front and Center Hangers Only
16	722-00	2 per Rad. Rod		Radius Rod Bushing Only – 3" LG
17	37-03	2 per Rocker 1 per Rear Hgr.		Hex Lock Nut – 5/8" - 18 UNF, GRB (Shipped loose, not part of center rocker & hanger assy. However it is part of the rear hanger assy.)
18	756-00	2 per Rocker 1 per Rear Hgr.		Sleeve Spacer – 3/4 OD x 18 GA x 3 1/4 LG (Shipped loose, not part of center rocker & hanger assy. However it is part of the rear hanger assy.)
19	759-00	2 per Rocker 1 per Rear Hgr.		Hex Bolt – 5/8" - 18 UNF x 4 1/2 LG, GR2 (Shipped loose, not part of center rocker & hanger assy. However it is part of the rear hanger assy.)
20	11154-00	1 per Rocker		Hex Lock Nut – 1 1/8" - 7 UNC, GR5
21	837-00	2 per Rocker		Washer – 1/8" x 1 1/4 ID x 2 1/4 OD
22	16158-01 or 17784-01	0 0	2 2	Fabricated Rocker Assembly w/ Rubber Bushing (Shown) Cast Rocker Assembly w/ Rubber Bushing (Not Shown)
23	18723-01	1 per Rocker		Rocker Bushing Only – Rubber
24	16150-01	1 per Rocker		Hex Cap Screw – 1 1/8" - 7 UNC x 6.62" LG, GR5
25	16353-01	1 per Rocker		Rocker Replacement Bolt Kit Consisting of 1 ea. 16150-01, 2 ea. 837-00, 1 ea. 11154-00, 2 ea. 759-00, 2 ea. 756-00 and 2 ea. 37-03

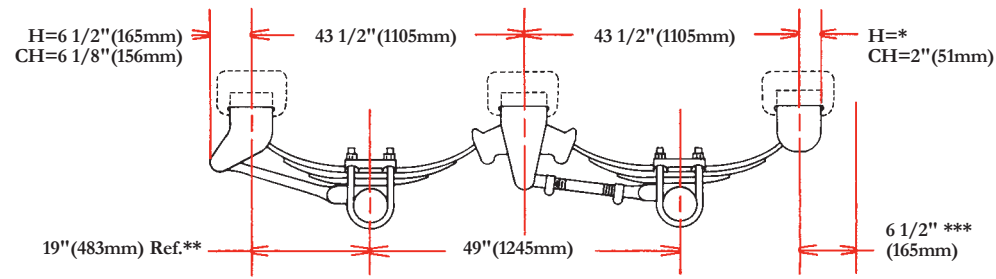
Chart A – Hanger: Fabricated (H) and Cast (CH) Hangers

Description	Part No.	Str/mt	Un/mt	Un/mt (I-beam)	Hanger Configuration			
					Si/mt	Fl/mt/wo	Fl/mt/bo	
Front Hgr., Fab. (H)	7701-	-01	20728-01	16481-01	L 20729-01	R 20730-01	L-05 R-06	L-07 R-08
Front Hgr., Cast (CH)		702-01	L 16291-03 R 16291-04	NA	L 16291-03 R 16291-04		L 702-09 R 702-10	L 702-11 R 702-12
Rocker & Hgr. Assy., Fab. (H)	16319-	-01	-02	-02	-04		-08	-07
Rocker & Hgr. Assy., Cast (CH)	16319-	-51	-52	-52	-52		-58	-57
Rocker Hgr. Only, Fab. (H)		16169-01	16171-01	16171-01	16175-01		16179-01	16178-01
Rocker Hgr. Only, Cast (CH)		16196-03	16197-03	16197-03	16197-03		16199-05	16199-03
Rear Hgr. Assy., Fab. (H)	7703-	-01	20732-01	16483-01	L 20733-01	R 20734-01	L-05 R-06	L-07 R-08
Rear Hgr. Assy., Cast (CH)		712-01	L 16293-01 R 16293-02	NA	L 16293-01 R 16293-02		L 712-09 R 712-10	L 712-11 R 712-12

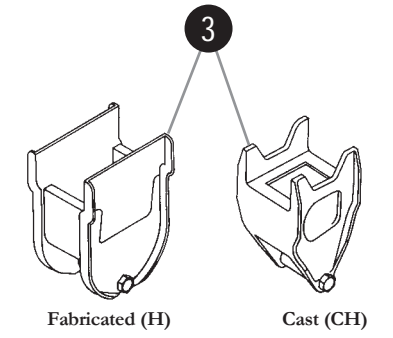
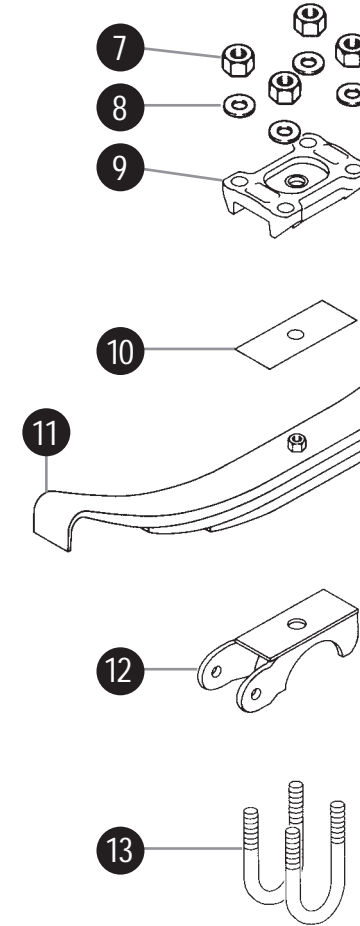
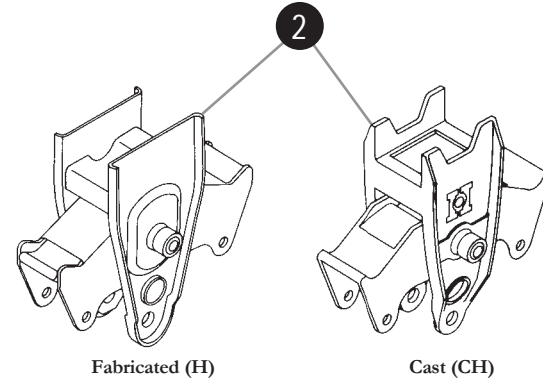
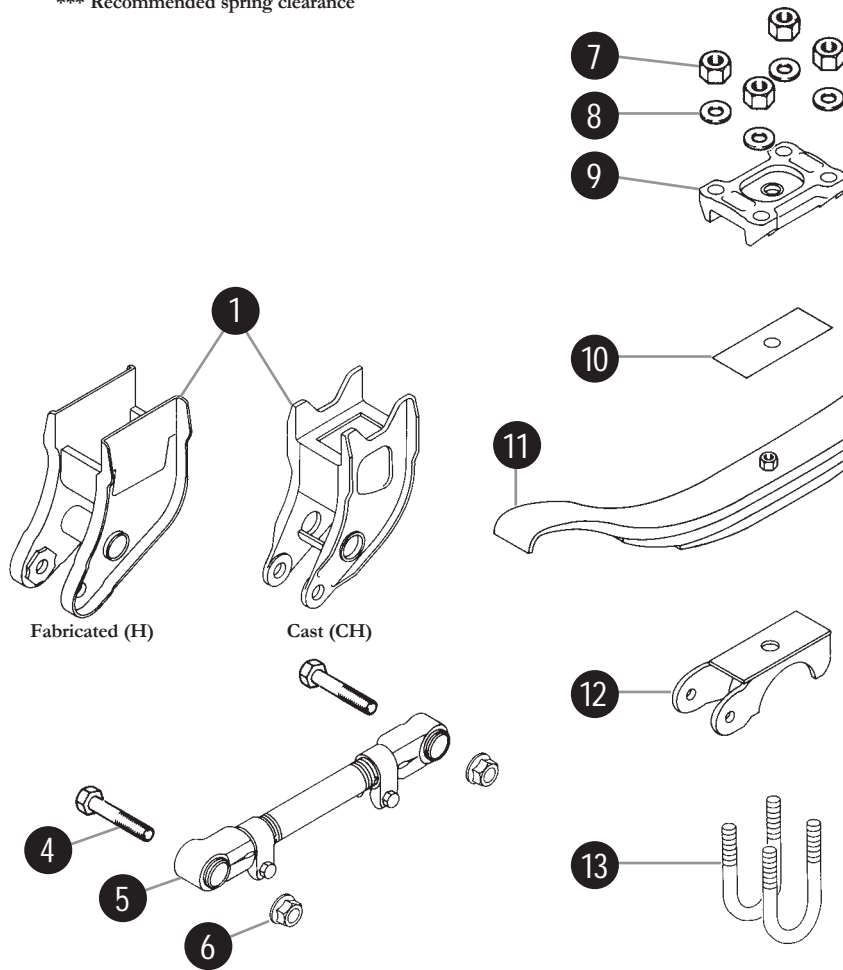
① Galvanized liners are required on the tension (top) side of each plate when taper (i.e., single, two and three leaf) springs are utilized. One spring liner per spring (for top leaf) will be shipped loose from Hutchens or spring vendor. Liners are not required on flat plate (seven or eight leaf) springs.



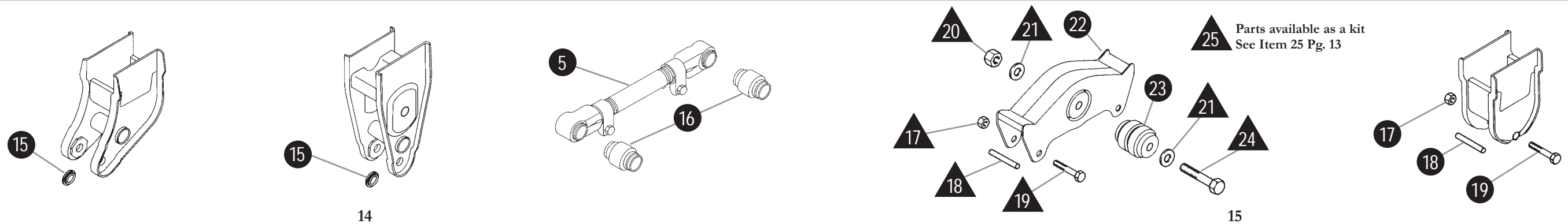
H-9700/CH-9700 w/ Inv. U-Bolts



* Str/mt = 3 1/2" (89mm), Un/mt & Si/mt = 3 7/8" (99mm), Fl/mt = 5 1/2" (140mm)
 ** Ref: This dimension may vary with changes in springs, spring seat heights, etc.
 *** Recommended spring clearance



Replacement Parts



H-9700 and CH-9700 w/ Inv. U-Bolts

Chart B - Spring Seat

Seat Height		3/4"	1 1/4"	1 3/4"	2 1/4"	2 3/4"	3 1/4"	3 3/4"	4 1/4"	4 3/4"
5" Round	19360-	-01	-02	-03	-04	-05	-06	-07	-08	-09
5" x 5" Square	19365-	-01	-02	-03	-04	-05	-06	-07	-08	-09

Chart H - Top Plate

Axle Size	Part No.
5" Round	9202-00
5" x 5" Square	9202-00

Chart J - U-Bolt

5" Round Axle										
U-Bolts										
7816 – See Below, Std. 7/8 Dia. x 5 Rd. x See Length Below										
Seat Height	Single Leaf Spring	Length	Two Leaf Spring*	Length	Three Leaf Spring**	Length	Seven Leaf Spring	Length	Eight Leaf Spring	Length
3/4	-05	9 1/4	-06	9 3/4	-07	10 1/4	-09	11 1/4	-10	11 3/4
1 1/4	-06	9 3/4	-07	10 1/4	-08	10 3/4	-10	11 3/4	-11	12 1/4
1 3/4	-07	10 1/4	-08	10 3/4	-09	11 1/4	-11	12 1/4	-12	12 3/4
2 1/4	-08	10 3/4	-09	11 1/4	-10	11 3/4	-12	12 3/4	-13	13 1/4
2 3/4	-09	11 1/4	-10	11 3/4	-11	12 1/4	-13	13 1/4	-14	13 3/4
3 1/4	-10	11 3/4	-11	12 1/4	-12	12 3/4	-14	13 3/4	-15	14 1/4
3 3/4	-11	12 1/4	-12	12 3/4	-13	13 1/4	-15	14 1/4	-16	14 3/4
4 1/4	-12	12 3/4	-13	13 1/4	-14	13 3/4	-16	14 3/4	-17	15 1/4
4 3/4	-13	13 1/4	-14	13 3/4	-15	14 1/4	-17	15 1/4	-18	15 3/4

5" x 5" Square Axle										
U-Bolts										
7840 – See Below, Std. 7/8 Dia. x 5 Sq. x See Length Below										
Seat Height	Single Leaf Spring	Length	Two Leaf Spring*	Length	Three Leaf Spring**	Length	Seven Leaf Spring	Length	Eight Leaf Spring	Length
3/4	-01	9 1/4	-02	9 3/4	-03	10 1/4	-05	11 1/4	-06	11 3/4
1 1/4	-02	9 3/4	-03	10 1/4	-04	10 3/4	-06	11 3/4	-07	12 1/4
1 3/4	-03	10 1/4	-04	10 3/4	-05	11 1/4	-07	12 1/4	-08	12 3/4
2 1/4	-04	10 3/4	-05	11 1/4	-06	11 3/4	-08	12 3/4	-09	13 1/4
2 3/4	-05	11 1/4	-06	11 3/4	-07	12 1/4	-09	13 1/4	-10	13 3/4
3 1/4	-06	11 3/4	-07	12 1/4	-08	12 3/4	-10	13 3/4	-11	14 1/4
3 3/4	-07	12 1/4	-08	12 3/4	-09	13 1/4	-11	14 1/4	-12	14 3/4
4 1/4	-08	12 3/4	-09	13 1/4	-10	13 3/4	-12	14 3/4	-13	15 1/4
4 3/4	-09	13 1/4	-10	13 3/4	-11	14 1/4	-13	15 1/4	-14	15 3/4

* When using the 16710-01 2-stage spring, use the same length U-bolt as used with 365-00 and 365-01 springs.

** When using 365-00, 365-01 springs or 34-00 Hi-nuts, use 1/2" longer U-bolts.

Optional 42 1/2" and 44" Axle Centers

42 1/2" (1080mm) Axle Centers (A/C)

On the Overslung, Underslung and Inverted U-Bolts, H and CH 9700 Series suspensions with 42 1/2" A/C, the only parts not interchangeable with the standard 49" A/C models are as follows:

Bill of Materials

Item	Part No.	Quantity		Description
		Tandem		
1	16398-01	2		Adj. Radius Rod w/ Bushing - 14.00 LG
2	See Following Charts	8		U-Bolt
3	See Following Charts	4		Spring Assembly
5	16398-02	2		Adj. Radius Rod w/ Bushing - 16.00 LG

Note: On the 42 1/2" A/C models all radius rods are adjustable.

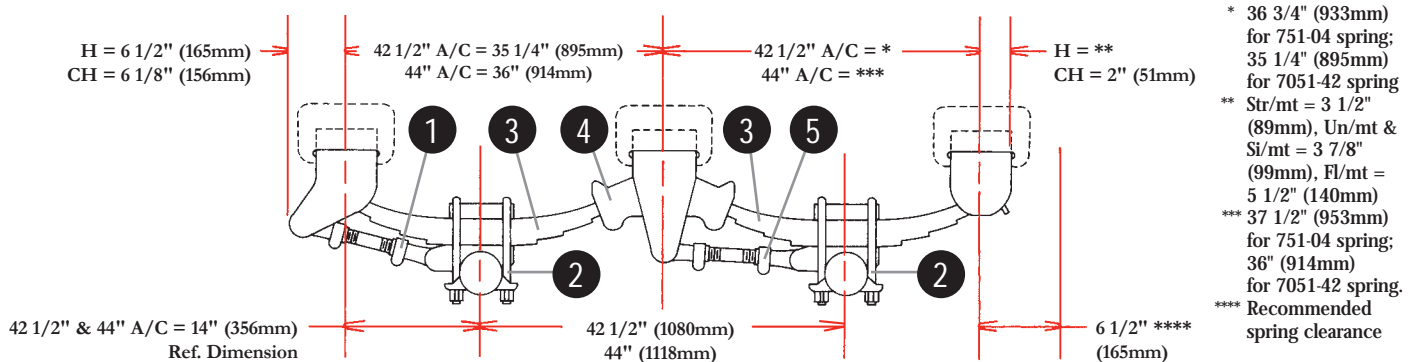
44" (1118mm) Axle Centers (A/C)

On the Overslung, Underslung and Inverted U-Bolts, H and CH 9700 Series suspensions with 44" A/C, the only parts not interchangeable with the standard 49" A/C models are as follows:

Bill of Materials

Item	Part No.	Quantity		Description
		Tandem		
1	16398-01	2		Adj. Radius Rod w/ Bushing - 14.00 LG
2	See Following Charts	8		U-Bolt
3	See Following Charts	4		Spring Assembly
4	24711-01	2		Rocker w/ Rubber Bushing, Fabricated
5	16398-03	2		Adj. Radius Rod w/ Bushing - 16.62 LG

9700 Overslung (42 1/2" (1080mm) & 44" (1118mm))

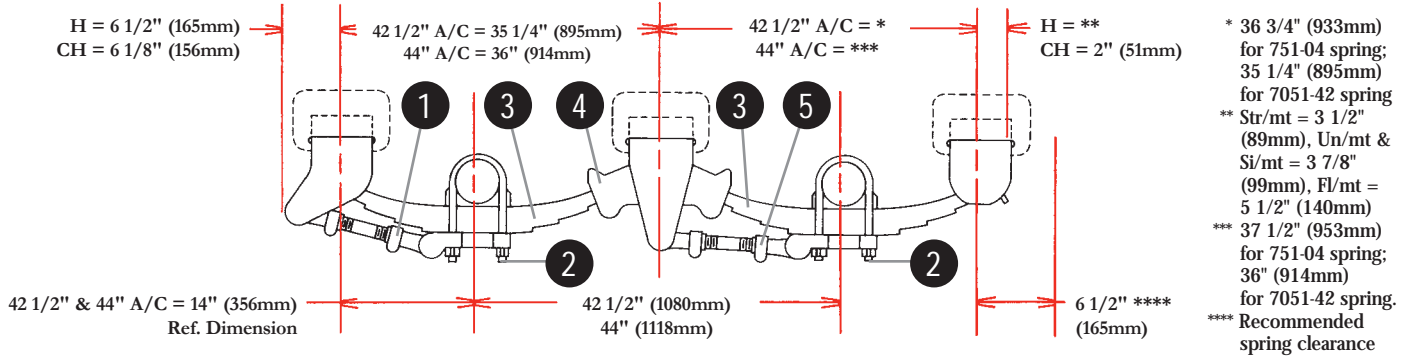


Mounting Height (See ①) (Inches (mm))	U-Bolt Part No. (See ②)	Spring Assembly	Spring Seat Height (inches)									
			3/4	1 1/4	1 3/4	2 1/4	2 3/4	3 1/4	3 3/4	4 1/4	4 3/4	
5"	Round	751-04 (6 leaf)	14 1/8 (359)	14 5/8 (372)	15 1/8 (384)	15 5/8 (397)	16 1/8 (410)	16 5/8 (422)	17 1/8 (435)	17 5/8 (448)	18 1/8 (461)	
		7051-42 (single leaf)	-09	-10	-11	-12	-13	-14	-15	-16	-17	
	Square	751-04 (6 leaf)	13 1/4 (337)	13 3/4 (349)	14 1/4 (362)	14 3/4 (375)	15 1/4 (387)	15 3/4 (400)	16 1/4 (413)	16 3/4 (425)	17 1/4 (438)	
		7051-42 (single leaf)	-06	-07	-08	-09	-10	-11	-12	-13	-14	
4" x 6"	Round	751-04 (6 leaf)	14 1/8 (359)	14 5/8 (372)	15 1/8 (384)	15 5/8 (397)	16 1/8 (410)	16 5/8 (422)	17 1/8 (435)	17 5/8 (448)	18 1/8 (461)	
		7051-42 (single leaf)	-11	-12	-13	-14	-15	-16	-17	-18	-19	
	Rect.	751-04 (6 leaf)	13 1/4 (337)	13 3/4 (349)	14 1/4 (362)	14 3/4 (375)	15 1/4 (387)	15 3/4 (400)	16 1/4 (413)	16 3/4 (425)	17 1/4 (438)	
		7051-42 (single leaf)	-08	-09	-10	-11	-12	-13	-14	-15	-16	
4" x 6"	Rect.	751-04 (6 leaf)	14 5/8 (372)	15 1/8 (384)	15 5/8 (397)	16 1/8 (410)	16 5/8 (422)	17 1/8 (435)	17 5/8 (448)	18 1/8 (461)	18 5/8 (473)	
		7051-42 (single leaf)	-13	-14	-15	-16	-17	-18	-19	-20	-21	
4" x 6"	Rect.	751-04 (6 leaf)	13 3/4 (349)	14 1/4 (362)	14 3/4 (375)	15 1/4 (387)	15 3/4 (400)	16 1/4 (413)	16 3/4 (425)	17 1/4 (438)	17 3/4 (451)	
		7051-42 (single leaf)	-10	-11	-12	-13	-14	-15	-16	-17	-18	

① For correct mounting height on the 44" A/C models, subtract 1/4" (6mm) from the mounting height shown. All other chart material remains the same.

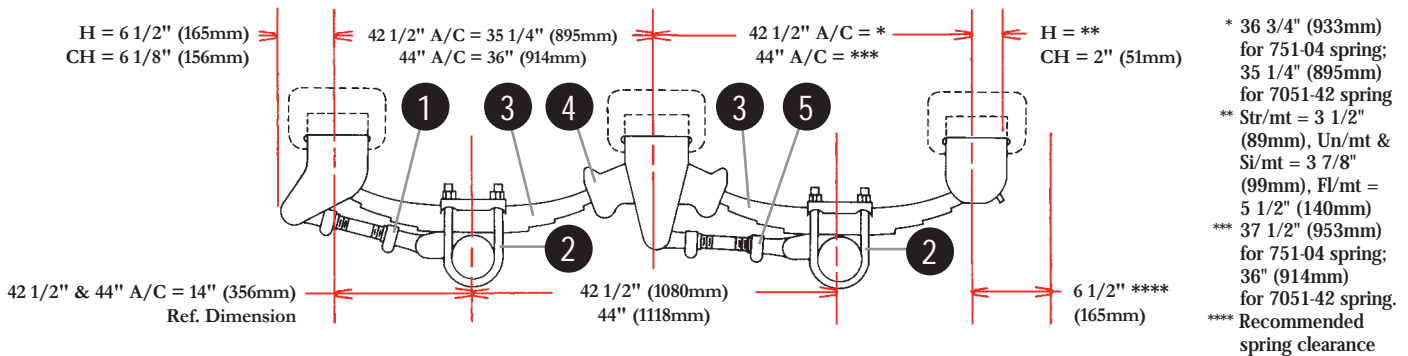
② Whichever U-bolt you choose (the Std. 7/8" or the Opt. 3/4" Dia.) be sure that you are using the correct size U-bolt nuts, washers and bottom plates.

9700 Underslung (42 1/2" (1080mm) & 44" (1118mm))



Mounting Height (See ①) (Inches (mm))	U-Bolt Part No.	Axle Size	Spring Assembly	Spring Seat Height (inches)					
				3/4	1 1/4	1 3/4	2 1/4	2 1/4	
5"	Round	751-04 (6 leaf)	751-04	4 1/2 (108)	4 (102)	3 1/2 (89)	3 (76)		
			7816-11 7816-12 7816-13 7816-14						
		7051-42 (single leaf)	7051-42	5 1/4 (133)	4 3/4 (121)	4 1/4 (108)	3 3/4 (95)		
			7816-08 7816-09 7816-10 7816-11						
		5" x 5"	Square	751-04 (6 leaf)	751-04	4 1/2 (108)	4 (102)	3 1/2 (89)	3 (76)
					7840-07 7840-08 7840-09 7840-10				
7051-42 (single leaf)	7840-04 7840-05 7840-06 7840-07								

9700 w/ Inv. U-Bolts (42 1/2" (1080mm) & 44" (1118mm))



Mounting Height (See ①) (Inches (mm))	U-Bolt Part No.	Axle Size	Spring Assembly	Spring Seat Height (inches)										
				3/4	1 1/4	1 3/4	2 1/4	2 3/4	3 1/4	3 3/4	4 1/4	4 3/4		
5"	Round	751-04 (6 leaf)	751-04	14 1/8 (359)	14 5/8 (372)	15 1/8 (384)	15 5/8 (397)	16 1/8 (410)	16 5/8 (422)	17 1/8 (435)	17 5/8 (448)	18 1/8 (461)		
			7816-08 7816-09 7816-10 7816-11 7816-12 7816-13 7816-14 7816-15 7816-16											
		7051-42 (single leaf)	7051-42	13 1/4 (337)	13 3/4 (349)	14 1/4 (362)	14 3/4 (375)	15 1/4 (387)	15 3/4 (400)	16 1/4 (413)	16 3/4 (425)	17 1/4 (438)		
			7816-05 7816-06 7816-07 7816-08 7816-09 7816-10 7816-11 7816-12 7816-13											
		5" x 5"	Square	751-04 (6 leaf)	751-04	14 1/8 (359)	14 5/8 (372)	15 1/8 (384)	15 5/8 (397)	16 1/8 (410)	16 5/8 (422)	17 1/8 (435)	17 5/8 (448)	18 1/8 (461)
					7840-04 7840-05 7840-06 7840-07 7840-08 7840-09 7840-10 7840-11 7840-12									
7051-42 (single leaf)	7840-01 7840-02 7840-03 7840-04 7840-05 7840-06 7840-07 7840-08 7840-09													

① For correct mounting height on the 44" A/C models, subtract 1/4" (6mm) from the mounting height shown. All other chart material remains the same.

Numerical Listing of Parts

Part No.	Description	Pg. #	Part No.	Description	Pg. #
34-00	Hex Nut – Hi, 7/8" - 14 UNF	8, 12, 16	7816-05	U-Bolt – 7/8 Dia. x 5" Round x 9 1/4 LG	16, 18
34-04	Hex Nut – 7/8" - 14 UNF	5, 9, 13	7816-06	U-Bolt – 7/8 Dia. x 5" Round x 9 3/4 LG	16, 18
35-00	Washer – PL, 15/16 ID x 1 3/4 OD	5, 9, 13	7816-07	U-Bolt – 7/8 Dia. x 5" Round x 10 1/4 LG	16, 18
37-03	Hex Locknut – 5/8" - 18 UNF	5, 9, 13	7816-08	U-Bolt – 7/8 Dia. x 5" Round x 10 3/4 LG	12, 16, 18
324-01	Spring Assembly – 2 Leaf, High Arch	4, Spring Appendix	7816-09	U-Bolt – 7/8 Dia. x 5" Round x 11 1/4 LG	12, 16, 18
325-01	Spring Assembly – 2 Leaf, Medium Arch	4, Spring Appendix	7816-10	U-Bolt – 7/8 Dia. x 5" Round x 11 3/4 LG	12, 16, 18
326-01	Spring Assembly – 2 Leaf, Low Arch	4, Spring Appendix	7816-11	U-Bolt – 7/8 Dia. x 5" Round x 12 1/4 LG	12, 16, 18
354-00	Spring Assembly – 3 Leaf, High Arch	4, Spring Appendix	7816-12	U-Bolt – 7/8 Dia. x 5" Round x 12 3/4 LG	12, 16, 18
355-00	Spring Assembly – 3 Leaf, Medium Arch	4, Spring Appendix	7816-13	U-Bolt – 7/8 Dia. x 5" Round x 13 1/4 LG	12, 16, 18
356-00	Spring Assembly – 3 Leaf, Low Arch	4, Spring Appendix	7816-14	U-Bolt – 7/8 Dia. x 5" Round x 13 3/4 LG	12, 16, 18
363-00	Spring Assembly – 1 Leaf, Low Arch	4, Spring Appendix	7816-15	U-Bolt – 7/8 Dia. x 5" Round x 14 1/4 LG	12, 16, 18
365-00	Spring Assembly – 3 Leaf, High Arch H.D.	4, Spring Appendix	7816-16	U-Bolt – 7/8 Dia. x 5" Round x 14 3/4 LG	12, 16, 18
365-01	Spring Assembly – 3 Leaf, Low Arch H.D.	4, Spring Appendix	7816-17	U-Bolt – 7/8 Dia. x 5" Round x 15 1/4 LG	16
702-01	Front Spring Hanger – Cast, Str/mt	5, 9, 13	7816-18	U-Bolt – 7/8 Dia. x 5" Round x 15 3/4 LG	16
702-09	Front Spring Hanger – Cast, Fl/mt/wo, Left	5, 9, 13	7840-01	U-Bolt – 7/8 Dia. x 5" Square x 9 1/4 LG	16, 18
702-10	Front Spring Hanger – Cast, Fl/mt/wo, Right	5, 9, 13	7840-02	U-Bolt – 7/8 Dia. x 5" Square x 9 3/4 LG	16, 18
702-11	Front Spring Hanger – Cast, Fl/mt/bo, Left	5, 9, 13	7840-03	U-Bolt – 7/8 Dia. x 5" Square x 10 1/4 LG	16, 18
702-12	Front Spring Hanger – Cast, Fl/mt/bo, Right	5, 9, 13	7840-04	U-Bolt – 7/8 Dia. x 5" Square x 10 3/4 LG	12, 16, 18
706-01	Bottom Plate – Att., Cast	9	7840-05	U-Bolt – 7/8 Dia. x 5" Square x 11 1/4 LG	12, 16, 18
710-00	Bottom Plate – U-Bolt, 5" Round	8	7840-06	U-Bolt – 7/8 Dia. x 5" Square x 11 3/4 LG	12, 16, 18
712-01	Rear Spring Hanger – Cast, Str/mt	5, 9, 13	7840-07	U-Bolt – 7/8 Dia. x 5" Square x 12 1/4 LG	12, 16, 18
712-09	Rear Spring Hanger – Cast, Fl/mt/wo, Left	5, 9, 13	7840-08	U-Bolt – 7/8 Dia. x 5" Square x 12 3/4 LG	12, 16, 18
712-10	Rear Spring Hanger – Cast, Fl/mt/wo, Right	5, 9, 13	7840-09	U-Bolt – 7/8 Dia. x 5" Square x 13 1/4 LG	12, 16, 18
712-11	Rear Spring Hanger – Cast, Fl/mt/bo, Left	5, 9, 13	7840-10	U-Bolt – 7/8 Dia. x 5" Square x 13 3/4 LG	12, 16, 18
712-12	Rear Spring Hanger – Cast, Fl/mt/bo, Right	5, 9, 13	7840-11	U-Bolt – 7/8 Dia. x 5" Square x 14 1/4 LG	12, 16, 18
715-00	Non-Adj. Radius Rod w/ Bushing – 19 1/4 LG	5, 9, 13	7840-12	U-Bolt – 7/8 Dia. x 5" Square x 14 3/4 LG	12, 16, 18
719-02	Radius Rod Bolt – Hex Bolt - 1 - 14 UNS x 5"	5, 9, 13	7840-13	U-Bolt – 7/8 Dia. x 5" Square x 15 1/4 LG	16
722-00	Radius Rod Bushing – 3 LG	5, 9, 13	7840-14	U-Bolt – 7/8 Dia. x 5" Square x 15 3/4 LG	16
751-01	Spring Assembly – 7 Leaf, Low Arch	4, Spring Appendix	9202-00	Top Plate – U-Bolt, 5" Round & 5" x 5" Square	16
751-04	Spring Assembly – 6 Leaf, Low Arch, 42 1/2 A/C	17, 18, Spring Appendix	10562-00	Flange Locknut – 1 - 14 UNS, GRF, Phosphate & Oil	5, 9, 13
751-05	Spring Assembly – 7 Leaf, High Arch	4, Spring Appendix	10775-00	Att., Assembly – Radius Rod, 5" Round	8
751-06	Spring Assembly – 7 Leaf, High Arch, Single Axle	4, Spring Appendix	11154-00	Hex Locknut – 1 1/8 - 7 UNC, GR5	5, 9, 13
752-01	Spring Assembly – 8 Leaf, Low Arch H.D.	4, Spring Appendix	16150-01	Hex Cap Screw – 1 1/8 x 7 x 6.62 LG, GR5	5, 9, 13
752-05	Spring Assembly – 8 Leaf, High Arch H.D.	4, Spring Appendix	16158-01	Rocker Assy. – Fabricated w/ Rubber Bushing	5, 9, 13
752-06	Spring Assembly – 8 Leaf, High Arch H.D. Single Axle & Widespread	4, Spring Appendix	16169-01	Center Rocker Hanger – Str/mt	5, 9, 13
756-00	Sleeve Spacer – 3/4 OD x 18 GA x 3 1/4"	5, 9, 13	16171-01	Center Rocker Hanger – Un/mt	5, 9, 13
759-00	Hex Bolt – 5/8" – 18 UNF x 4 1/2", GR2	5, 9, 13	16175-01	Center Rocker Hanger – Si/mt	5, 9, 13
817-00	Washer – 1/8" x 13/16 ID x 1 1/2 OD	5, 13	16178-01	Center Rocker Hanger – Fl/mt/bo	5, 9, 13
837-00	Washer – 1/8" x 1 1/4 ID x 2 1/4 OD	5, 9, 13	16179-01	Center Rocker Hanger – Fl/mt/wo	5, 9, 13
7040-06	U-Bolt – 7/8 Dia. x 3" Round x 9 3/4 LG	8, 17	16196-03	Center Rocker Hanger – Cast, Str/mt	5, 9, 13
7040-07	U-Bolt – 7/8 Dia. x 3" Round x 10 1/4 LG	8, 17	16197-03	Center Rocker Hanger – Cast, Un/mt & Si/mt	5, 9, 13
7040-08	U-Bolt – 7/8 Dia. x 3" Round x 10 3/4 LG	8, 17	16199-03	Center Rocker Hanger – Cast, Fl/mt/bo	5, 9, 13
7040-09	U-Bolt – 7/8 Dia. x 3" Round x 11 1/4 LG	8, 17	16199-05	Center Rocker Hanger – Cast, Fl/mt/wo	5, 9, 13
7040-10	U-Bolt – 7/8 Dia. x 3" Round x 11 3/4 LG	8, 17	16291-03	Front Spring Hanger – Cast, Un/mt & Si/mt, Left	5, 9, 13
7040-11	U-Bolt – 7/8 Dia. x 3" Round x 12 1/4 LG	8, 17	16291-04	Front Spring Hanger – Cast, Un/mt & Si/mt, Right	5, 9, 13
7040-12	U-Bolt – 7/8 Dia. x 3" Round x 12 3/4 LG	8, 17	16293-01	Rear Spring Hanger – Cast, Un/mt & Si/mt, Left	5, 9, 13
7040-13	U-Bolt – 7/8 Dia. x 3" Round x 13 1/4 LG	8, 17	16293-02	Rear Spring Hanger – Cast, Un/mt & Si/mt, Right	5, 9, 13
7040-14	U-Bolt – 7/8 Dia. x 3" Round x 13 3/4 LG	8, 17	16297-01	Bottom Plate – 5" Round, 3/4 Dia. U-Bolt	8
7040-15	U-Bolt – 7/8 Dia. x 3" Round x 14 1/4 LG	8, 17	16300-06	U-Bolt – 3/4 Dia. x 3" Round x 9 3/4 LG	8, 17
7040-16	U-Bolt – 7/8 Dia. x 3" Round x 14 3/4 LG	8, 17	16300-07	U-Bolt – 3/4 Dia. x 3" Round x 10 1/4 LG	8, 17
7040-17	U-Bolt – 7/8 Dia. x 3" Round x 15 1/4 LG	8, 17	16300-08	U-Bolt – 3/4 Dia. x 3" Round x 10 3/4 LG	8, 17
7040-18	U-Bolt – 7/8 Dia. x 3" Round x 15 3/4 LG	8, 17	16300-09	U-Bolt – 3/4 Dia. x 3" Round x 11 1/4 LG	8, 17
7040-19	U-Bolt – 7/8 Dia. x 3" Round x 16 1/4 LG	8, 17	16300-10	U-Bolt – 3/4 Dia. x 3" Round x 11 3/4 LG	8, 17
7040-20	U-Bolt – 7/8 Dia. x 3" Round x 16 3/4 LG	8, 17	16300-11	U-Bolt – 3/4 Dia. x 3" Round x 12 1/4 LG	8, 17
7040-21	U-Bolt – 7/8 Dia. x 3" Round x 17 1/4 LG	8, 17	16300-12	U-Bolt – 3/4 Dia. x 3" Round x 12 3/4 LG	8, 17
7040-22	U-Bolt – 7/8 Dia. x 3" Round x 17 3/4 LG	8	16300-13	U-Bolt – 3/4 Dia. x 3" Round x 13 1/4 LG	8, 17
7040-23	U-Bolt – 7/8 Dia. x 3" Round x 18 1/4 LG	8	16300-14	U-Bolt – 3/4 Dia. x 3" Round x 13 3/4 LG	8, 17
7051-42	Spring Assembly – 1 Leaf, Low Arch, 42 1/2 A/C	17, 18, Spring Appendix	16300-15	U-Bolt – 3/4 Dia. x 3" Round x 14 1/4 LG	8, 17
7701-01	Front Spring Hanger – Str/mt	5, 9, 13	16300-16	U-Bolt – 3/4 Dia. x 3" Round x 14 3/4 LG	8, 17
7701-05	Front Spring Hanger – Fl/mt/wo, Left	5, 9, 13	16300-17	U-Bolt – 3/4 Dia. x 3" Round x 15 1/4 LG	8, 17
7701-06	Front Spring Hanger – Fl/mt/wo, Right	5, 9, 13	16300-18	U-Bolt – 3/4 Dia. x 3" Round x 15 3/4 LG	8, 17
7701-07	Front Spring Hanger – Fl/mt/bo, Left	5, 9, 13	16300-19	U-Bolt – 3/4 Dia. x 3" Round x 16 1/4 LG	8, 17
7701-08	Front Spring Hanger – Fl/mt/bo, Right	5, 9, 13	16300-20	U-Bolt – 3/4 Dia. x 3" Round x 16 3/4 LG	17
7703-01	Rear Spring Hanger – Str/mt	5, 9, 13	16300-21	U-Bolt – 3/4 Dia. x 3" Round x 17 1/4 LG	17
7703-05	Rear Spring Hanger – Fl/mt/wo, Left	5, 9, 13	16303-01	Hex Nut – 3/4 - 16 UNF, GR8	5, 13
7703-06	Rear Spring Hanger – Fl/mt/wo, Right	5, 9, 13	16308-01	No-Hop Att. Assy. – 5" Round, 3/4 Dia. U-Bolt	8
7703-07	Rear Spring Hanger – Fl/mt/bo, Left	5, 9, 13	16316-01	Spring Assembly – FRP, Low Arch H.D.	4, Spring Appendix
7703-08	Rear Spring Hanger – Fl/mt/bo, Right	5, 9, 13	16319-01	Center Rocker & Hanger Assembly – Str/mt	5, 9, 13
7717-01	Washer Bushing	5, 9, 13	16319-02	Center Rocker & Hanger Assembly – Un/mt	5, 9, 13
7738-00	Att. Fitting – Radius Rod, 4" x 6" Rect.	8	16319-04	Center Rocker & Hanger Assembly – Si/mt	5, 9, 13
7738-01	Att. Fitting – Radius Rod, 5" x 5" Square	8	16319-07	Center Rocker & Hanger Assembly – Fl/mt/bo	5, 9, 13
7746-00	Bottom Plate – 4" x 6" Rect.	8	16319-08	Center Rocker & Hanger Assembly – Fl/mt/wo	5, 9, 13
7747-01	Bottom Plate – 5" x 5" Square	8	16319-51	Center Rocker & Hanger Assembly – Cast, Str/mt	5, 9, 13

Part No.	Description	Pg. #
16319-52	Center Rocker & Hanger Assembly – Cast, Un/mt & Si/mt	5, 9, 13
16319-57	Center Rocker & Hanger Assembly – Cast, Fl/mt/bo	5, 9, 13
16319-58	Center Rocker & Hanger Assembly – Cast, Fl/mt/wo	5, 9, 13
16353-01	Rocker Replacement Bolt Kit	5, 9, 13
16398-01	Adj. Radius Rod w/ Bushing & NEVER-SEEZ – 14 LG	17
16398-02	Adj. Radius Rod w/ Bushing & NEVER-SEEZ – 16 LG	17
16398-03	Adj. Radius Rod w/ Bushing & NEVER-SEEZ – 16 5/8 LG	17
16398-04	Adj. Radius Rod w/ Bushing & NEVER-SEEZ – 19 1/4 LG	5, 8, 9, 13
16398-06	Adj. Radius Rod w/ Bushing & NEVER-SEEZ – 21 1/2 LG	8
16481-01	Front Spring Hanger – Un/mt, Topless	5, 9, 13
16483-01	Rear Spring Hanger – Un/mt, Topless	5, 9, 13
16710-01	Spring Assembly – 2 Leaf, 2 Stage, Medium Arch	4, Spring Appendix
16868-01	Top Plate – Roll Formed	5
17350-02	Galvanized Liner – 3 x 7 1/2 w/ Hole	5, 9, 13
17784-01	Rocker Assembly w/ Rubber Bushing, Cast	5, 9, 13
17882-01	Spring Assembly – 2 Leaf, 2 Stage, Medium Arch	4, Spring Appendix
18723-01	Rocker Bushing Assembly – Rubber	5, 9, 13
19360-01	Spring Seat – Att., 5" Round, 3/4 High	5, 16
19360-02	Spring Seat – Att., 5" Round, 1 1/4 High	5, 16
19360-03	Spring Seat – Att., 5" Round, 1 3/4 High	5, 16
19360-04	Spring Seat – Att., 5" Round, 2 1/4 High	5, 16
19360-05	Spring Seat – Att., 5" Round, 2 3/4 High	5, 16
19360-06	Spring Seat – Att., 5" Round, 3 1/4 High	5, 16
19360-07	Spring Seat – Att., 5" Round, 3 3/4 High	5, 16
19360-08	Spring Seat – Att., 5" Round, 4 1/4 High	5, 16
19360-09	Spring Seat – Att., 5" Round, 4 3/4 High	5, 16
19364-01	Spring Seat – Att., 4" x 6" Rect., 3/4 High	5
19364-02	Spring Seat – Att., 4" x 6" Rect., 1 1/4 High	5
19364-03	Spring Seat – Att., 4" x 6" Rect., 1 3/4 High	5
19364-04	Spring Seat – Att., 4" x 6" Rect., 2 1/4 High	5
19364-05	Spring Seat – Att., 4" x 6" Rect., 2 3/4 High	5
19364-06	Spring Seat – Att., 4" x 6" Rect., 3 1/4 High	5
19364-07	Spring Seat – Att., 4" x 6" Rect., 3 3/4 High	5
19364-08	Spring Seat – Att., 4" x 6" Rect., 4 1/4 High	5
19364-09	Spring Seat – Att., 4" x 6" Rect., 4 3/4 High	5
19365-01	Spring Seat – Att., 5" x 5" Square, 3/4 High	5, 16
19365-02	Spring Seat – Att., 5" x 5" Square, 1 1/4 High	5, 16
19365-03	Spring Seat – Att., 5" x 5" Square, 1 3/4 High	5, 16
19365-04	Spring Seat – Att., 5" x 5" Square, 2 1/4 High	5, 16
19365-05	Spring Seat – Att., 5" x 5" Square, 2 3/4 High	5, 16
19365-06	Spring Seat – Att., 5" x 5" Square, 3 1/4 High	5, 16
19365-07	Spring Seat – Att., 5" x 5" Square, 3 3/4 High	5, 16
19365-08	Spring Seat – Att., 5" x 5" Square, 4 1/4 High	5, 16
19365-09	Spring Seat – Att., 5" x 5" Square, 4 3/4 High	5, 16
20728-01	Front Spring Hanger – Un/mt	5, 9, 13
20729-01	Front Spring Hanger – Si/mt, Left	5, 9, 13
20730-01	Front Spring Hanger – Si/mt, Right	5, 9, 13
20732-01	Rear Spring Hanger – Un/mt	5, 9, 13
20733-01	Rear Spring Hanger – Si/mt, Left	5, 9, 13
20734-01	Rear Spring Hanger – Si/mt, Right	5, 9, 13
22215-01	Spring Seat – 5" Round, 3/4 High	8, 12
22215-02	Spring Seat – 5" Round, 1 1/4 High	8, 12
22215-03	Spring Seat – 5" Round, 1 3/4 High	8, 12
22215-04	Spring Seat – 5" Round, 2 1/4 High	8, 12
22226-01	Spring Seat – 5" x 5" Square, 3/4 High	8, 12
22226-02	Spring Seat – 5" x 5" Square, 1 1/4 High	8, 12
22226-03	Spring Seat – 5" x 5" Square, 1 3/4 High	8, 12
22226-04	Spring Seat – 5" x 5" Square, 2 1/4 High	8, 12
22228-01	Spring Seat – 4" x 6" Rect., 3/4 High	8
22228-02	Spring Seat – 4" x 6" Rect., 1 1/4 High	8
22228-03	Spring Seat – 4" x 6" Rect., 1 3/4 High	8
22228-04	Spring Seat – 4" x 6" Rect., 2 1/4 High	8
24711-01	Rocker Assy. – Fabricated w/ Rubber Bushing, 44"/50"/51" A/C	17



Advancing the Practical Application of Suspension Technology

Springfield, MO ■ (800) 654-8824 ■ (417) 862-5012
Fax (417) 862-2317 ■ www.hutchensindustries.com