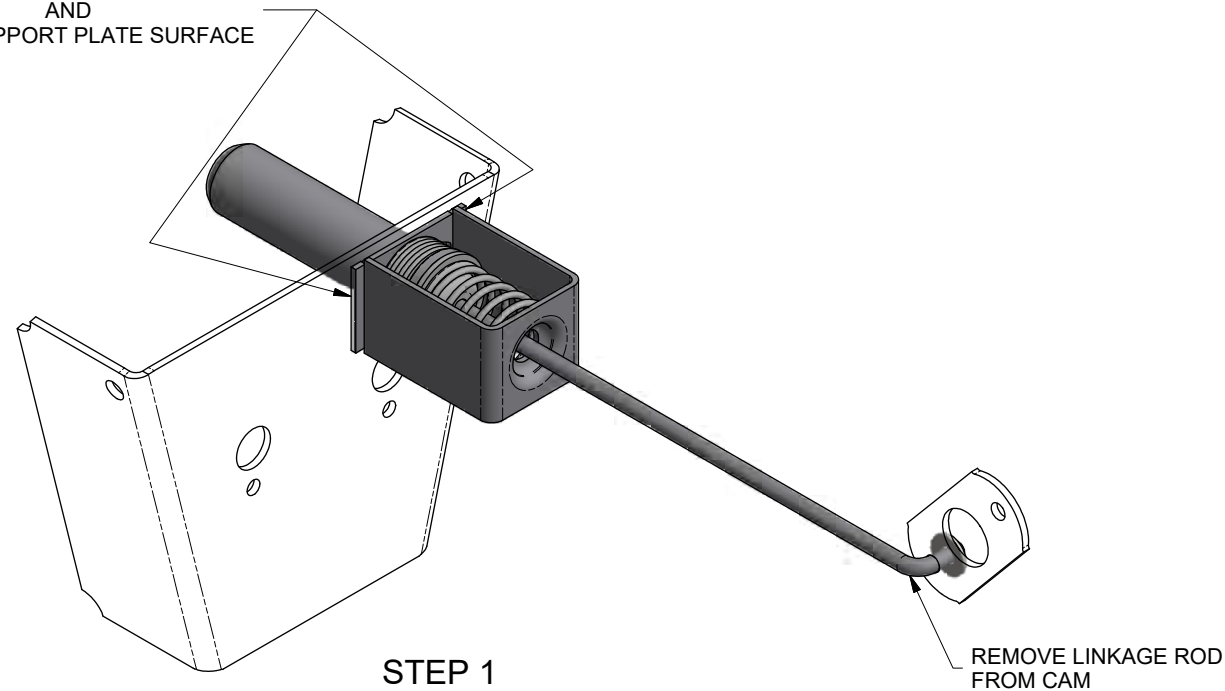
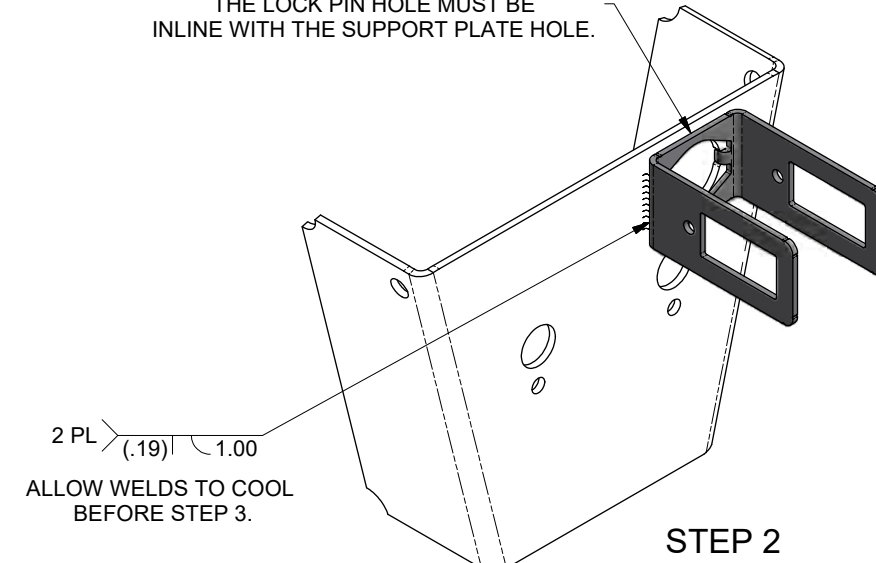


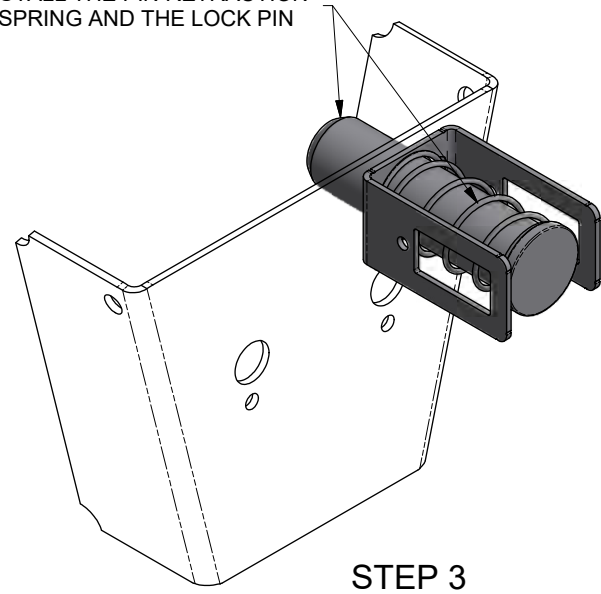
REMOVE WELDS
AND
CLEAN SUPPORT PLATE SURFACE



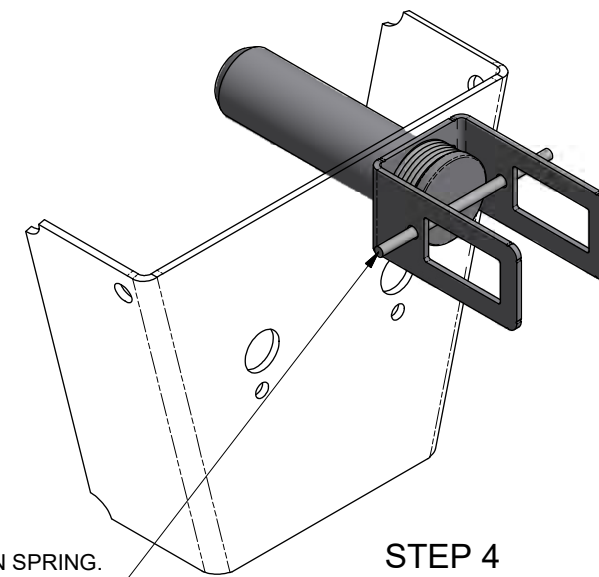
POSITION THE SPRING CAGE.
THE LOCK PIN HOLE MUST BE
INLINE WITH THE SUPPORT PLATE HOLE.



INSTALL THE PIN RETRACTION
SPRING AND THE LOCK PIN



COMPRESS THE LOCK PIN AND RETRACTION SPRING.
INSERT A RETAINER (ROD, SCREWDRIVER, ETC.)
THROUGH THE PIN CAGE HOLES.

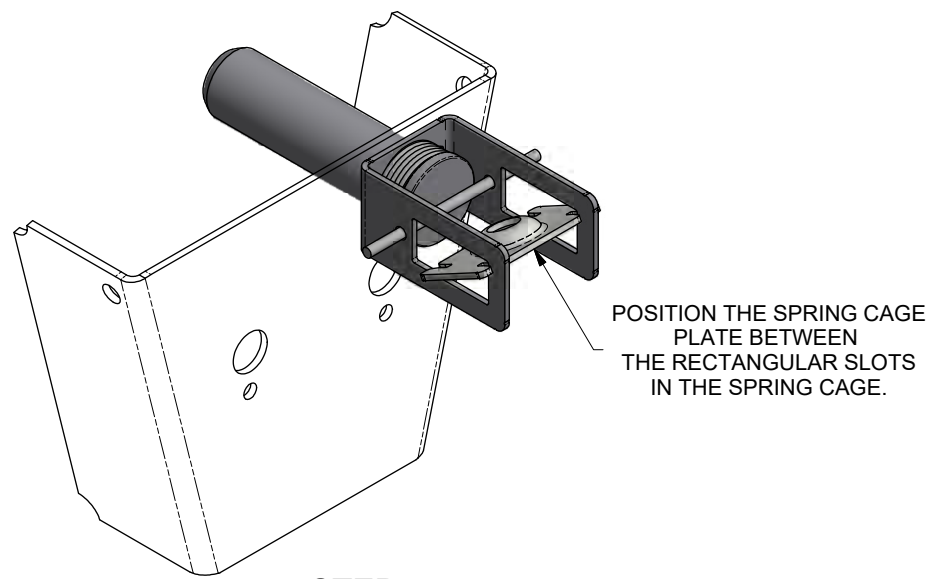


3. MAKE SURE LOCK PINS EXTEND AND FULLY RETRACT BEFORE PLACING SLIDER IN SERVICE.
2. SLIDER MODEL: SERIES 10.
1. INSTALLATION PROCEDURE FOR KIT 29560-01 AND -02.

NEXT ASSY: NEXT		ER NO.	SYM	DATE	BY	CHK	APPD
TOLERANCES (UNLESS OTHERWISE SPECIFIED) DECIMAL .X ± .1 DECIMAL .XX ± .06 DECIMAL .XXX ± .030 ANGULAR ± 1° HOLES: .50 DIA AND LESS: ± .007 .51 DIA AND GREATER: ± .01 REMOVE ALL SHARP BURRS & SHARP CORNERS THAT MIGHT AFFECT ASSEMBLY, APPEARANCE, OR OPERATION OF OUR PRODUCTS.		DRAWN:	ML	3/22/2018			
		CHECKED:	JAJ	10/4/2018			
		APPROVED:	RSB	10/4/2018			
		MFG APPL:	N/A	XXXXXX			
		ER:	2018044	10/5/2018			
		PROJECT OR FILE REFERENCE NO.:	PROJ#: 20180400				
			EPR#: 20180400-01				
		SCALE:	D SIZE - 1/2				
			B SIZE - 1/4				
		SHEET 1 OF 2		SIZE:	D	DRAWING NO.:	29676
				REV.:	-	DRAWING NO. 29676	
				REV.:	1	OF 2	

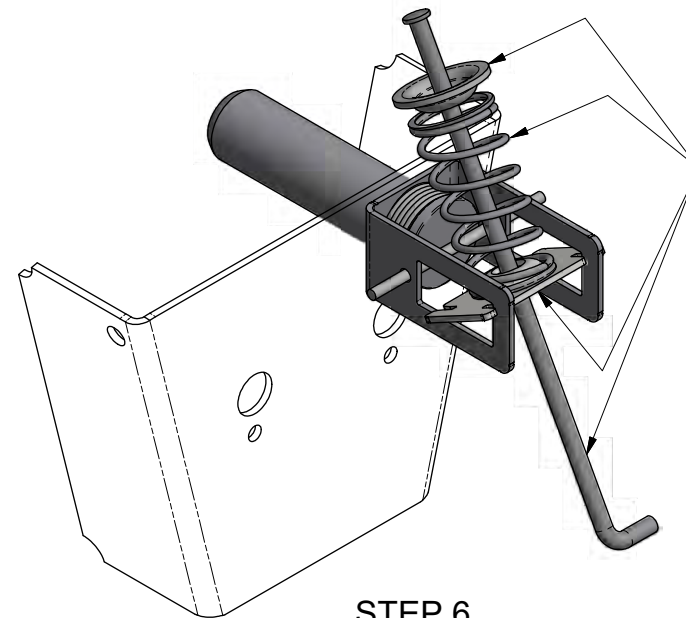
This confidential drawing is the property of Hutchens Industries, Inc. Hutchens Industries makes no warranties regarding the information on this document. Nothing herein may be transmitted or disclosed in whole or in part to other parties. The recipient of this drawing agrees not to use the information for manufacturing, nor will they modify, distribute, reverse engineer, or create derivative works based on the information contained on this print without the prior written permission of Hutchens Industries, Inc. The recipient agrees not to make copies of the document or reproduce in any manner the information in the document and to return it to Hutchens Industries upon request. Any use of this document is acceptance of the terms stated above.

This confidential drawing is the property of Hutchens Industries. Hutchens Industries makes no warranties regarding the information on this document. Nothing herein may be transmitted or disclosed in whole or in part to other parties. The recipient of this drawing agrees not to use the information for manufacturing, nor will they modify, distribute, reverse engineer, or create derivative works based on the information contained on this print without the prior written permission of Hutchens Industries. The recipient agrees not to make copies of the document or reproduce in any manner the information in the document and to return it to Hutchens Industries upon request. Any use of this document is acceptance of the terms stated above.



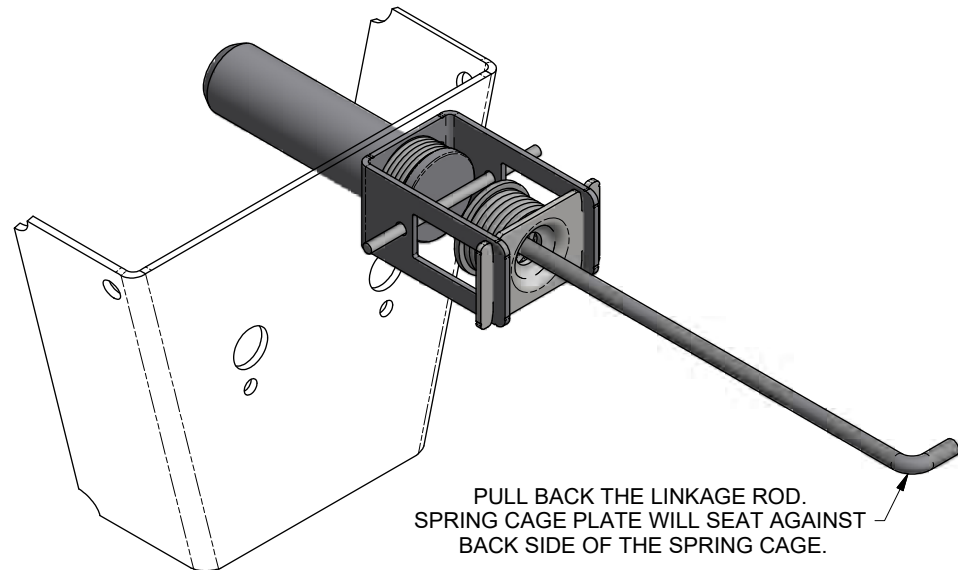
POSITION THE SPRING CAGE PLATE BETWEEN THE RECTANGULAR SLOTS IN THE SPRING CAGE.

STEP 5



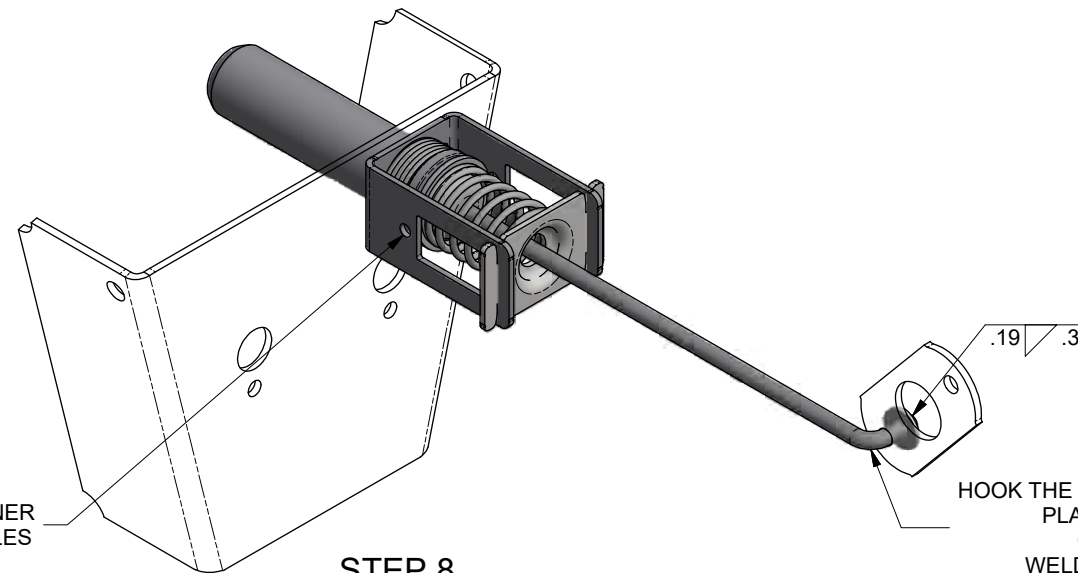
ASSEMBLE SPECIAL WASHER AND PIN ENGAGEMENT SPRING ONTO LINKAGE ROD AND GUIDE THROUGH THE SPRING CAGE PLATE.

STEP 6



PULL BACK THE LINKAGE ROD. SPRING CAGE PLATE WILL SEAT AGAINST BACK SIDE OF THE SPRING CAGE.

STEP 7



REMOVE THE RETAINER FROM PIN CAGE HOLES

HOOK THE END OF THE LINKAGE ROD THROUGH THE CAM. PLACE THE WASHER ON THE LINKAGE ROD ON THE OPPOSITE SIDE OF THE CAM. WELD THE WASHER ON TO THE LINKAGE ROD.

STEP 8

3. MAKE SURE LOCK PINS EXTEND AND FULLY RETRACT BEFORE PLACING SLIDER IN SERVICE.
2. SLIDER MODEL: SERIES 10.
1. INSTALLATION PROCEDURE FOR KIT 29560-01 AND -02.

NEXT ASSY: NEXT TOLERANCES (UNLESS OTHERWISE SPECIFIED) DECIMAL .X ± .1 DECIMAL .XX ± .06 DECIMAL .XXX ± .030 ANGULAR ± 1° HOLES: .50 DIA AND LESS: ± .007 .51 DIA AND GREATER: ± .01 REMOVE ALL SHARP BURRS & SHARP CORNERS THAT MIGHT AFFECT ASSEMBLY, APPEARANCE, OR OPERATION OF OUR PRODUCTS.	DRAWN: ML CHECKED: JAJ APPROVED: RSB MFG APPL: N/A ER: 2018044 PROJECT OR FILE REFERENCE NO.: PROJ#: 20180400 EPR#: 20180400-01	DATE: 3/22/2018 DATE: 10/4/2018 DATE: 10/4/2018 DATE: XX/XX/XX DATE: 10/5/2018	REVISIONS DATE BY CHK APPD 1 HUTCHENS INDUSTRIES, INC. SPRINGFIELD, MISSOURI	TITLE: INSTALLATION PROCEDURE FOR 29560-01, -02 KIT	SCALE: D SIZE - 1/2 B SIZE - 1/4	SHEET 2 OF 2 D 29676	REV. 2 OF 2	
	DRAWING NO.: 29676		HUTCHENS INDUSTRIES, INC. SPRINGFIELD, MISSOURI		DRAWING NO.: 29676		REV. 2 OF 2	
	PROJECT OR FILE REFERENCE NO.: PROJ#: 20180400 EPR#: 20180400-01		DATE: 10/5/2018		SCALE: D SIZE - 1/2 B SIZE - 1/4		SHEET 2 OF 2 D 29676	
	TOLERANCES (UNLESS OTHERWISE SPECIFIED)		DATE: 10/4/2018		TITLE:		REV. 2 OF 2	