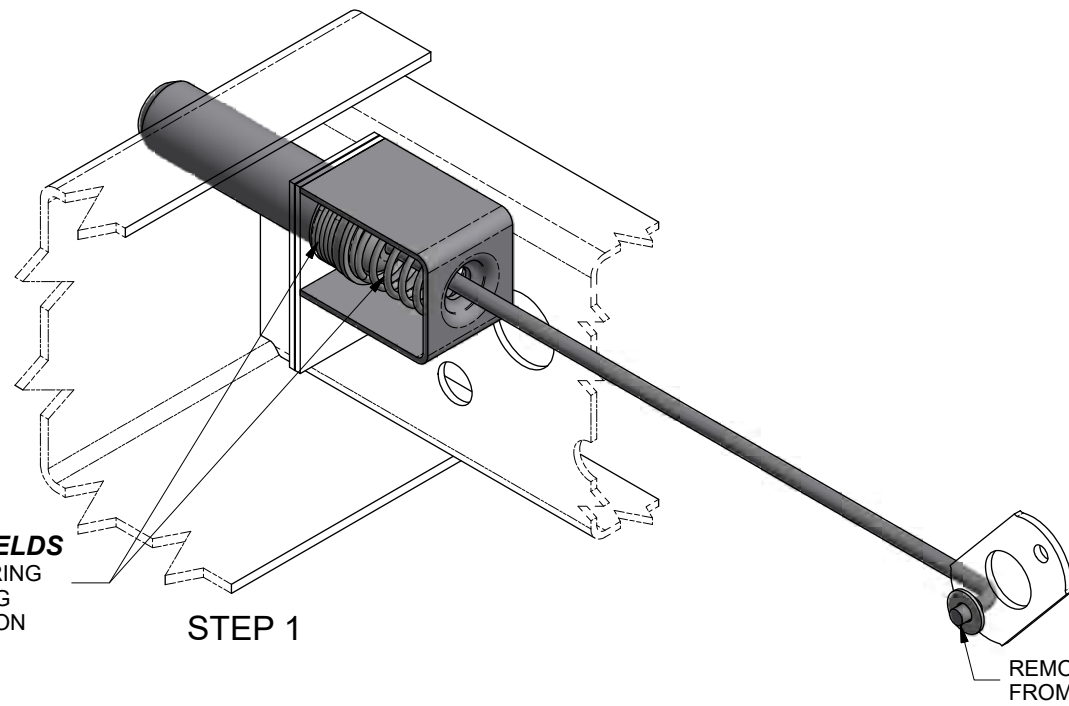


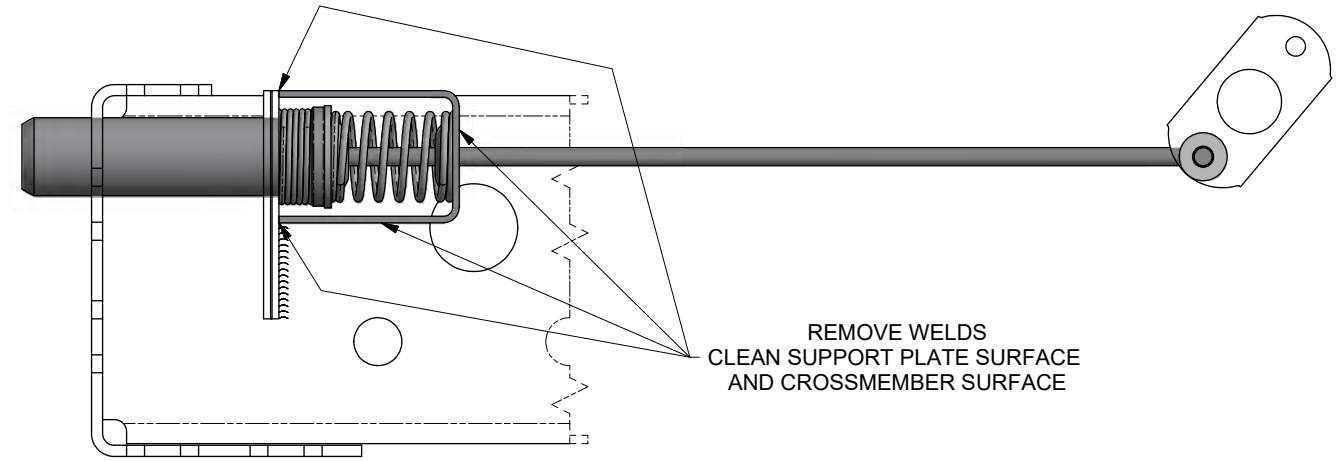
This confidential drawing is the property of Hutchens Industries, Inc. Hutchens Industries makes no warranties regarding the information on this document. Nothing herein may be transmitted or disclosed in whole or in part to other parties. The recipient of this drawing agrees not to use the information for manufacturing, nor will they modify, distribute, reverse engineer, or create derivative works based on the information contained on this print without the prior written permission of Hutchens Industries, Inc. The recipient agrees not to make copies of the document or reproduce in any manner the information in the document and to return it to Hutchens Industries upon request. Any use of this document is acceptance of the terms stated above.



BEFORE REMOVING ANY WELDS
 CUT THE PIN ENGAGEMENT SPRING
 AND PIN RETRACTION SPRING
 TO RELEASE THE COMPRESSION

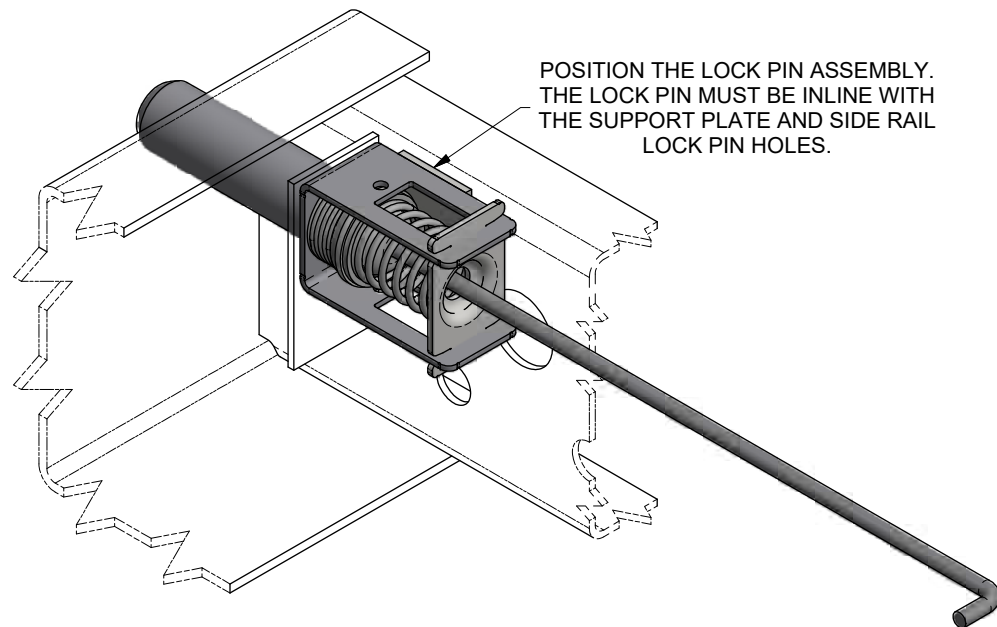
STEP 1

REMOVE LINKAGE ROD
 FROM CAM



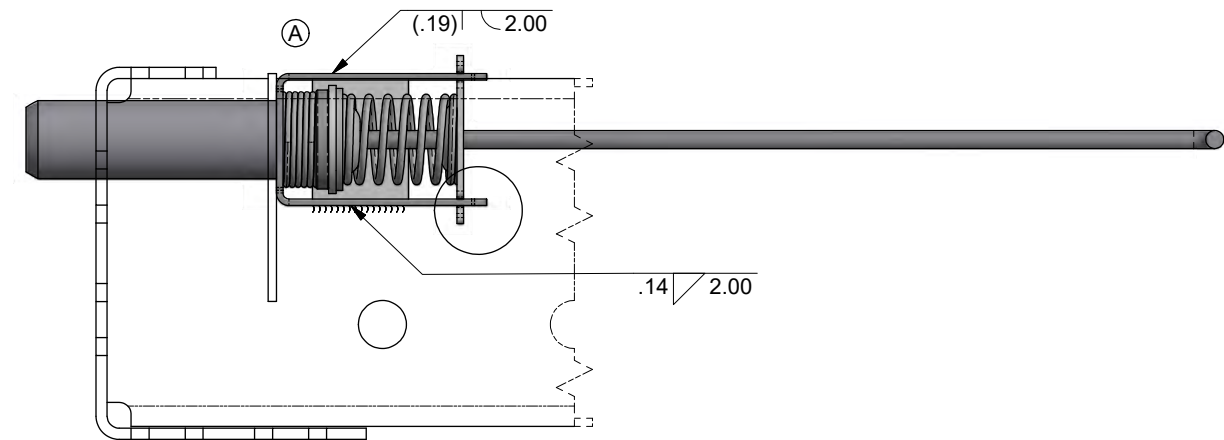
REMOVE WELDS
 CLEAN SUPPORT PLATE SURFACE
 AND CROSSMEMBER SURFACE

STEP 2




POSITION THE LOCK PIN ASSEMBLY.
 THE LOCK PIN MUST BE INLINE WITH
 THE SUPPORT PLATE AND SIDE RAIL
 LOCK PIN HOLES.

STEP 3

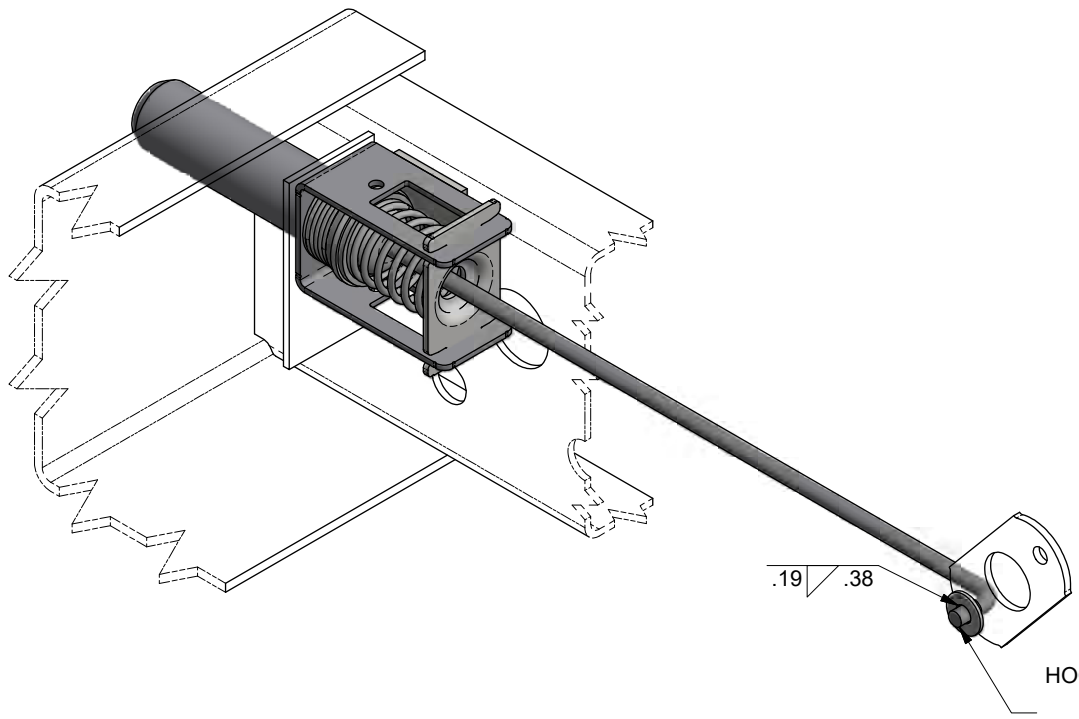


STEP 4

3. MAKE SURE LOCK PINS EXTEND AND FULLY RETRACT BEFORE PLACING SLIDER IN SERVICE.
2. SLIDER MODEL: NEWAY NSH SLIDES FRONT PIN.
1. INSTALLATION PROCEDURE FOR KIT 29559-06 AND -07.

2018224	A	PICTORIALLY UPDATED PER PIN CAGE CHANGE.			12/18	ML	JAJ	RSB		
ER NO.	SYM	REVISIONS			DATE	BY	CHK	APPD		
DRAWN:	ML	DATE:	3/22/2018		 HUTCHENS INDUSTRIES, INC. SPRINGFIELD, MISSOURI					
CHECKED:	JAJ	DATE:	10/3/2018							
APPROVED:	RSB	DATE:	10/3/2018							
MFG APPL:	N/A	DATE:	XX/XX/XX							
ER:	2018044	DATE:	10/4/2018		TITLE: INSTALLATION PROCEDURE FOR 29559-06, -07 KIT					
PROJECT OR FILE REFERENCE NO.		PROJ#:		20180400		EPR#:			20180400-01	
SCALE:		D SIZE - 1/2		B SIZE - 1/4		SHEET 1 OF 2		DRAWING NO.:		29677
						REV.:		A		1 OF 2

This confidential drawing is the property of Hutchens Industries, Hutchens Industries makes no warranties regarding the information on this document. Nothing herein may be transmitted or disclosed in whole or in part to other parties. The recipient of this drawing agrees not to use the information for manufacturing, nor will they modify, distribute, reverse engineer, or create derivative works based on the information contained on this print without the prior written permission of Hutchens Industries. The recipient agrees not to make copies of the document or reproduce in any manner the information in the document and to return it to Hutchens Industries upon request. Any use of this document is acceptance of the terms stated above.



STEP 10

HOOK THE END OF THE LINKAGE ROD THROUGH THE CAM.
 PLACE THE WASHER ON THE LINKAGE ROD
 ON THE OPPOSITE SIDE OF THE CAM.
 WELD THE WASHER ON TO THE LINKAGE ROD.

3. MAKE SURE LOCK PINS EXTEND AND FULLY RETRACT BEFORE PLACING SLIDER IN SERVICE.
2. SLIDER MODEL: NEWAY NSH SLIDES FRONT PIN.
1. INSTALLATION PROCEDURE FOR KIT 29559-06 AND -07.

2018224		A	PICTORIALLY UPDATED PER PIN CAGE CHANGE.				12/18	ML	JAJ	RSB
ER NO.	SYM	REVISIONS				DATE	BY	CHK	APPD	29677
DRAWN: ML		DATE:	3/22/2018							
CHECKED: JAJ		DATE:	10/3/2018							
APPROVED: RSB		DATE:	10/3/2018							
MFG APPL: N/A		DATE:	XX/XX/XX							
ER: 2018044		DATE:	10/4/2018							
PROJECT OR FILE REFERENCE NO.		PROJ#: 20180400								
		EPR#: 20180400-01								
SCALE:		D SIZE - 1/2		SHEET 2 OF 2		SIZE: D		DRAWING NO.: 29677		REV. A
		B SIZE - 1/4								2 OF 2
NEXT ASSY: NEXT		<div style="display: flex; align-items: center;"> <div> <p>HUTCHENS INDUSTRIES, INC. SPRINGFIELD, MISSOURI</p> <p>INSTALLATION PROCEDURE FOR 29559-06, -07 KIT</p> </div> </div>								
TOLERANCES (UNLESS OTHERWISE SPECIFIED) DECIMAL .X ± .1 DECIMAL .XX ± .06 DECIMAL .XXX ± .030 ANGULAR ± 1° HOLES: .50 DIA AND LESS: ± .007 .51 DIA AND GREATER: ± .01 REMOVE ALL SHARP BURRS & SHARP CORNERS THAT MIGHT AFFECT ASSEMBLY, APPEARANCE, OR OPERATION OF OUR PRODUCTS.										