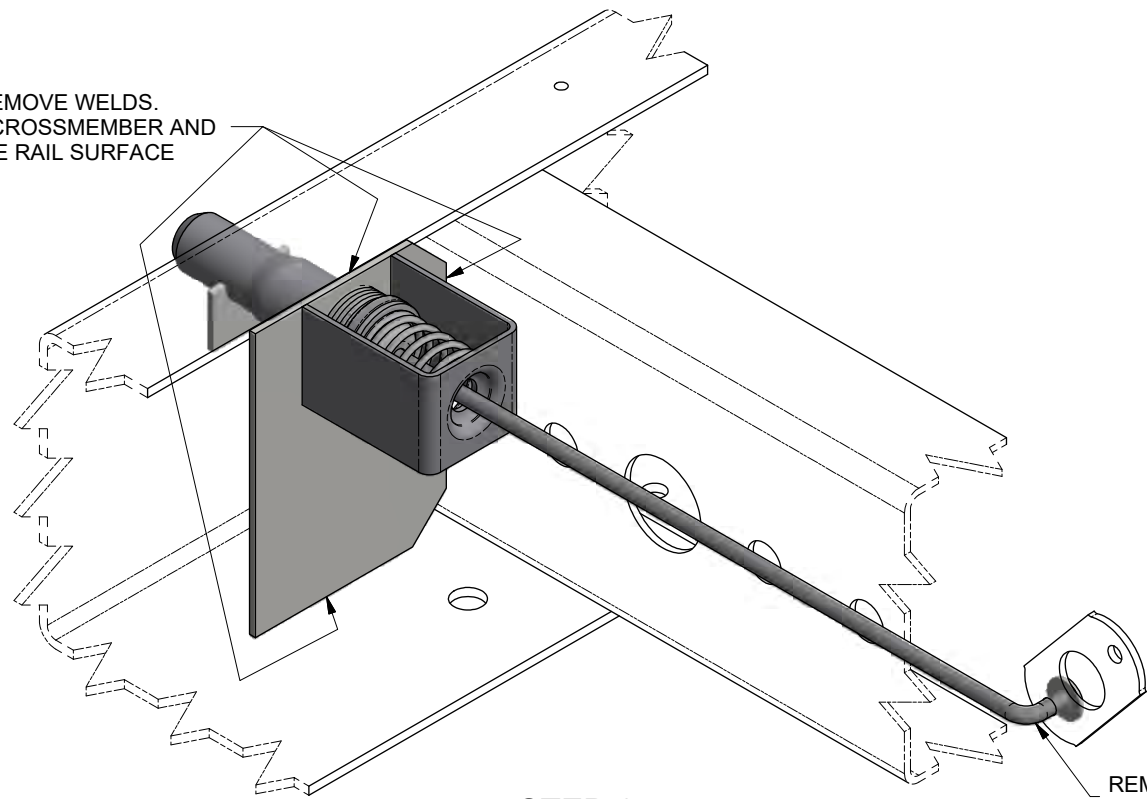


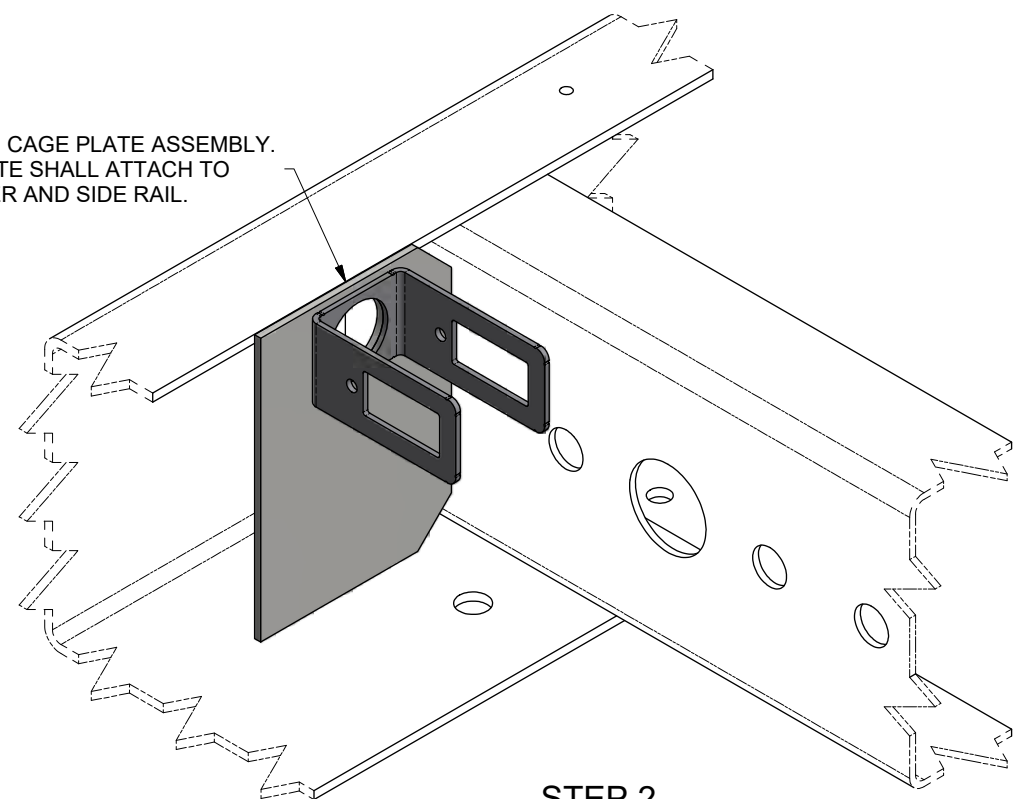
REMOVE WELDS.
CLEAN CROSSMEMBER AND
SIDE RAIL SURFACE



STEP 1

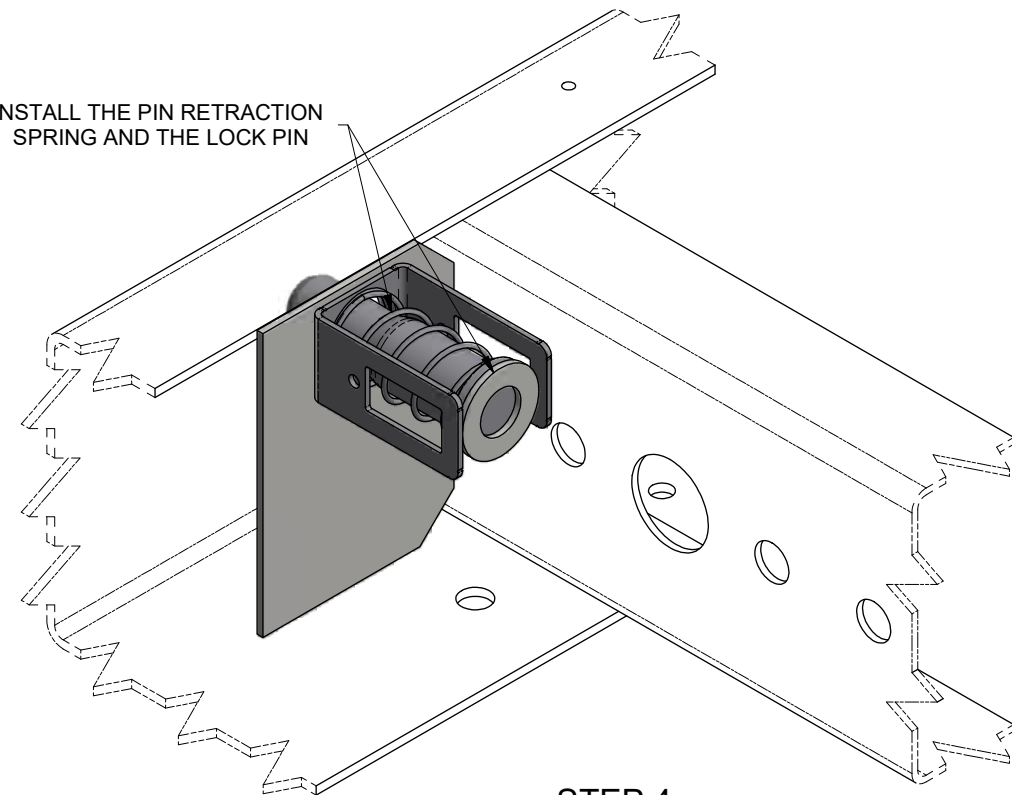
REMOVE LINKAGE ROD
FROM CAM

POSITION THE SPRING CAGE PLATE ASSEMBLY.
SPRING CAGE PLATE SHALL ATTACH TO
CROSSMEMBER AND SIDE RAIL.



STEP 2

INSTALL THE PIN RETRACTION
SPRING AND THE LOCK PIN

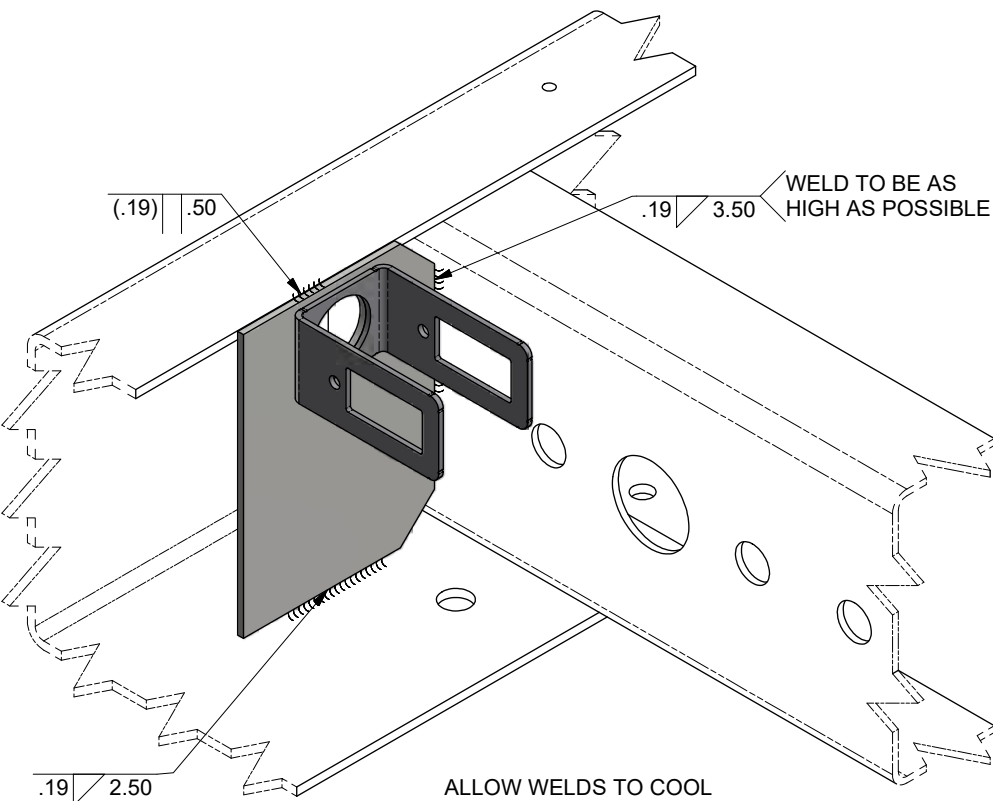


STEP 4

(.19) .50

.19 3.50

WELD TO BE AS
HIGH AS POSSIBLE



.19 2.50

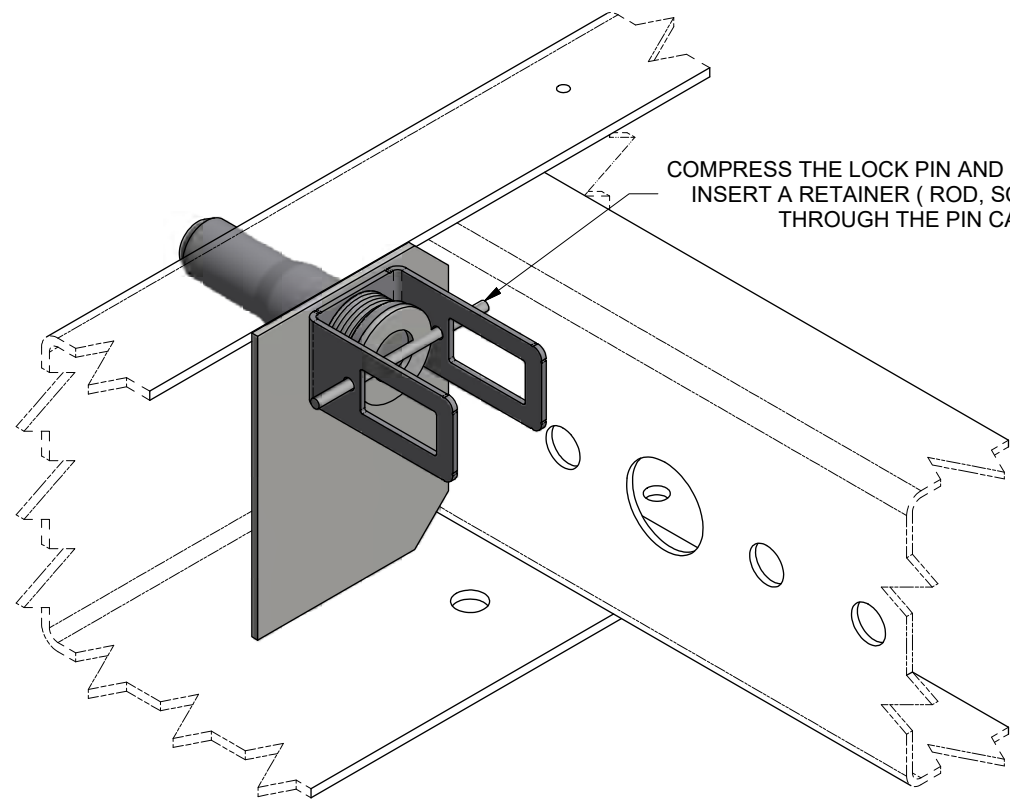
ALLOW WELDS TO COOL
BEFORE STEP 4.

STEP 3

3. MAKE SURE LOCK PINS EXTEND AND FULLY RETRACT BEFORE PLACING SLIDER IN SERVICE.
2. SLIDER MODEL: DANA ADVANTAGE SLIDER BINKLEY STYLE REAR PIN.
1. INSTALLATION PROCEDURE FOR KIT 29571-04 AND -05.

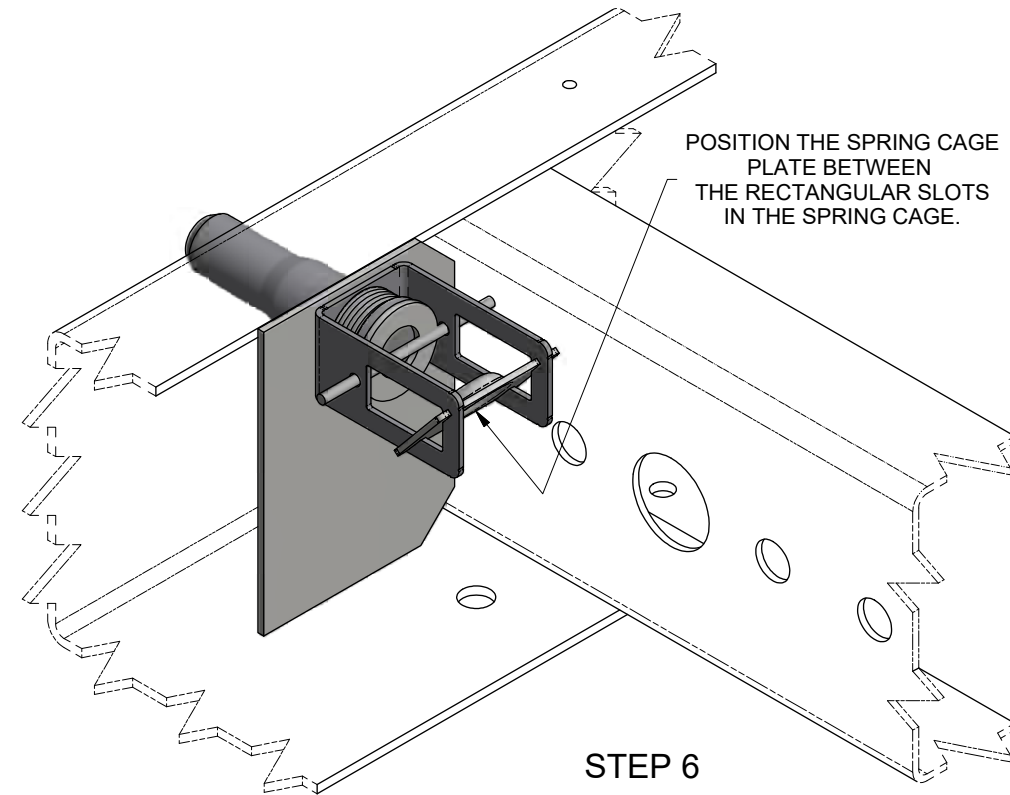
| | | | | | | | | | | |
|---|--|--------------------------------|------------------------------|-----------|-----------|--------------|------|--|-----|------|
| NEXT ASSY: NEXT | | ER NO. | SYM | REVISIONS | | | DATE | BY | CHK | APPD |
| TOLERANCES (UNLESS OTHERWISE SPECIFIED) DECIMAL .X ± .1 DECIMAL .XX ± .06 DECIMAL .XXX ± .030 ANGULAR ± 1° | | DRAWN: | ML | DATE: | 3/22/2018 | | | HUTCHENS INDUSTRIES, INC. SPRINGFIELD, MISSOURI | | |
| HOLES: .50 DIA AND LESS: ± .007 .51 DIA AND GREATER: ± .01 | | CHECKED: | JAJ | DATE: | 10/4/2018 | | | | | |
| REMOVE ALL SHARP BURRS & SHARP CORNERS THAT MIGHT AFFECT ASSEMBLY, APPEARANCE, OR OPERATION OF OUR PRODUCTS. | | APPROVED: | RSB | DATE: | 10/4/2018 | TITLE: | | INSTALLATION PROCEDURE FOR 29571-04, -05 KIT | | |
| | | MFG APPL: | N/A | DATE: | XX/XX/XX | | | | | |
| | | ER: | 2018044 | DATE: | 10/5/2018 | | | | | |
| | | PROJECT OR FILE REFERENCE NO.: | PROJ#: 20180400 | | | | | | | |
| | | EPR#: | 20180400-01 | | | | | | | |
| | | SCALE: | D SIZE - 1/2 B SIZE - 1/4 | | | | | | | |
| | | SHEET 1 OF 3 | | SIZE: | D | DRAWING NO.: | | 29701 | | |
| | | | | | | | | REV. 1 OF 3 | | |

This confidential drawing is the property of Hutchens Industries, Hutchens Industries makes no warranties regarding the information on this document. Nothing herein may be transmitted or disclosed in whole or in part to other parties. The recipient of this drawing agrees not to use the information for manufacturing, nor will they modify, distribute, reverse engineer, or create derivative works based on the information contained on this print without the prior written permission of Hutchens Industries. The recipient agrees not to make copies of the document or reproduce in any manner the information in the document and to return it to Hutchens Industries upon request. Any use of this document is acceptance of the terms stated above.



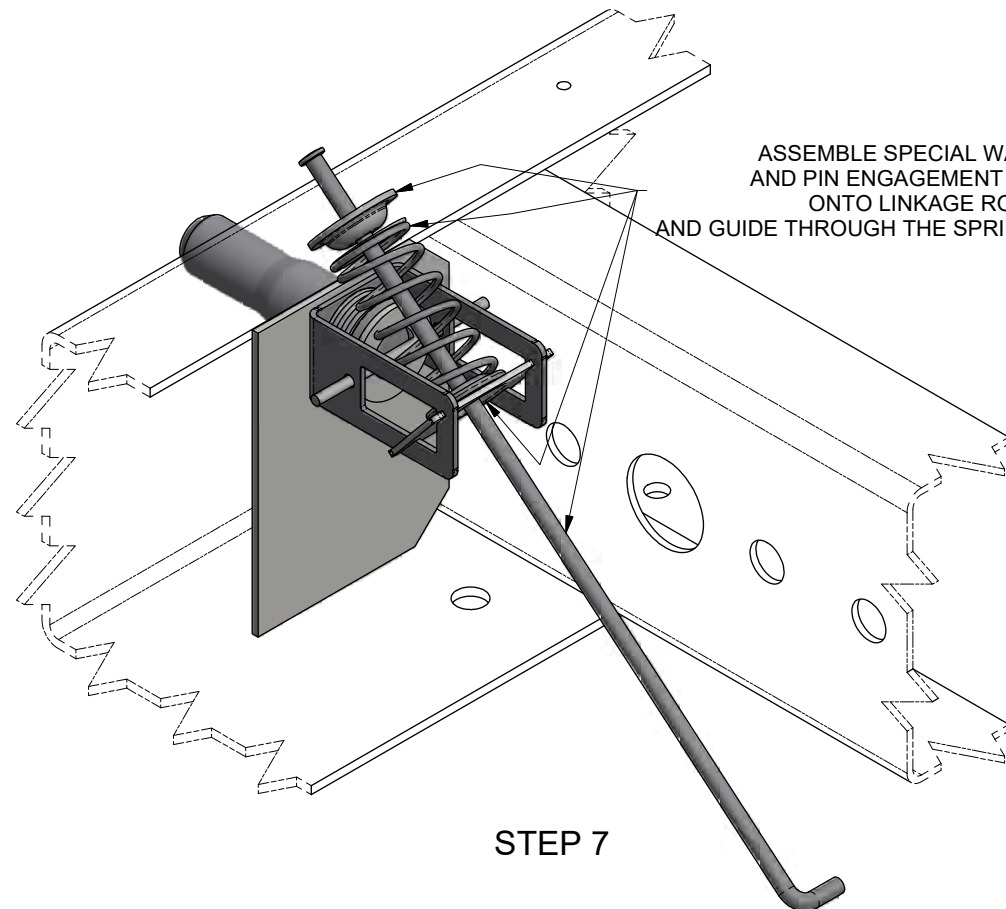
COMPRESS THE LOCK PIN AND RETRACTION SPRING.
INSERT A RETAINER (ROD, SCREWDRIVER, ETC.)
THROUGH THE PIN CAGE HOLES.

STEP 5



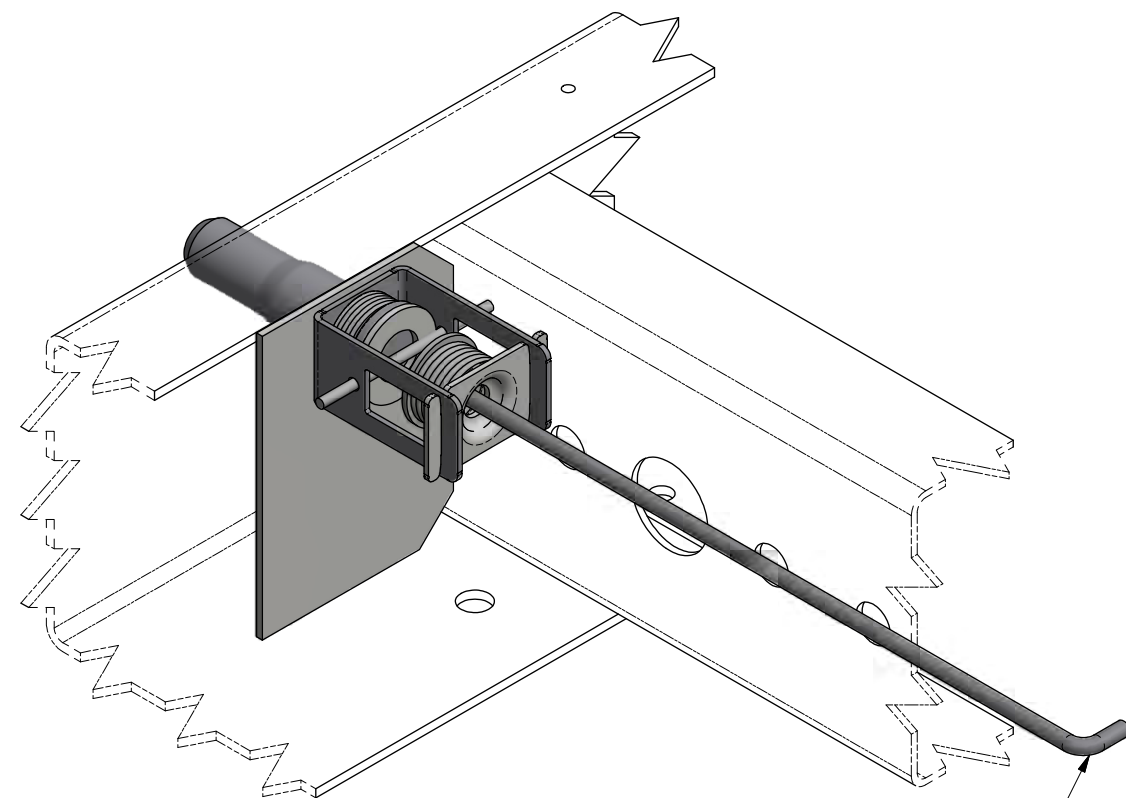
POSITION THE SPRING CAGE
PLATE BETWEEN
THE RECTANGULAR SLOTS
IN THE SPRING CAGE.

STEP 6



ASSEMBLE SPECIAL WASHER
AND PIN ENGAGEMENT SPRING
ONTO LINKAGE ROD
AND GUIDE THROUGH THE SPRING CAGE PLATE.

STEP 7



PULL BACK THE LINKAGE ROD.
SPRING CAGE PLATE WILL SEAT AGAINST
BACK SIDE OF THE SPRING CAGE.

STEP 8

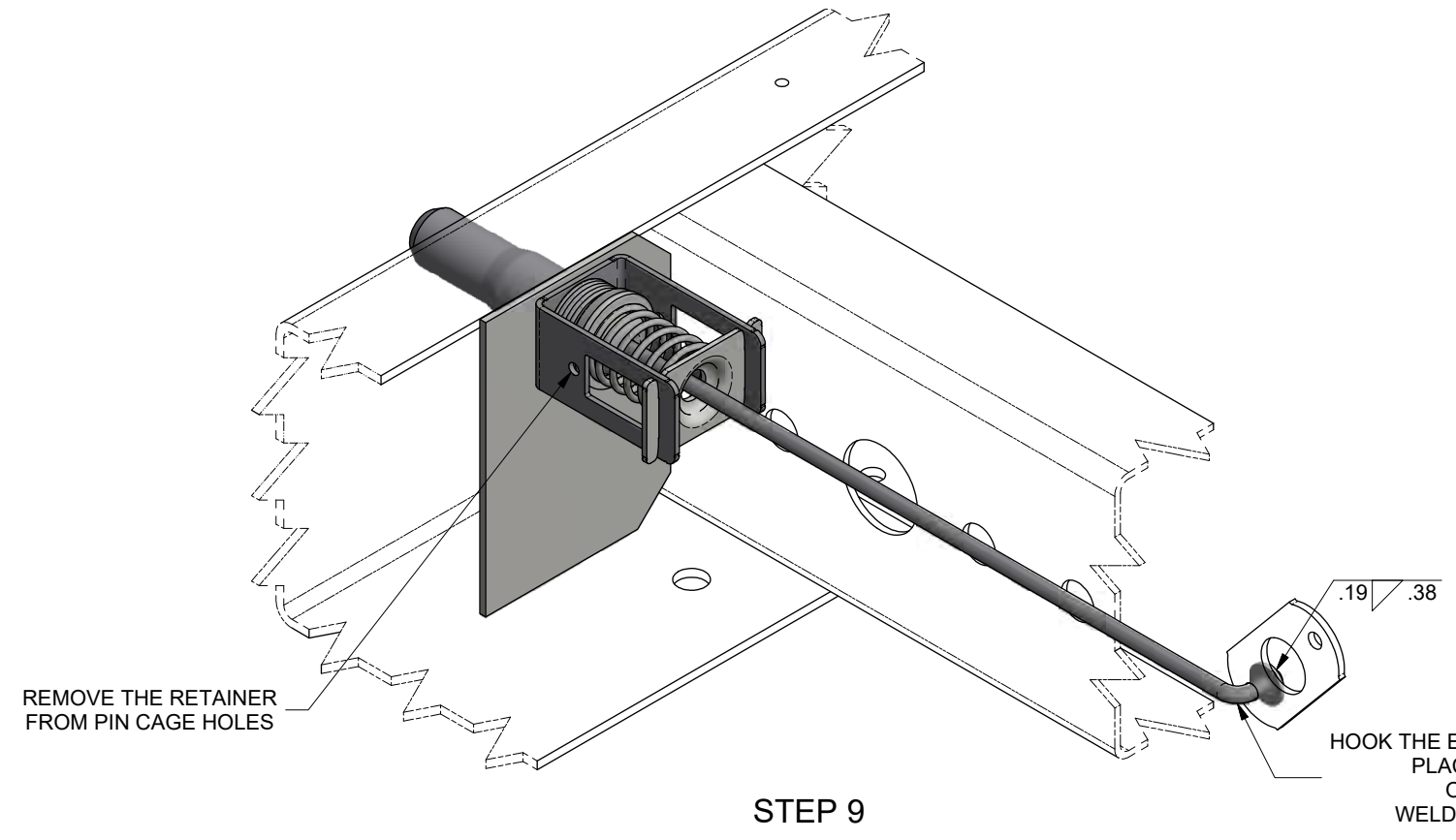
3. MAKE SURE LOCK PINS EXTEND AND FULLY RETRACT BEFORE PLACING SLIDER IN SERVICE.
2. SLIDER MODEL: DANA ADVANTAGE SLIDER BINKLEY STYLE REAR PIN.
1. INSTALLATION PROCEDURE FOR KIT 29571-04 AND -05.

| | | | | |
|---|---|--|--|---|
| NEXT ASSY: NEXT TOLERANCES (UNLESS OTHERWISE SPECIFIED) DECIMAL .X ± .1 DECIMAL .XX ± .06 DECIMAL .XXX ± .030 ANGULAR ± 1° HOLES: .50 DIA AND LESS: ± .007 .51 DIA AND GREATER: ± .01 REMOVE ALL SHARP BURRS & SHARP CORNERS THAT MIGHT AFFECT ASSEMBLY, APPEARANCE, OR OPERATION OF OUR PRODUCTS. | DRAWN: ML CHECKED: JAJ APPROVED: RSB MFG APPL: N/A ER: 2018044 PROJECT OR FILE REFERENCE NO: PROJ#: 20180400 EPR#: 20180400-01 SCALE: D SIZE - 1/2 B SIZE - 1/4 | DATE: 3/22/2018 DATE: 10/4/2018 DATE: 10/4/2018 DATE: XXXXXX DATE: 10/5/2018 | REVISIONS DATE BY CHK APPD 29701 REV: - 2 OF 3 | HUTCH Hutchens Industries HUTCHENS INDUSTRIES, INC. SPRINGFIELD, MISSOURI TITLE: INSTALLATION PROCEDURE FOR 29571-04, -05 KIT SHEET 2 OF 3 D DRAWING NO.: 29701 REV: - 3 |
| | ER NO. SYM DATE BY CHK APPD 29701 REV: - 2 OF 3 | | | HUTCH Hutchens Industries HUTCHENS INDUSTRIES, INC. SPRINGFIELD, MISSOURI TITLE: INSTALLATION PROCEDURE FOR 29571-04, -05 KIT SHEET 2 OF 3 D DRAWING NO.: 29701 REV: - 3 |

This confidential drawing is the property of Hutchens Industries. Hutchens Industries makes no warranties regarding the information on this document. Nothing herein may be transmitted or disclosed in whole or in part to other parties. The recipient of this drawing agrees not to use the information for manufacturing, nor will they modify, distribute, reverse engineer, or create derivative works based on the information contained on this print without the prior written permission of Hutchens Industries. The recipient agrees not to make copies of the document or reproduce in any manner the information in the document and to return it to Hutchens Industries upon request. Any use of this document is acceptance of the terms stated above.
 DRAWING NO. 29701
 REV. -
 2 OF 3

This confidential drawing is the property of Hutchens Industries, Hutchens Industries makes no warranties regarding the information on this document. Nothing herein may be transmitted or disclosed in whole or in part to other parties. The recipient of this drawing agrees not to use the information for manufacturing, nor will they modify, distribute, reverse engineer, or create derivative works based on the information contained on this print without the prior written permission of Hutchens Industries. The recipient agrees not to make copies of the document or reproduce in any manner the information in the document and to return it to Hutchens Industries upon request. Any use of this document is acceptance of the terms stated above.

DRAWING NO. 29701
REV. 3 OF 3




STEP 9

REMOVE THE RETAINER FROM PIN CAGE HOLES

HOOK THE END OF THE LINKAGE ROD THROUGH THE CAM.
PLACE THE WASHER ON THE LINKAGE ROD ON THE OPPOSITE SIDE OF THE CAM.
WELD THE WASHER ON TO THE LINKAGE ROD.

3. MAKE SURE LOCK PINS EXTEND AND FULLY RETRACT BEFORE PLACING SLIDER IN SERVICE.
2. SLIDER MODEL: DANA ADVANTAGE SLIDER BINKLEY STYLE REAR PIN.
1. INSTALLATION PROCEDURE FOR KIT 29571-04 AND -05.

| | | | | | | | | | |
|--|--|-----------------|---------|-------------------|-----------|--|----|-----|------|
| NEXT ASSY: NEXT | | ER NO. | SYM | REVISIONS | | DATE | BY | CHK | APPD |
| TOLERANCES (UNLESS OTHERWISE SPECIFIED) DECIMAL X ± .1 DECIMAL .XX ± .06 DECIMAL .XXX ± .030 ANGULAR ± 1° HOLES: .50 DIA AND LESS: ± .007 .51 DIA AND GREATER: ± .01 REMOVE ALL SHARP BURRS & SHARP CORNERS THAT MIGHT AFFECT ASSEMBLY, APPEARANCE, OR OPERATION OF OUR PRODUCTS. | | DRAWN: | ML | DATE: | 3/22/2018 |  HUTCHENS INDUSTRIES, INC. SPRINGFIELD, MISSOURI | | | |
| | | CHECKED: | JAJ | DATE: | 10/4/2018 | | | | |
| | | APPROVED: | RSB | DATE: | 10/4/2018 | | | | |
| | | MFG APPL: | N/A | DATE: | XX/XX/XX | | | | |
| | | ER: | 2018044 | DATE: | 10/5/2018 | | | | |
| PROJECT OR FILE REFERENCE NO. | | PROJ#: 20180400 | | EPR#: 20180400-01 | | TITLE: INSTALLATION PROCEDURE FOR 29571-04, -05 KIT | | | |
| SCALE: | | D SIZE - 1/2 | | B SIZE - 1/4 | | | | | |