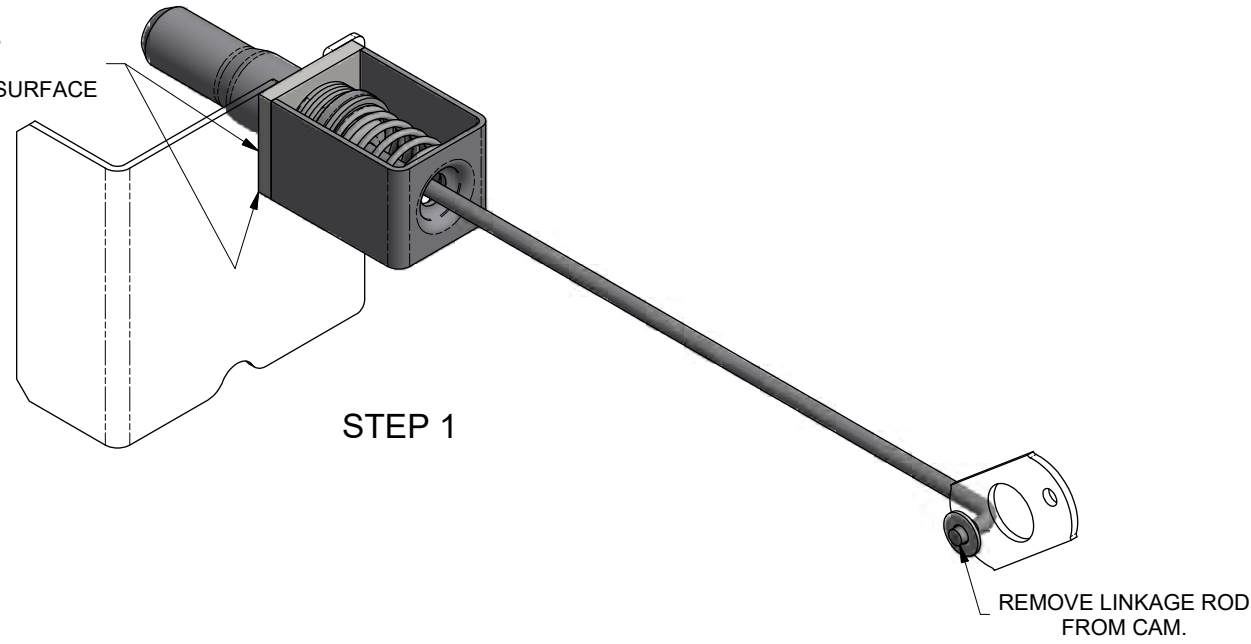


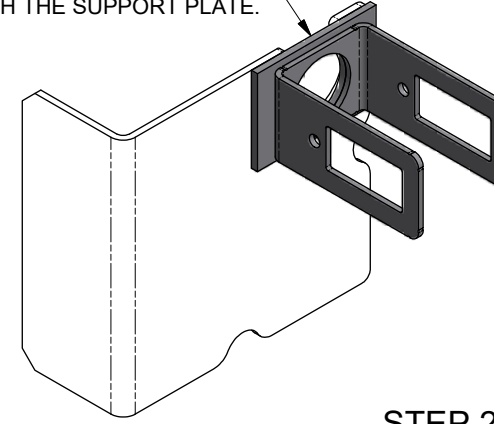
REMOVE WELDS AND CLEAN SUPPORT PLATE SURFACE



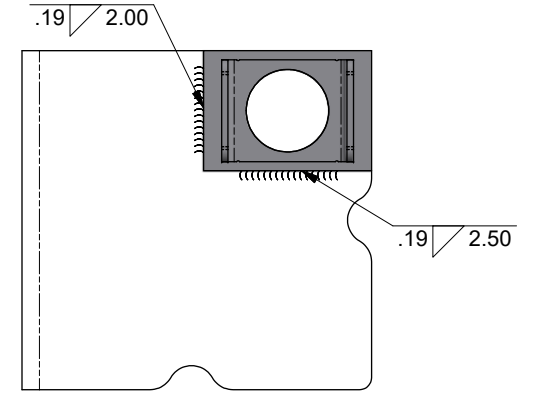
STEP 1

REMOVE LINKAGE ROD FROM CAM.

POSITION THE SPRING CAGE TO BE FLUSH WITH THE SUPPORT PLATE.

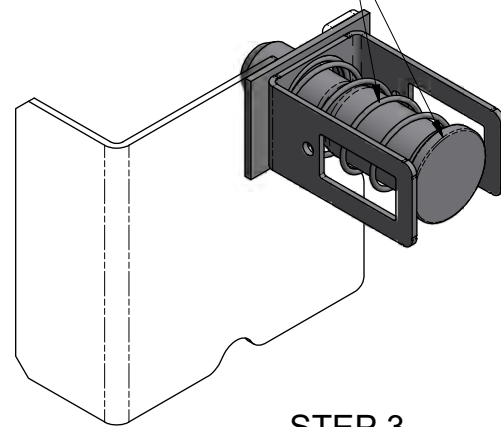


STEP 2



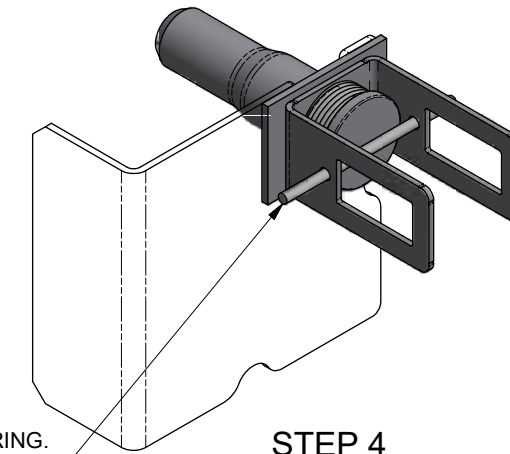
ALLOW WELDS TO COOL BEFORE STEP 3.

INSTALL THE PIN RETRACTION SPRING AND THE LOCK PIN



STEP 3

COMPRESS THE LOCK PIN AND RETRACTION SPRING. INSERT A RETAINER (ROD, SCREWDRIVER, ETC.) THROUGH THE PIN CAGE HOLES.

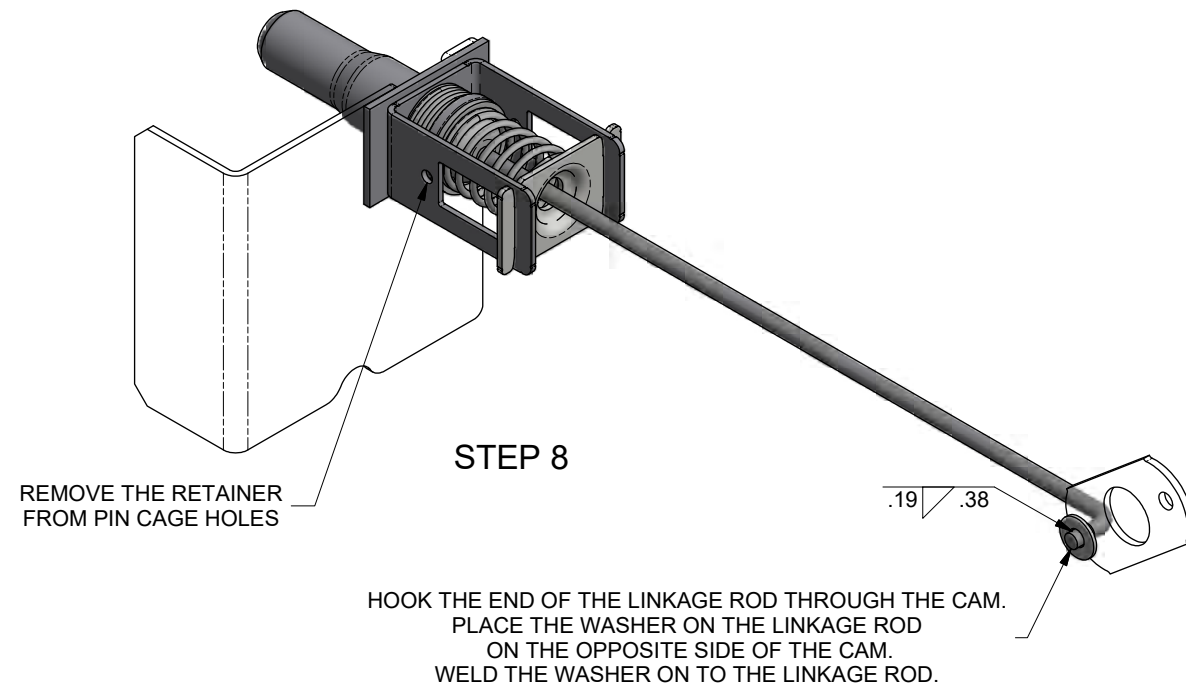
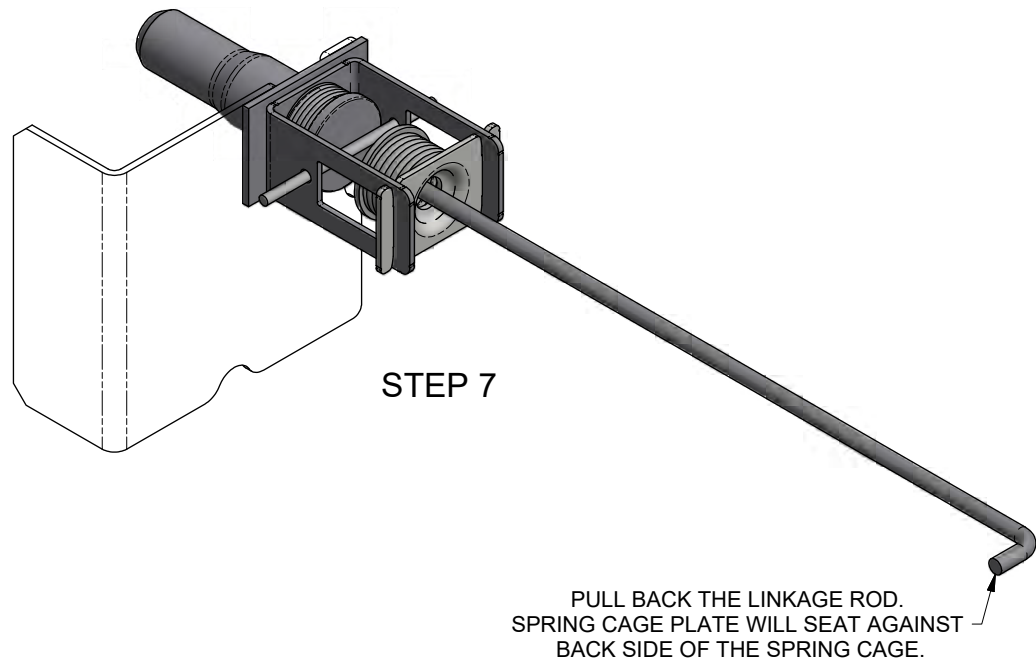
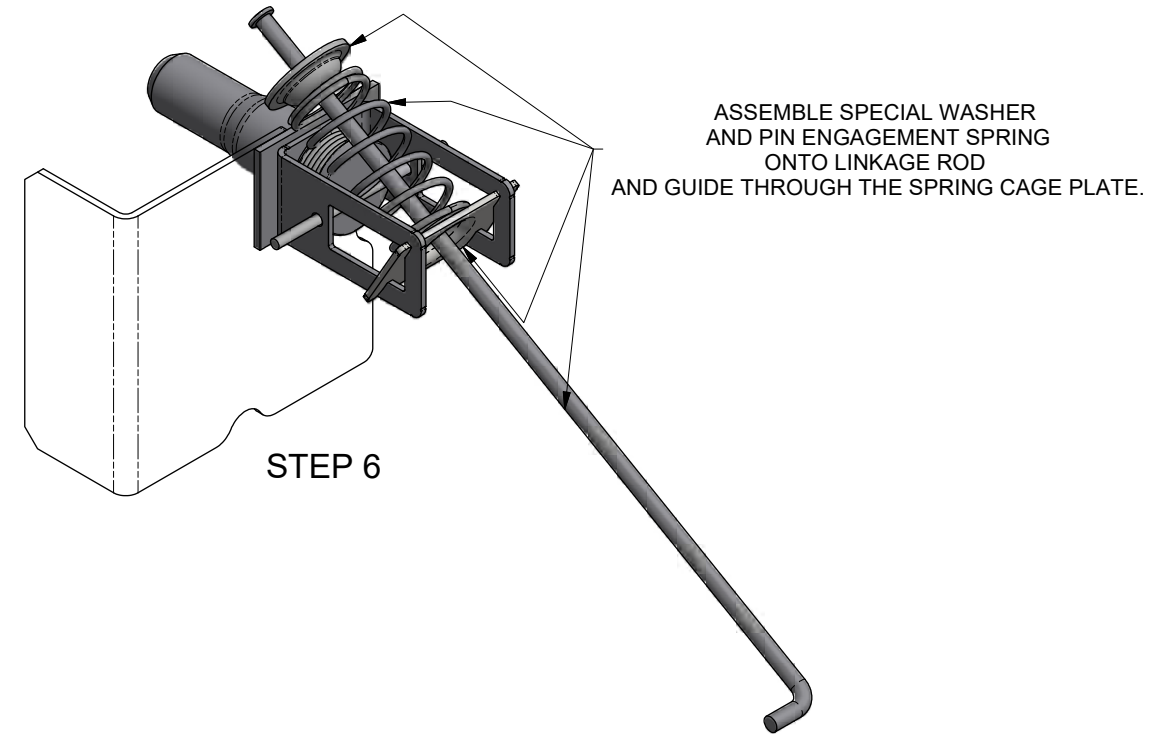
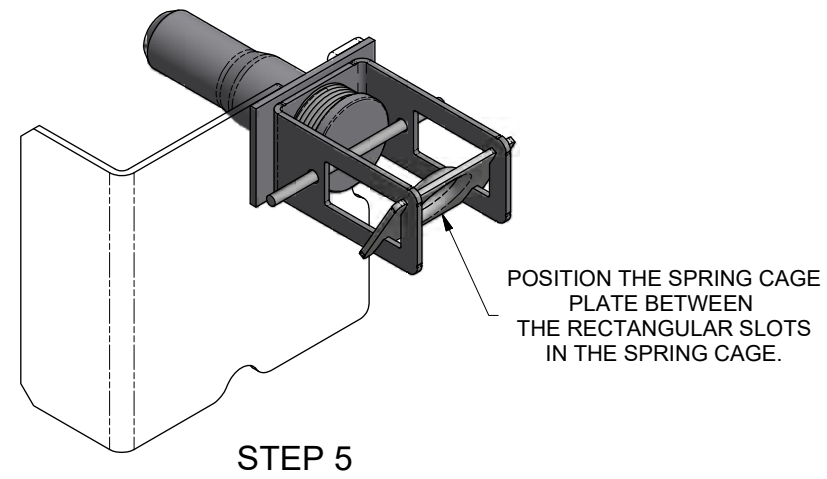


STEP 4


3. MAKE SURE LOCK PINS EXTEND AND FULLY RETRACT BEFORE PLACING SLIDER IN SERVICE.
2. SLIDER MODEL: MERITOR RHP 11.
1. INSTALLATION PROCEDURE FOR KIT 29571-02.

ER NO.	SYM	DATE	BY	CHK	APPD
ER: 2018044 <td>ML <td>3/22/2018 <td>JAJ <td>RSB <td></td> </td></td></td></td>	ML <td>3/22/2018 <td>JAJ <td>RSB <td></td> </td></td></td>	3/22/2018 <td>JAJ <td>RSB <td></td> </td></td>	JAJ <td>RSB <td></td> </td>	RSB <td></td>	
<p>PROJECT OR FILE REFERENCE NO. PROJ#: 20180400 EPR#: 20180400-01</p>					
<p>SCALE: D SIZE - 1/2 B SIZE - 1/4</p>					
<p>REVISIONS</p>					
<p>DATE BY CHK APPD</p>					
<p>29718</p>					
<p>1 OF 2</p>					
<p>SHEET 1 OF 2</p>					
<p>DRAWING NO. 29718</p>					
<p>HUTCH HUTCHENS INDUSTRIES, INC. SPRINGFIELD, MISSOURI</p>					
<p>INSTALLATION PROCEDURE FOR 29571-02 KIT</p>					

This confidential drawing is the property of Hutchens Industries, Hutchens Industries makes no warranties regarding the information on this document. Nothing herein may be transmitted or disclosed in whole or in part to other parties. The recipient of this drawing agrees not to use the information for manufacturing, nor will they modify, distribute, reverse engineer, or create derivative works based on the information contained on this print without the prior written permission of Hutchens Industries. The recipient agrees not to make copies of the document or reproduce in any manner the information in the document and to return it to Hutchens Industries upon request. Any use of this document is acceptance of the terms stated above.



3. MAKE SURE LOCK PINS EXTEND AND FULLY RETRACT BEFORE PLACING SLIDER IN SERVICE.
2. SLIDER MODEL: MERITOR RHP 11.
1. INSTALLATION PROCEDURE FOR KIT 29571-02.

NEXT ASSY: NEXT		ER NO.	SYM	REVISIONS		DATE	BY	CHK	APPD
TOLERANCES (UNLESS OTHERWISE SPECIFIED)		DRAWN:	ML	DATE:	3/22/2018	 HUTCHENS INDUSTRIES, INC. SPRINGFIELD, MISSOURI			
DECIMAL .X ± .1		CHECKED:	JAJ	DATE:	10/4/2018				
DECIMAL .XX ± .06		APPROVED:	RSB	DATE:	10/4/2018				
DECIMAL .XXX ± .030		MFG APPL:	N/A	DATE:	XX/XX/XX				
ANGULAR ± 1°		ER:	2018044	DATE:	10/5/2018				
HOLES:		PROJECT OR FILE REFERENCE NO.		TITLE:		INSTALLATION PROCEDURE FOR 29571-02 KIT			
.50 DIA AND LESS: ± .007		PROJ#: 20180400		EPR#: 20180400-01		SCALE:		SHEET 2 OF 2	
.51 DIA AND GREATER: ± .01		D SIZE - 1/2		B SIZE - 1/4		DRAWING NO.:		29718	
REMOVE ALL SHARP BURRS & SHARP CORNERS THAT MIGHT AFFECT ASSEMBLY, APPEARANCE, OR OPERATION OF OUR PRODUCTS.		D		REV.:		-		2 OF 2	

This confidential drawing is the property of Hutchens Industries, Hutchens Industries makes no warranties regarding the information on this document. Nothing herein may be transmitted or disclosed in whole or in part to other parties. The recipient of this drawing agrees not to use the information for manufacturing, nor will they modify, distribute, reverse engineer, or create derivative works based on the information contained on this print without the prior written permission of Hutchens Industries. The recipient agrees not to make copies of the document or reproduce in any manner the information in the document and to return it to Hutchens Industries upon request. Any use of this document is acceptance of the terms stated above.

DRAWING NO. 29718