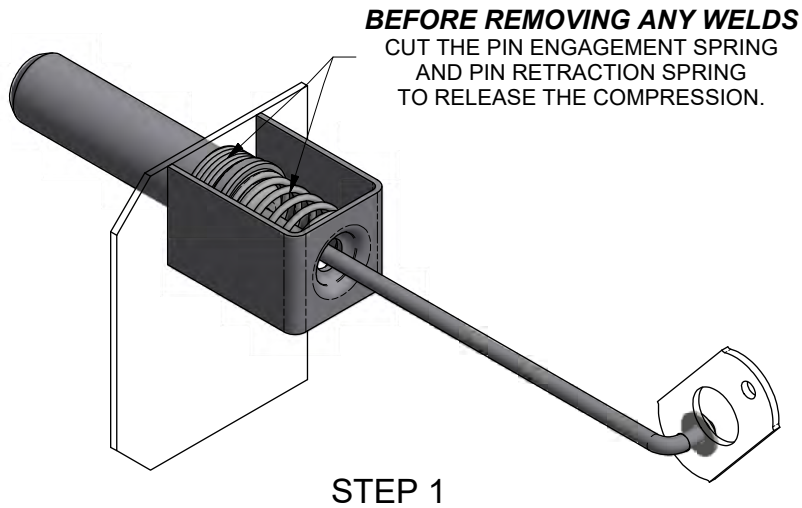
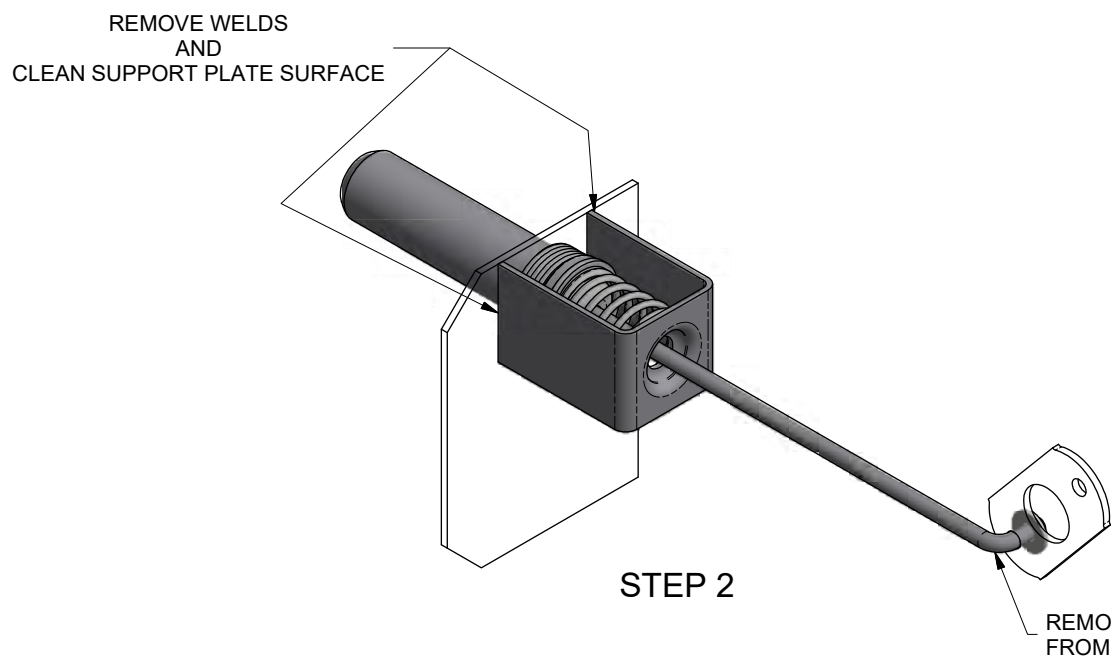


This confidential drawing is the property of Hutchens Industries. Hutchens Industries makes no warranties regarding the information on this document. Nothing herein may be transmitted or disclosed in whole or in part to other parties. The recipient of this drawing agrees not to use the information for manufacturing, nor will they modify, distribute, reverse engineer, or create derivative works based on the information contained on this print without the prior written permission of Hutchens Industries. The recipient agrees not to make copies of the document or reproduce in any manner the information in the document and to return it to Hutchens Industries upon request. Any use of this document is acceptance of the terms stated above.

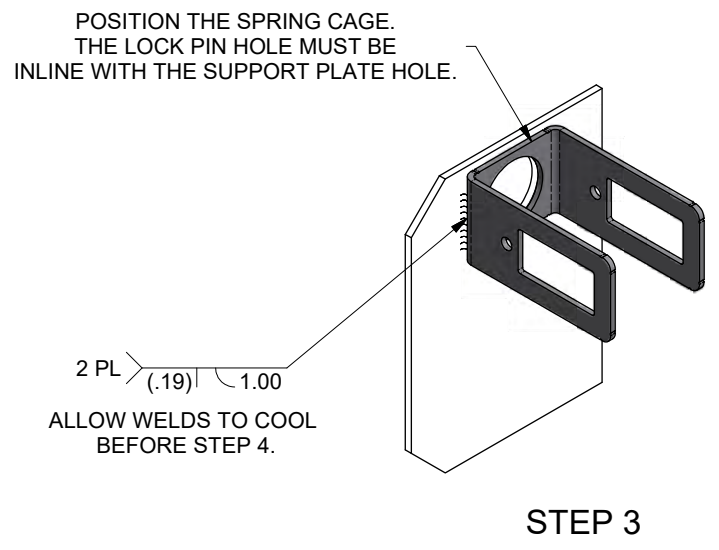
DRAWING NO. 29801 REV. 1 OF 2



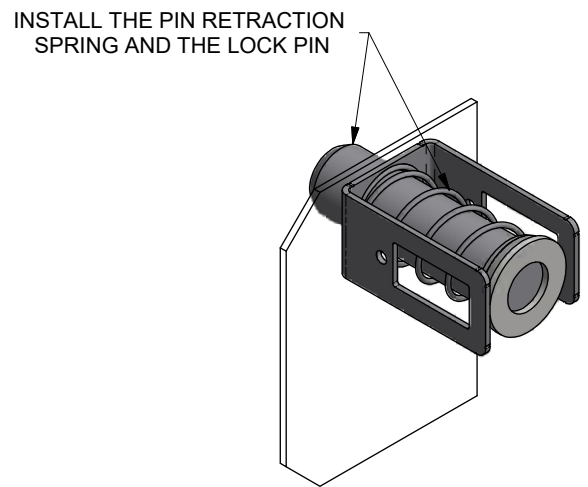
STEP 1



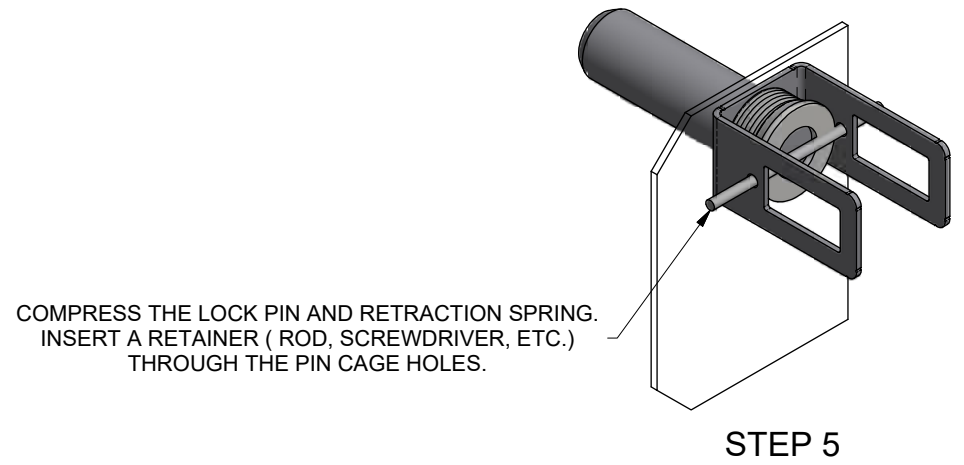
STEP 2



STEP 3



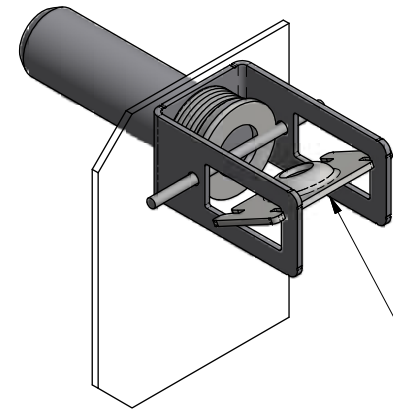
STEP 4



STEP 5

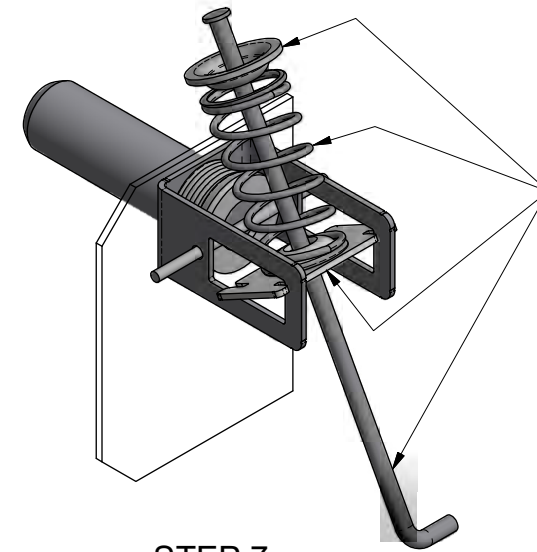
3. MAKE SURE LOCK PINS EXTEND AND FULLY RETRACT BEFORE PLACING SLIDER IN SERVICE.
2. SLIDER MODEL: DANA SLIDES SR1VK200/201.
1. INSTALLATION PROCEDURE FOR KIT 29558-07.

NEXT ASSY: NEXT		ER NO.	SYM	DATE	BY	CHK	APPD
TOLERANCES (UNLESS OTHERWISE SPECIFIED) DECIMAL .X ± .1 DECIMAL .XX ± .06 DECIMAL .XXX ± .030 ANGULAR ± 1° HOLES: .50 DIA AND LESS: ± .007 .51 DIA AND GREATER: ± .01 REMOVE ALL SHARP BURRS & SHARP CORNERS THAT MIGHT AFFECT ASSEMBLY, APPEARANCE, OR OPERATION OF OUR PRODUCTS.		DRAWN:	ML	DATE:	3/22/2018		
		CHECKED:	JAJ	DATE:	10/4/2018		
		APPROVED:	RSB	DATE:	10/4/2018	HUTCHENS INDUSTRIES, INC. SPRINGFIELD, MISSOURI	
		MFG APPL:	N/A	DATE:	XX/XX/XX		
		ER:	2018044	DATE:	10/5/2018		
PROJECT OR FILE REFERENCE NO.		PROJ#:		EPR#:		TITLE:	
		20180400		20180400-01		INSTALLATION PROCEDURE FOR 29558-07 KIT	
SCALE:		D SIZE - 1/2		SHEET 1 OF 2		REV.	
		B SIZE - 1/4		D		1 OF 2	
				DRAWING NO.:		29801	



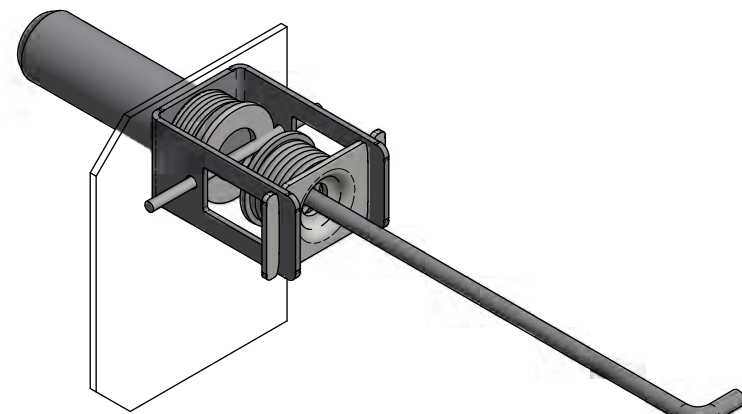
POSITION THE SPRING CAGE PLATE BETWEEN THE RECTANGULAR SLOTS IN THE SPRING CAGE.

STEP 6



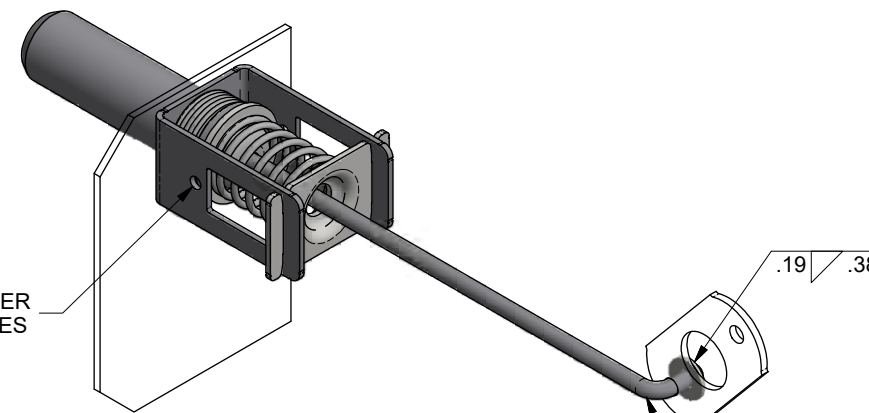
ASSEMBLE SPECIAL WASHER AND PIN ENGAGEMENT SPRING ONTO LINKAGE ROD AND GUIDE THROUGH THE SPRING CAGE PLATE.

STEP 7



PULL BACK THE LINKAGE ROD. SPRING CAGE PLATE WILL SEAT AGAINST BACK SIDE OF THE SPRING CAGE.

STEP 8




REMOVE THE RETAINER FROM PIN CAGE HOLES

.19 .38

HOOK THE END OF THE LINKAGE ROD THROUGH THE CAM. PLACE THE WASHER ON THE LINKAGE ROD ON THE OPPOSITE SIDE OF THE CAM. WELD THE WASHER ON TO THE LINKAGE ROD.

STEP 9

3. MAKE SURE LOCK PINS EXTEND AND FULLY RETRACT BEFORE PLACING SLIDER IN SERVICE.
2. SLIDER MODEL: DANA SLIDES SR1VK200/201.
1. INSTALLATION PROCEDURE FOR KIT 29558-07.

NEXT ASSY: NEXT		ER NO.	SYM	DATE	BY	CHK	APPD	
TOLERANCES (UNLESS OTHERWISE SPECIFIED) DECIMAL .X ± .1 DECIMAL .XX ± .06 DECIMAL .XXX ± .030 ANGULAR ± 1° HOLES: .50 DIA AND LESS: ± .007 .51 DIA AND GREATER: ± .01 REMOVE ALL SHARP BURRS & SHARP CORNERS THAT MIGHT AFFECT ASSEMBLY, APPEARANCE, OR OPERATION OF OUR PRODUCTS.		DRAWN:	ML	DATE:	3/22/2018	 HUTCHENS INDUSTRIES, INC. SPRINGFIELD, MISSOURI		
		CHECKED:	JAJ	DATE:	10/4/2018			
		APPROVED:	RSB	DATE:	10/4/2018			
		MFG APPL:	N/A	DATE:	XX/XX/XX			
		ER:	2018044	DATE:	10/5/2018	TITLE: INSTALLATION PROCEDURE FOR 29558-07 KIT		
		PROJECT OR FILE REFERENCE NO.:	PROJ#: 20180400 EPR#: 20180400-01	SCALE:	D SIZE - 1/2 B SIZE - 1/4			SHEET 2 OF 2

This confidential drawing is the property of Hutchens Industries, Hutchens Industries makes no warranties regarding the information on this document. Nothing herein may be transmitted or disclosed in whole or in part to other parties. The recipient of this drawing agrees not to use the information for manufacturing, nor will they modify, distribute, reverse engineer, or create derivative works based on the information contained on this print without the prior written permission of Hutchens Industries. The recipient agrees not to make copies of the document or reproduce in any manner the information in the document and to return it to Hutchens Industries upon request. Any use of this document is acceptance of the terms stated above.
 DRAWING NO. 29801
 REV. 2 OF 2