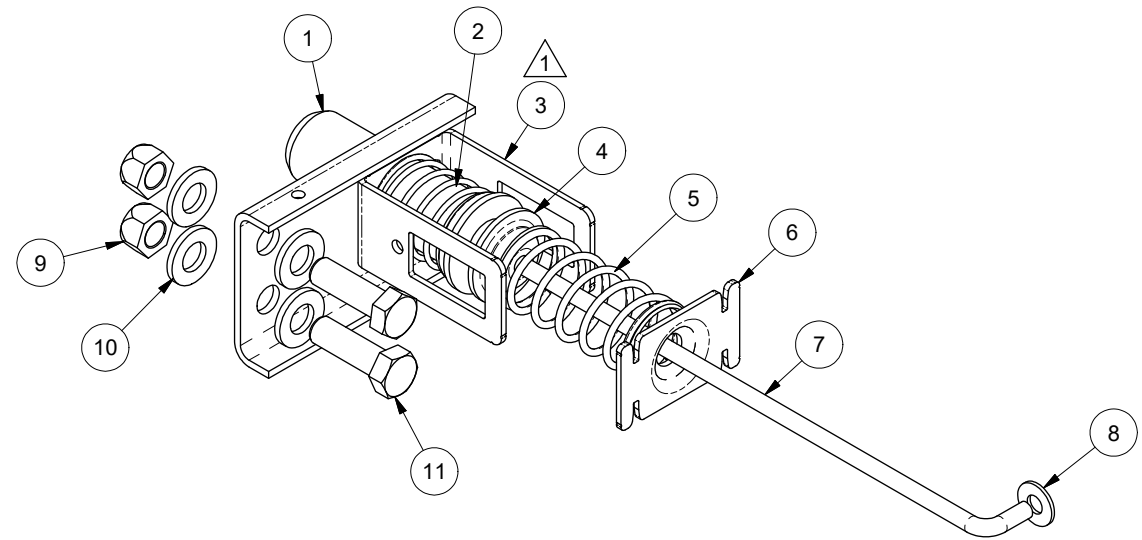
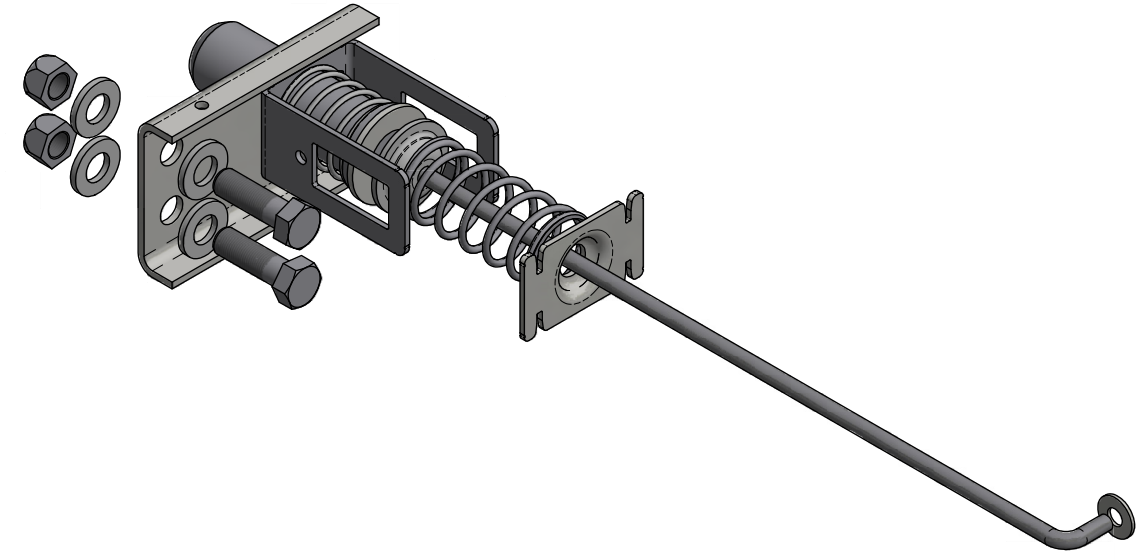


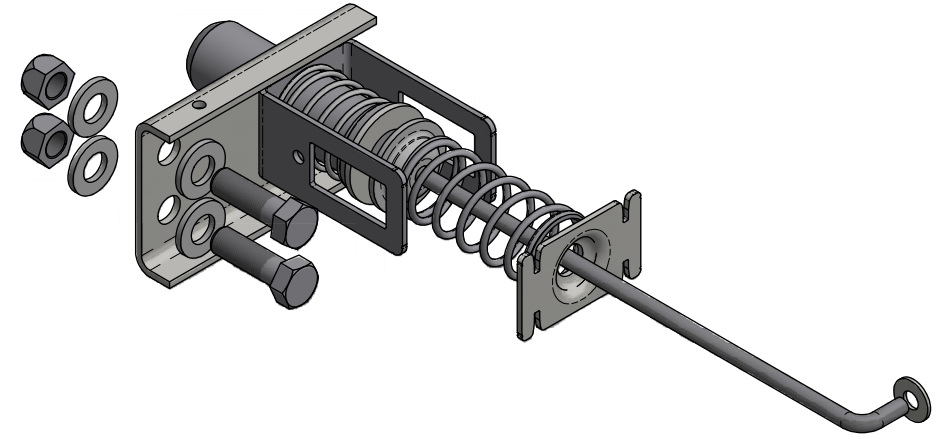
PART NUMBER	LINKAGE ROD LG	SLIDER MODEL	WEIGHT
29574-01	13.83	44" IBC Z-FRAME	6.99#
29574-02	19.03	44" IBC Z-FRAME	7.15#
29574-03	13.10	38" IBC Z-FRAME	6.97#



EZ PULL SUBASSEMBLY SERVICE KIT NO.: 29574-01
 INSTALLATION PROCEDURE DRAWING NO.: 29719
 REF EZ PULL SUBASSEMBLY PART NO.:20852-01



EZ PULL SUBASSEMBLY SERVICE KIT NO.: 29574-02
 INSTALLATION PROCEDURE DRAWING NO.: 29719
 REF EZ PULL SUBASSEMBLY PART NO.:20852-02



EZ PULL SUBASSEMBLY SERVICE KIT NO.: 29574-03
 INSTALLATION PROCEDURE DRAWING NO.: 29719
 REF EZ PULL SUBASSEMBLY PART NO.:20852-03

2. PARTS SHALL BE SHIPPED UNASSEMBLED.

1. ITEM 3 SPRING CAGE SHALL BE BOLTED ON TO THE SIDE RAIL PRIOR TO ASSEMBLY.
 SEE INSTALLATION PROCEDURE DRAWING FOR DETAIL.

ER NO.	SYM	REVISIONS	DATE	BY	CHK	APPD
2022134	B	ADDED ASSY 29574-03 FOR REPLACEMENT TO THE EZ PULL SUBASSEMBLY 20852-03.	11/22	JAJ	BWH	DAC
2020189	A	REVISED TITLE, WAS "1-BEAM SLIDER".	09/20	BWH	JAJ	RSB

DRAWN: ML CHECKED: JAJ APPROVED: RSB MFG APPL: N/A ER: 2018037 PROJECT OR FILE REFERENCE NO.: PROJ#: 20180400 EPR#: 20180400-01 SCALE: D SIZE - HALF B SIZE - 1/4	DATE: 3/9/2018 DATE: 9/20/2018 DATE: 9/20/2018 DATE: XX/XX/XX DATE: 9/20/2018	HUTCHENS INDUSTRIES, INC. SPRINGFIELD, MISSOURI	TITLE: EZ PULL SUBASSEMBLY SERVICE KIT FOR 18818-03 LOCK PIN WILSON PROPRIETARY SLIDERS	SHEET 1 OF 2 D 29574	REV. 1 OF 2 B
---	---	--	---	----------------------------	------------------

This confidential drawing is the property of Hutchens Industries, Hutchens Industries makes no warranties regarding the information on this document. Nothing herein may be transmitted or disclosed in whole or in part to other parties. The recipient of this drawing agrees not to use the information for manufacturing, nor will they modify, distribute, reverse engineer, or create derivative works based on the information contained on this print without the prior written permission of Hutchens Industries. The recipient agrees not to make copies of the document or reproduce in any manner the information in the document and to return it to Hutchens Industries upon request. Any use of this document is acceptance of the terms stated above.

USE WITH MASTER DRAWING :													
ASSEMBLY DESCRIPTION		ASSY NO.											
EZP SUBASSY SERVICE KIT I-BEAM SLIDER -13.83 LG ROD		29574-01											
I-BEAM SLIDER -19.03 LG ROD		29574-02											
I-BEAM SLIDER -13.10 LG ROD		29574-03											
ITEM	PART DESCRIPTION	PART NO.	QUANTITY										
1	EZP 2 LOCK PIN 5.11 LG - W/.13 SHIM	29679-01									1	1	1
2	PIN RETRACTION SPRING	18820-01									1	1	1
3	EZ PULL PIN KIT CAGE ASSY	29546-01									1	1	1
4	WASHER - SPCL	18815-01									1	1	1
5	PIN ENGAGEMENT SPRING	18819-01									1	1	1
6	SPRING CAGE PLATE FOR NO WELD CAGE	27386-01									1	1	1
7	LINKAGE ROD EZ PULL - 13.83 LG	23334-09									0	0	1
7	LINKAGE ROD EZ PULL - 19.03 LG	23334-11									0	1	0
7	LINKAGE ROD EZ PULL - 13.10 LG	23334-19									1	0	0
8	3/8 FLAT WASHER	177-00									1	1	1
9	HEX LOCKNUT 5/8-18 UNF, GR C ZINC PLATED	11513-03									2	2	2
10	WASHER - 1/8 X 11/16 I.D. X 1-5/16 O.D.	10273-00									4	4	4
11	HEX BOLT - 5/8-18 UNF X 2 LG ZINC PLATED	11512-03									2	2	2
12	VCI TUBING 6 MIL X 8" WIDE	29870-99									1	1	1
13	29574-01 TAG - EZ PULL SUBASSEMBLY SERVICE KIT	29574-01TAG									0	0	1
13	29574-02 TAG - EZ PULL SUBASSEMBLY SERVICE KIT	29574-02TAG									0	1	0
13	29574-03 TAG - EZ PULL SUBASSEMBLY SERVICE KIT	29574-03TAG									1	0	0

2022134	B	ADDED ASSY 29574-03 FOR 13.10 LG ROD.	11/07/22	JAJ	BWH	DAC
2020189	A	REVISED TITLE, WAS "I-BEAM SLIDER".	09/01/20	BWH	JAJ	RSB
ER NO.	SYM	REVISIONS	DATE	BY	CHK	APPD

DRAWN: ML	DATE: 3/12/2018		HUTCHENS INDUSTRIES, INC. SPRINGFIELD, MISSOURI
CHECKED: JAJ	DATE: 10/4/2018		
APPD: RSB	DATE: 10/4/2018		
MFG APPL: N/A	DATE: XX/XX/XX		
ER: 2018037	DATE: 10/5/2018		

PROJ/REF NO. 20180400 20180400-01	NEXT ASSY NEXT	TITLE: EZ PULL SUBASSEMBLY SERVICE KIT FOR 18818-03 LOCK PIN WILSON PROPRIETARY SLIDERS
SHEET 2 OF 2		SIZE A DRAWING NO.: 29574 REV. B