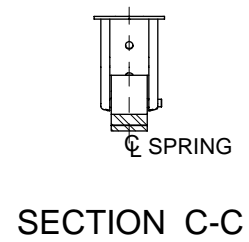
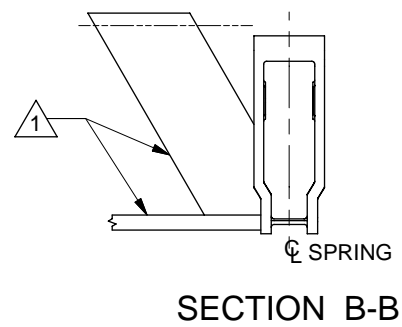
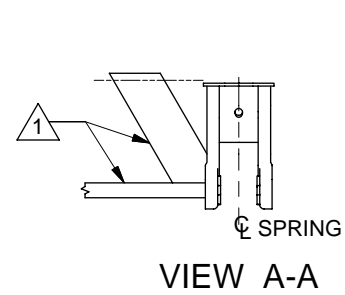
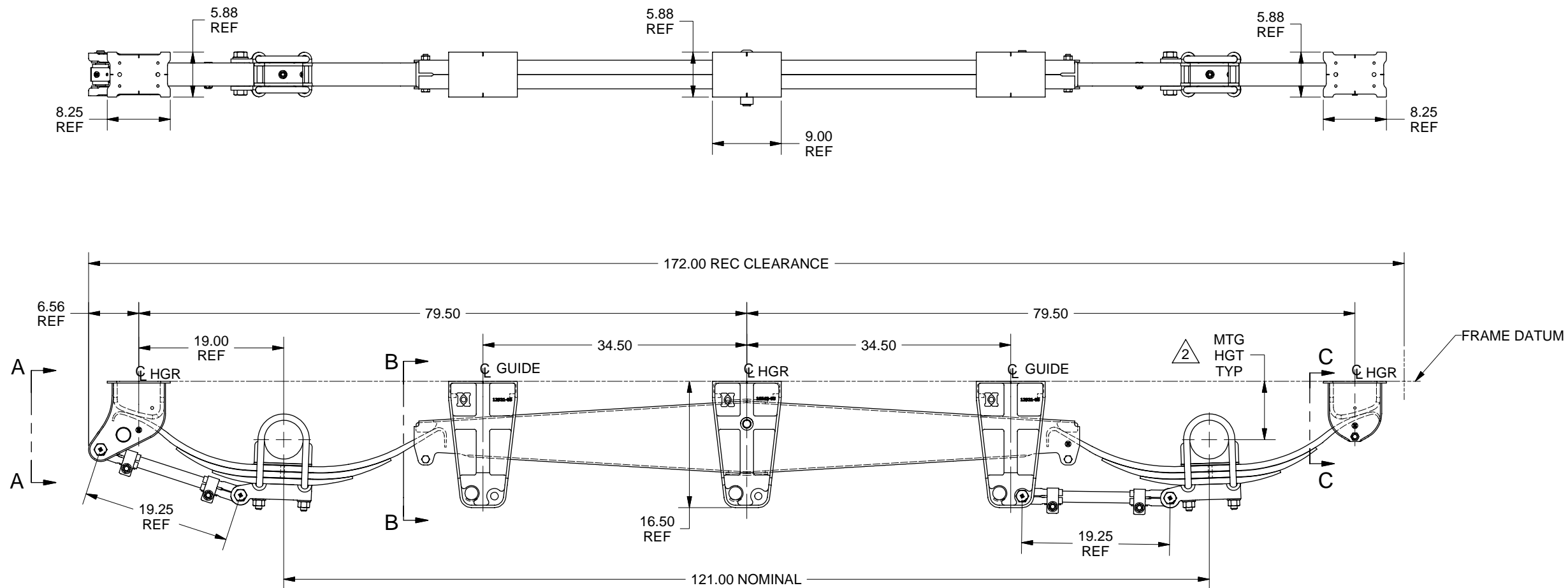


This confidential drawing is the property of Hutchens Industries. Hutchens Industries makes no warranties regarding the information on this document. Nothing herein may be transmitted or disclosed in whole or in part to other parties. The recipient of this drawing agrees not to use the information for manufacturing, not to modify, distribute, reverse engineer, or create derivative works based on the information contained on this print without the prior written permission of Hutchens Industries. The recipient agrees not to make copies of the document or reproduce in any manner the information in the document and to return it to Hutchens Industries upon request. Any use of this document is acceptance of the terms stated above.

DRAWING NO.
88-1201-02

REV.
A
1 OF 1



3. THIS SUSPENSION ASSEMBLY SHALL BE LIMITED TO USE WITH HIGH ARCH SPRINGS ONLY.

2. FOR MOUNTING HEIGHT REFER TO HUTCHENS CATALOG.

1. 1.25 PIPE BRACE & LATERAL GUSSET (.173 MIN. MATL) FURNISHED BY INSTALLER.

		A	REDRAWN. REMOVED FLAGGED NOTE 2, MOUNTING HEIGHT.				07/08	JAJ	BWH	RSB
ER NO.	SYM	REVISIONS					DATE	BY	CHK	APPD
DRAWN:		CAU	DATE:	3/25/1994			HUTCHENS INDUSTRIES, INC. SPRINGFIELD, MISSOURI			
CHECKED:		CHK	DATE:	XX/XX/XX						
APPROVED:		APPD	DATE:	XX/XX/XX			LAYOUT DRAWING 9700 WS 121, 5" RD UNDERSLUNG, UNDER MOUNT			
MFG APPL:		MFG	DATE:	XX/XX/XX						
ER:		8845	DATE:	10/3/1988			LAYOUT DRAWING 9700 WS 121, 5" RD UNDERSLUNG, UNDER MOUNT			
PROJECT OR FILE REFERENCE NO.		REC.# 808-4 PROJ.# 88-1200								
SCALE:		D SIZE - 1/8 B SIZE - 1/16		SHEET 1 OF 1		SIZE:	DRAWING NO.		REV.	
						D	88-1201-02		A	