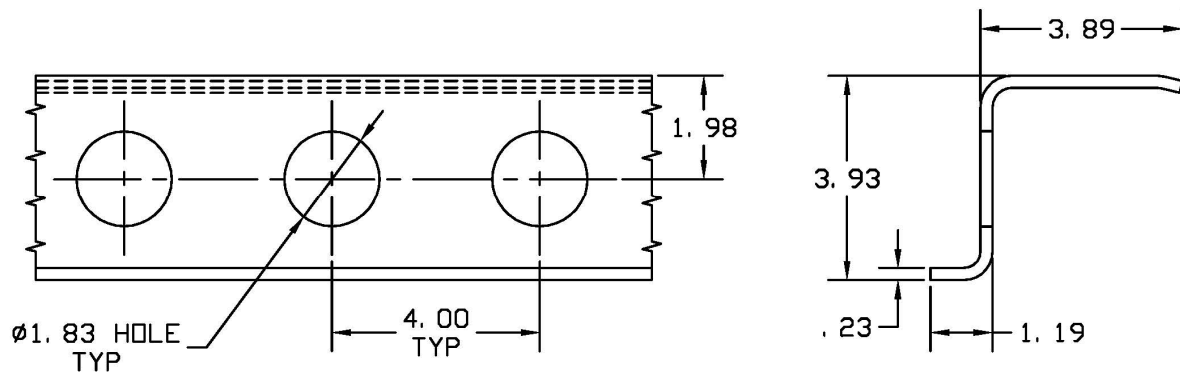


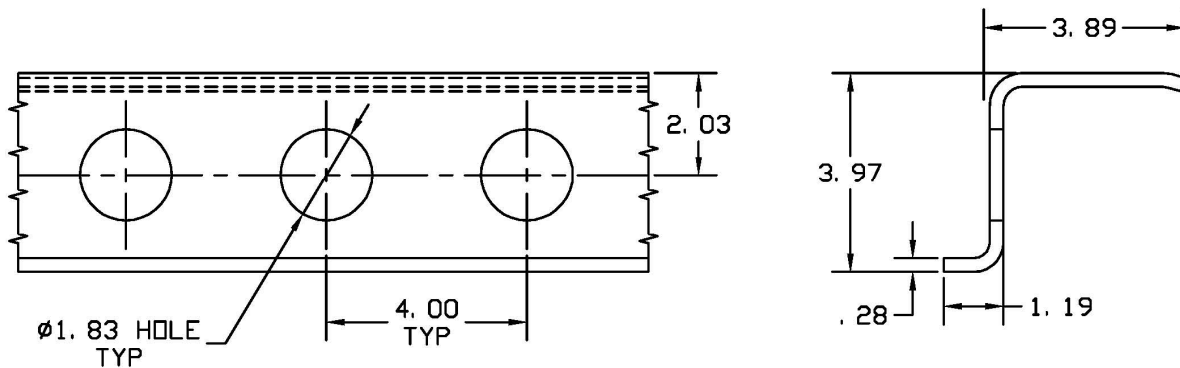
# HUTCHENS INDUSTRIES INC.

## BODY RAIL IDENTIFICATION



PART NO.	APPLICATION	COMMENTS
12713-XX*	8800, 98XX, 8900, 8901, & SERIES 10	MAY BE INTERCHANGED WITH THE 16816 USE LOCATOR BAR 11642

\*DASH NO. DETERMINED BY RAIL LENGTH



PART NO.	APPLICATION	COMMENTS
16816-XX*	8800, 98XX, 8900, 8901, & SERIES 10	MAY BE INTERCHANGED WITH THE 12713 USE LOCATOR BAR 11642

\*DASH NO. DETERMINED BY RAIL LENGTH

BODY RAIL IDENTIFICATION

ER:  
2008118

REV: B

DATE:  
03/22/12

SHEET  
1 OF 8

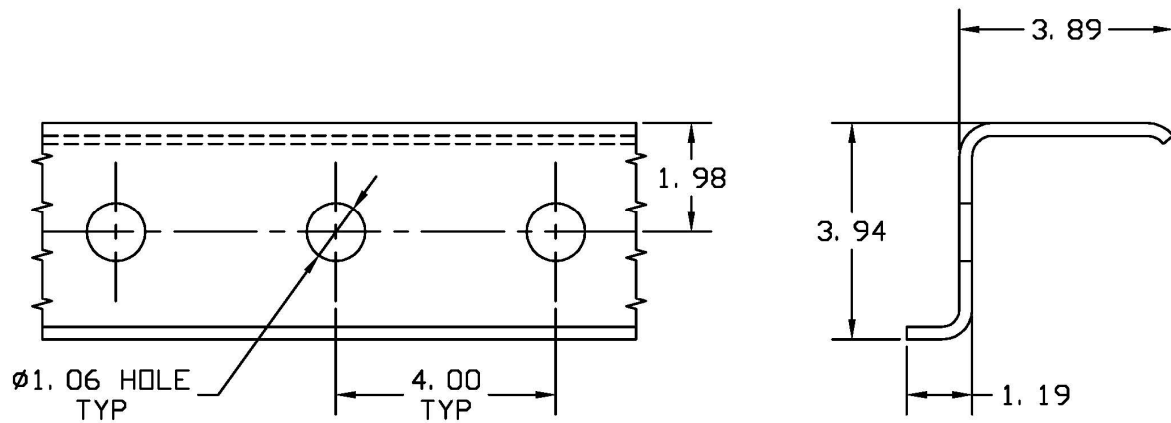
PROJ:  
20089037

REV ER:  
2012056

DRAWING NO.  
25040

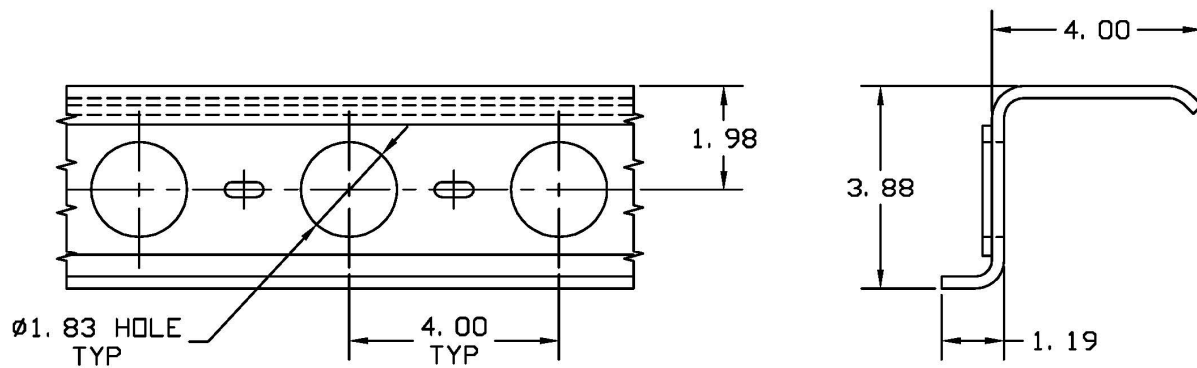
# HUTCHENS INDUSTRIES INC.

## BODY RAIL IDENTIFICATION



PART NO.	APPLICATION	COMMENTS
16718-XX*	9300, & 94XX BOLT IN VAN SLIDES	

\*DASH NO. DETERMINED BY RAIL LENGTH



PART NO.	APPLICATION	COMMENTS
12714	8800 & 8900	OBS. USE 12713

## BODY RAIL IDENTIFICATION

ER:  
2008118

PROJ:  
20089037

REV: B

DATE:  
03/22/12

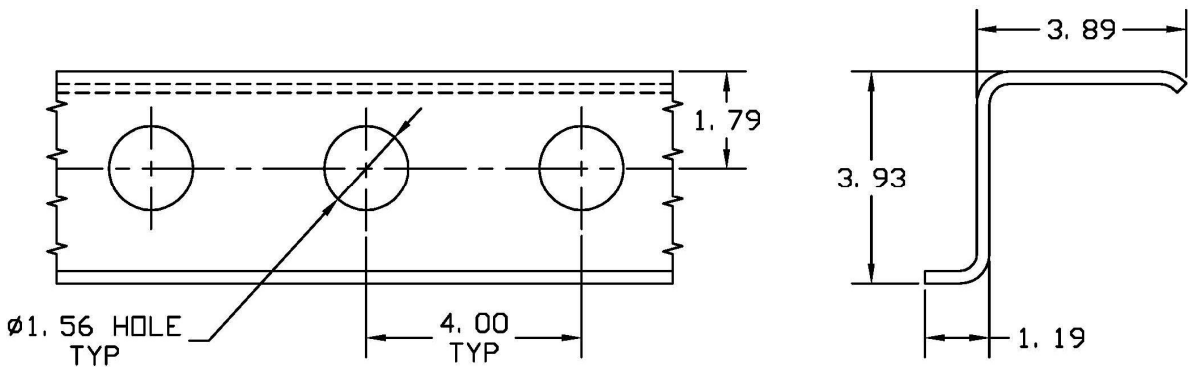
REV ER:  
2012056

SHEET  
2 OF 8

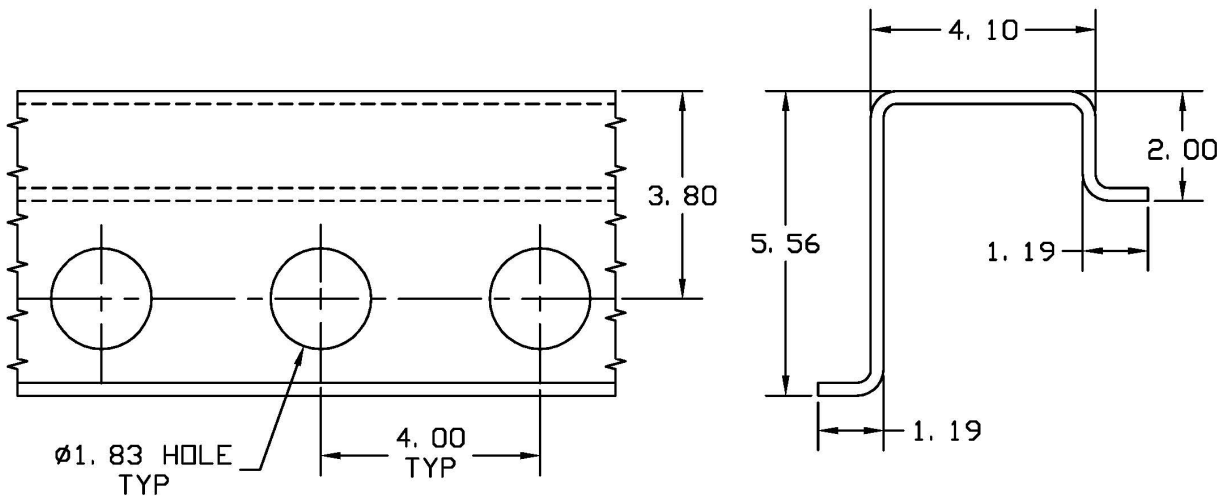
DRAWING NO.  
25040

# HUTCHENS INDUSTRIES INC.

## BODY RAIL IDENTIFICATION



PART NO.	APPLICATION	COMMENTS
19940	9851, & 9861	OBS. TTMA RAIL



PART NO.	APPLICATION	COMMENTS
18150-XX*	8200, 8300	REPLACES 11645, & 3055 USE LOCATOR BAR 11642

\*DASH NO. DETERMINED BY RAIL LENGTH

## BODY RAIL IDENTIFICATION

ER:  
2008118

REV: B

SHEET

3 OF 8

DATE:  
03/22/12

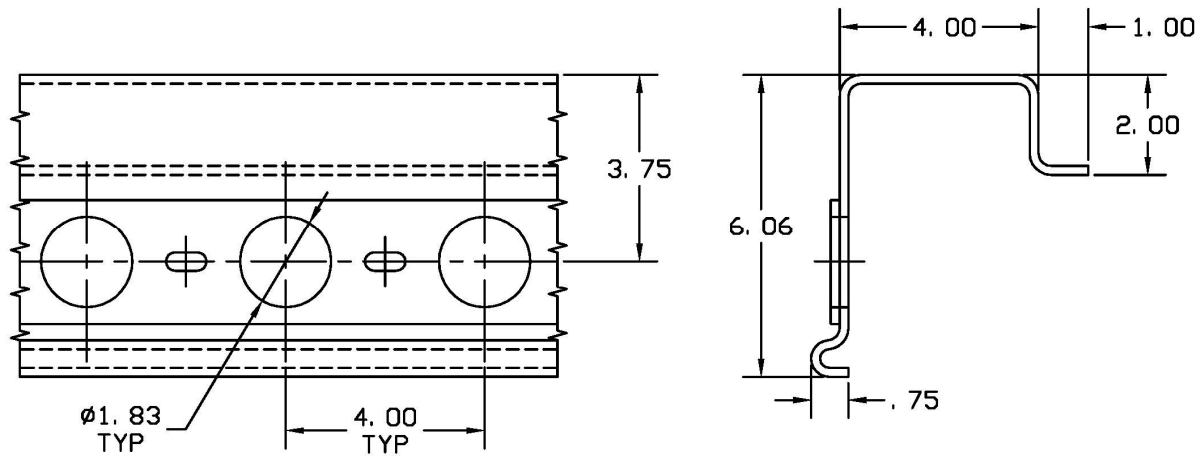
PROJ:  
20089037

REV ER:  
2012056

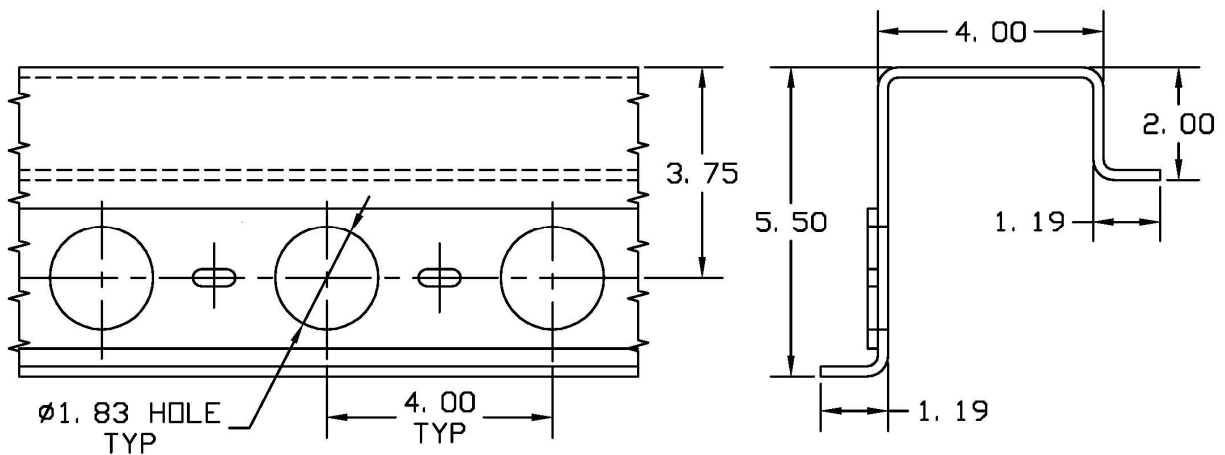
DRAWING NO.  
25040

# HUTCHENS INDUSTRIES INC.

## BODY RAIL IDENTIFICATION



PART NO.	APPLICATION	COMMENTS
11645	8200 & 8300	OBS. USE 18150



PART NO.	APPLICATION	COMMENTS
3055	8000, 8200, & 8300	OBS. USE 18150

## BODY RAIL IDENTIFICATION

ER:  
2008118

PROJ:  
20089037

REV: B

DATE:  
03/22/12

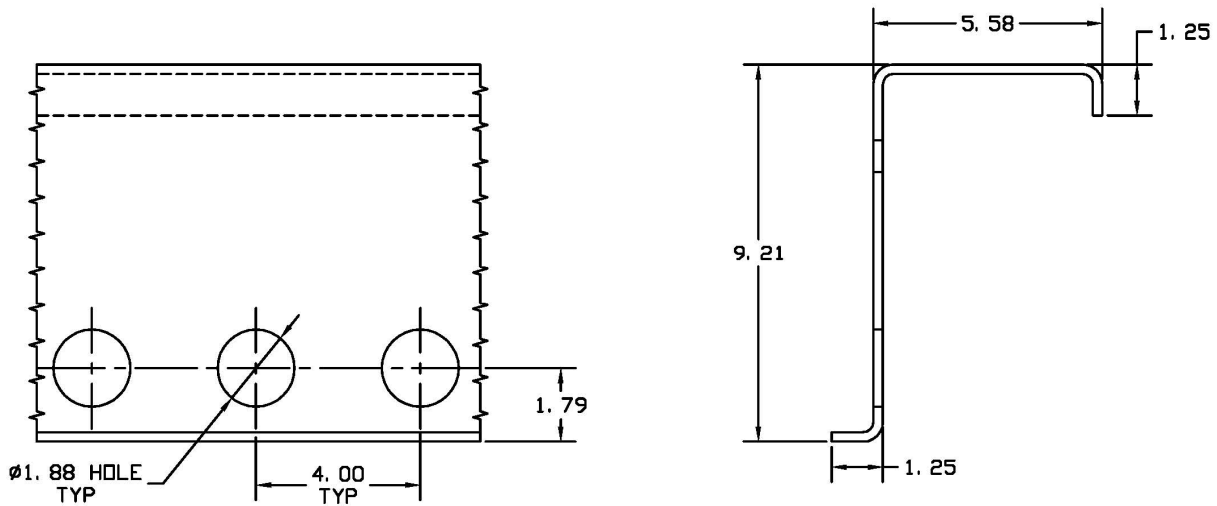
REV ER:  
2012056

SHEET  
4 OF 8

DRAWING NO.  
25040

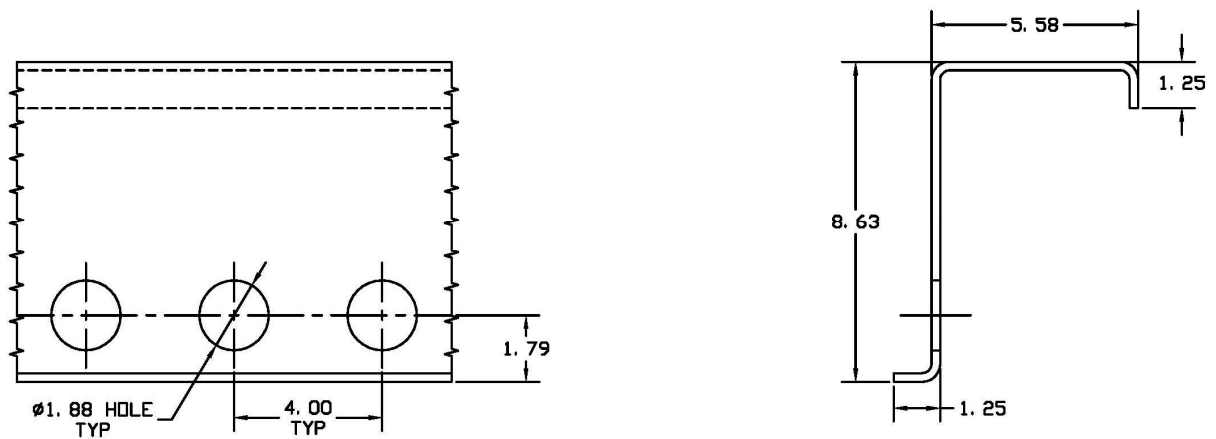
# HUTCHENS INDUSTRIES INC.

## BODY RAIL IDENTIFICATION



PART NO.	APPLICATION	COMMENTS
23324-XX*	11.00 RAMP SERIES	USE LOCATOR BAR 11642

\*DASH NO. DETERMINED BY RAIL LENGTH



PART NO.	APPLICATION	COMMENTS
21382	10.5 HI RAMP SERIES	OBSOLETE

## BODY RAIL IDENTIFICATION

ER:  
2008118

REV: B

DATE:  
03/22/12

SHEET  
5 OF 8

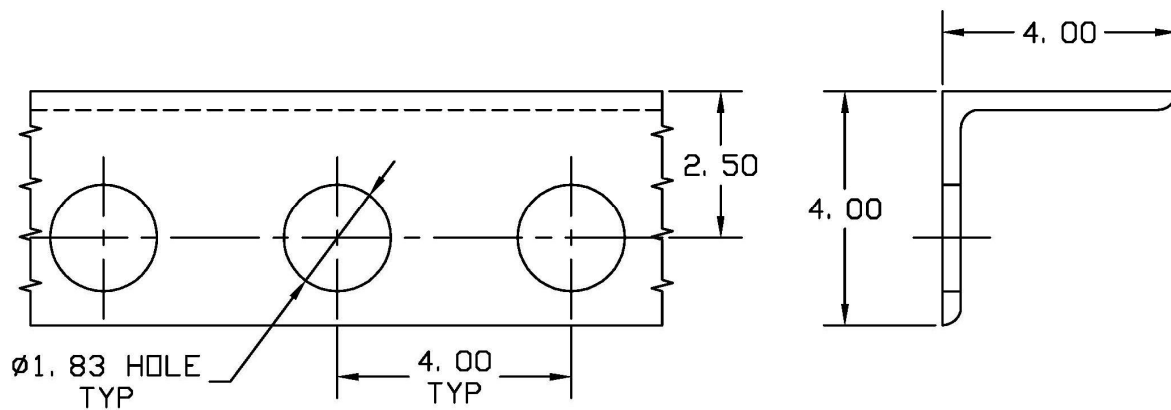
PROJ:  
20089037

REV ER:  
2012056

DRAWING NO.  
25040

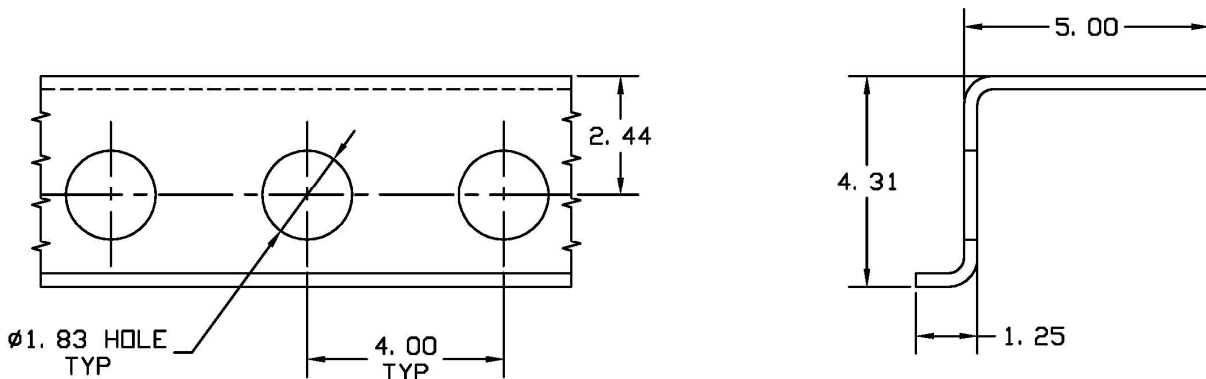
# HUTCHENS INDUSTRIES INC.

## BODY RAIL IDENTIFICATION



PART NO.	APPLICATION	COMMENTS
11831-XX*	11700 FLAT BED W/ INBOARD HOLD DOWNS	USE LOCATOR BAR 11641

\*DASH NO. DETERMINED BY RAIL LENGTH



PART NO.	APPLICATION	COMMENTS
17331-XX*	11700 FLAT BED W/ OUTBOARD HOLD DOWNS	USE LOCATOR BAR 11642

\*DASH NO. DETERMINED BY RAIL LENGTH

BODY RAIL IDENTIFICATION

ER:  
2008118

REV: B

DATE:  
03/22/12

SHEET  
6 OF 8

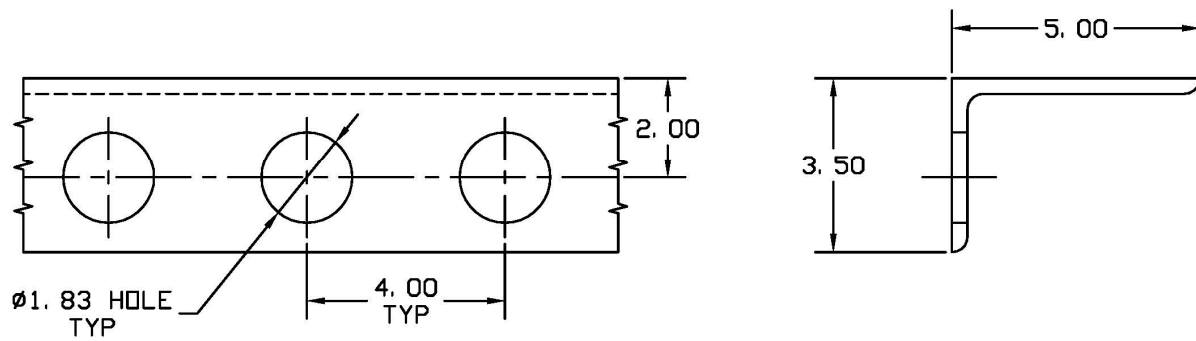
PROJ:  
20089037

REV ER:  
2012056

DRAWING NO.  
25040

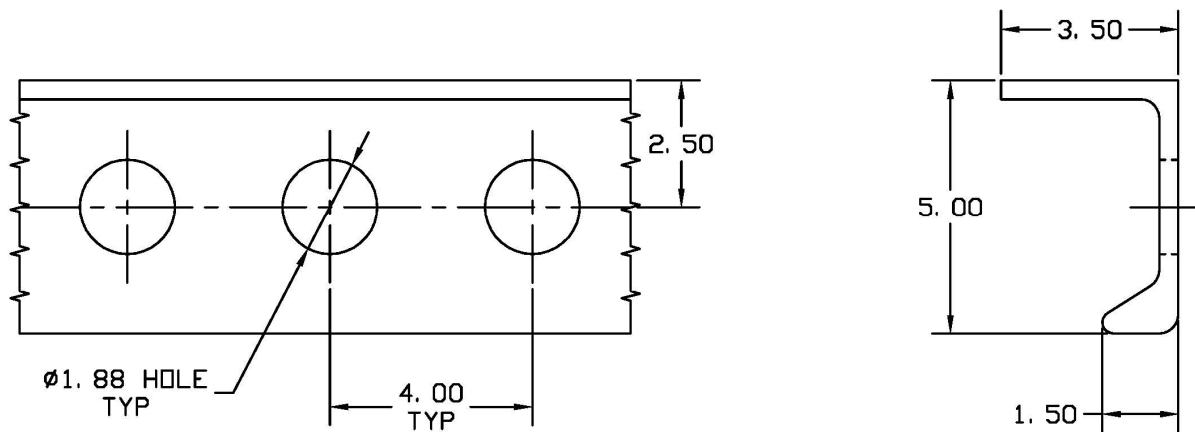
# HUTCHENS INDUSTRIES INC.

## BODY RAIL IDENTIFICATION



PART NO.	APPLICATION	COMMENTS
8178-XX*	8500	USE LOCATOR BAR 11641

\*DASH NO. DETERMINED BY RAIL LENGTH



PART NO.	APPLICATION	COMMENTS
8407	8400	OBSOLETE

## BODY RAIL IDENTIFICATION

ER:  
2008118

REV: B

DATE:  
03/22/12

SHEET  
7 OF 8

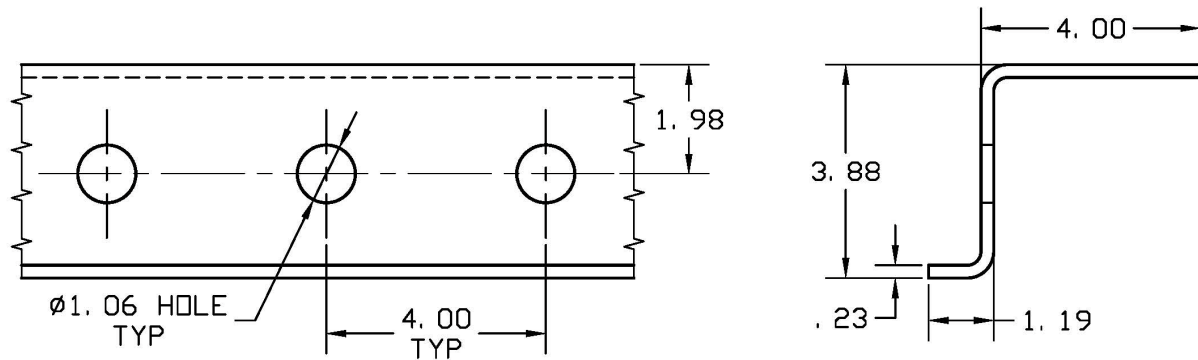
PROJ:  
20089037

REV ER:  
2012056

DRAWING NO.  
25040

# HUTCHENS INDUSTRIES INC.

## BODY RAIL IDENTIFICATION



PART NO.	APPLICATION	COMMENTS
17156-XX*	T/M PRODUCED BOLT-IN FRAME	USE LOCATOR BAR 11642

\*DASH NO. DETERMINED BY RAIL LENGTH

BODY RAIL IDENTIFICATION

ER:  
2008118

REV: B

DATE:  
03/22/12

SHEET  
8 OF 8

PROJ:  
20089037

REV ER:  
2012056

DRAWING NO.  
25040