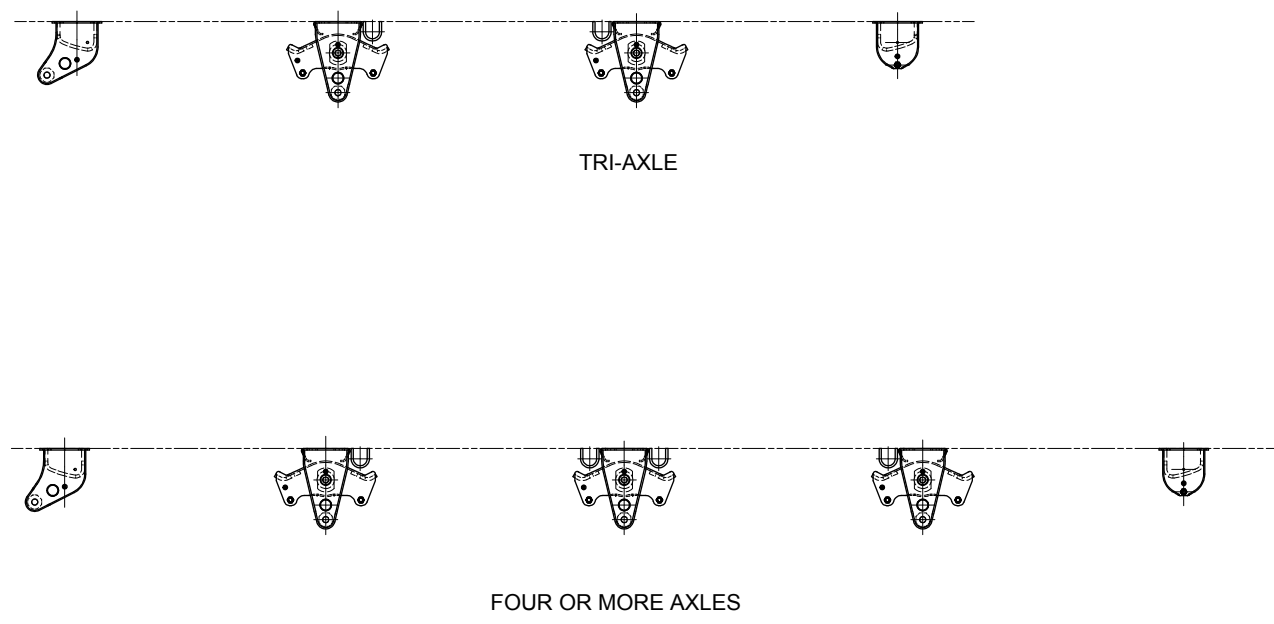
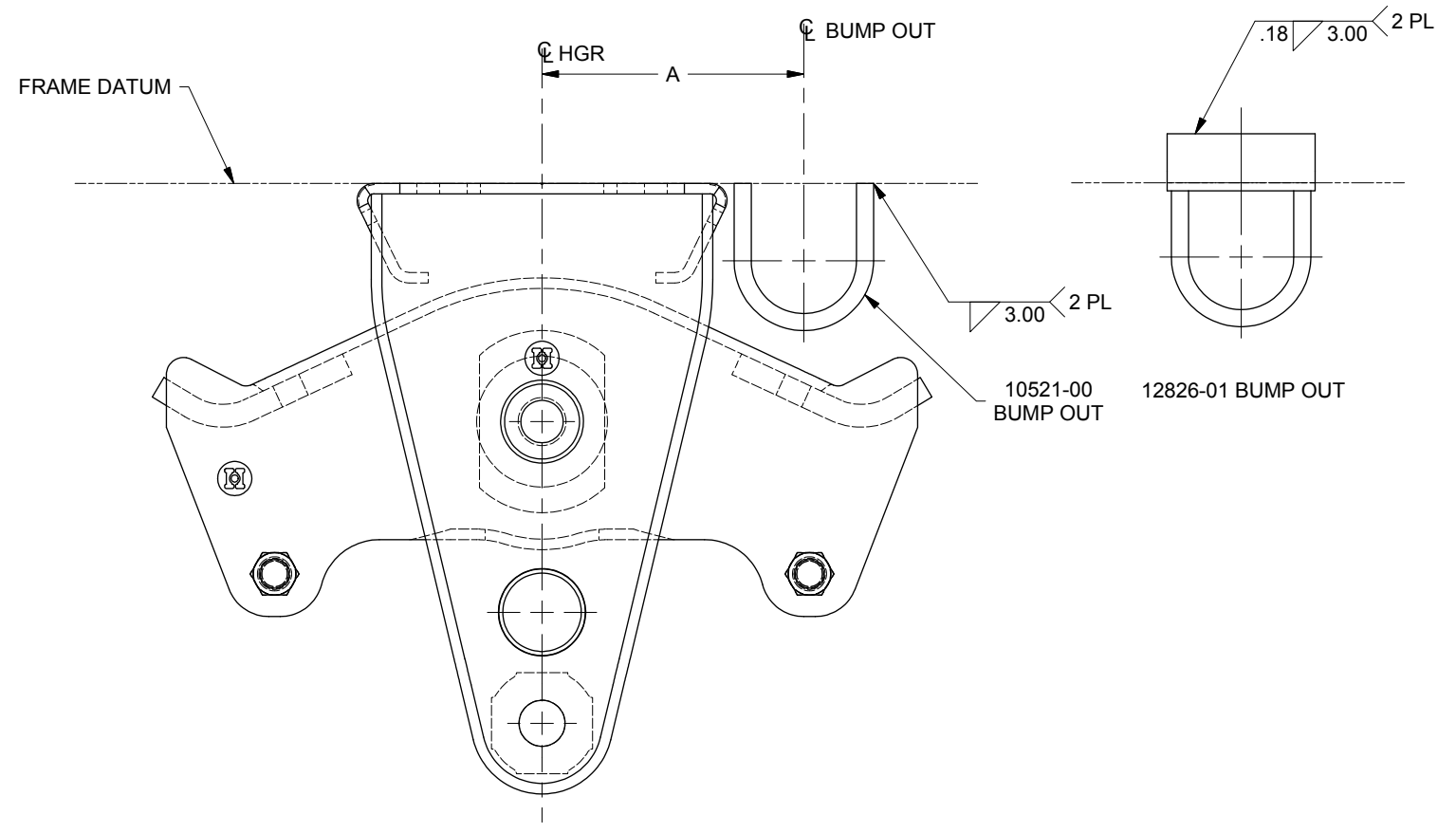


HANGER STYLE	AXLE SPACING	DIM A	BUMP OUT
STRADDLE	42.5/49.0	5.87	12826-01
MOUNT FAB	44.0/50.0/51.0	6.87	↓
	53.5/54.5 OLD STYLE	9.00	↓
UNDER MOUNT	42.5/49.0	5.75	10521-00
MOUNT FAB	44.0/50.0/51.0	6.87	↓
	53.5/54.5 OLD STYLE	9.00	↓
ST MT	42.5/49.0	6.00	12826-01
CAST	44.0/50.0/51.0	6.75	↓
UN MT	42.5/49.0	6.00	10521-00
CAST	44.0/50.0/51.0	6.75	↓

©



BUMP OUT LOCATIONS FOR MULTI-AXLE UNITS
SCALE: D-SIZE = 1/16
B-SIZE = 1/32



INSTALLATION SHOWN FOR UNDER MOUNT FAB 42.5/49.0 AXLE SPACING

2011108	C	REDRAWN, REVISED DIM "A", PICTORIALY UPDATED DRAWING, UPDATED DEFAULT DRAWING TO J	06/11	JAJ	SNM	RSB
ER NO.	SYM	REVISIONS	DATE	BY	CHK	APPD
DRAWN: SNM	DATE: 5/6/1988					HUTCHENS INDUSTRIES, INC. SPRINGFIELD, MISSOURI
CHECKED: DCC	DATE: 7/18/1988					
APPROVED: RSB	DATE: 7/25/1988					
MFG APPL: CB	DATE: 8/2/1988					
ER: 8820	DATE: 7/25/1988	INSTALLATION DRAWING BUMP-OUTS - MULTI-AXLE 42.5 THROUGH 54.5 AC				
PROJECT OR FILE REFERENCE NO. REC.# 712-8 PROJ.# 88-312		SCALE: D SIZE - 1/2 B SIZE - 1/4		SHEET 1 OF 1	D	12820

NEXT ASSY:
TOLERANCES (UNLESS OTHERWISE SPECIFIED)
DECIMAL .X ± .1
DECIMAL .XX ± .06
DECIMAL .XXX ± .030
ANGULAR ± 1°
HOLES:
.50 DIA AND LESS: ± .007
.51 DIA AND GREATER: ± .01
REMOVE ALL SHARP BURRS & SHARP CORNERS THAT MIGHT AFFECT ASSEMBLY, APPEARANCE, OR OPERATION OF OUR PRODUCTS.

This confidential drawing is the property of Hutchens Industries, Inc. Hutchens Industries makes no warranties regarding the information on this document. Nothing herein may be transmitted or disclosed in whole or in part to other parties. The recipient of this drawing agrees not to use the information for manufacturing, nor will they modify, distribute, reverse engineer, or create derivative works based on the information contained on the print without the prior written permission of Hutchens Industries, Inc. The recipient agrees not to make copies of the document or reproduce in any manner the information in the document and to return it to Hutchens Industries upon request. Any use of this document is acceptance of the terms stated above.
 DRAWING NO. 12820
 REV. C 1 OF 1