



# Hutchens Industries

## SINGLE POINT SPEC SHEET

NAME	COMPANY
PHONE	EMAIL

AXLE:	OVERSLUNG (SPRING OVER AXLE)	UNDERSLUNG	
TRUNNION:	OVERSLUNG (SPRING OVER TRUNNION)	UNDERSLUNG	
WEIGHT CAPACITY (lbs):	36,000	* 36,000	
	42,000	** 44,000	
	50,000	** 50,000	
	60,000	* Uses 2 leaf springs	
	70,000	** Uses 3 leaf springs	
AXLE SIZE:	5" Rd	TRUNNION HANGER HEIGHT:	* 2 1/2"
	5 3/4" Rd		4 1/2"
	6" Rd		6 1/2"
	5" x 5" Sq		8 1/2"
* Available on 44,000 lb. units or less			
AXLE CENTERS:			
SPRING CENTERS:			
TRUNNION CENTERS:			

### OPTIONS

16793-01 MOUNTING KIT
STRADDLE MOUNT TRUNNION HANGER
FREE OSCILLATING TRUNNION BRUSHINGS
OTHER

COMMENTS
----------

Return via email or fax to Customer Service Department at 417.862.2317

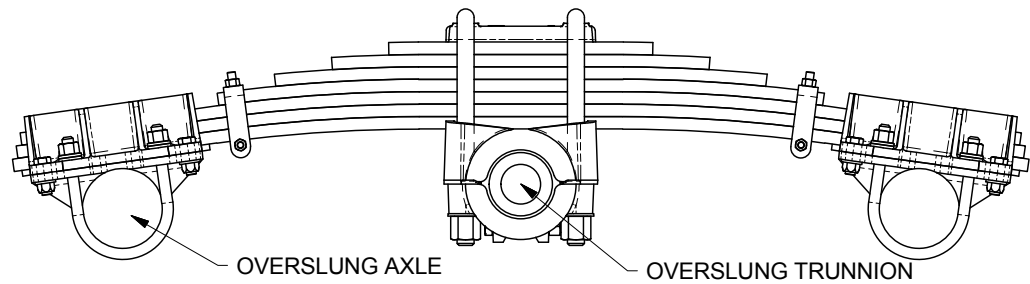
This confidential drawing is the property of Hutchens Industries. Hutchens Industries makes no warranties regarding the information on this document. Nothing herein may be transmitted or disclosed in whole or in part to other parties. The recipient of this drawing agrees not use this information for manufacturing, nor will they modify, distribute, reverse engineer, or create derivative works based on the information contained on this print without the prior written permission of Hutchens Industries. The recipient agrees not to make copies of the document or reproduce in any manner the information in the document and to return it to Hutchens Industries upon request. Any use of this document is acceptance of the terms stated above.

DRAWING NO.

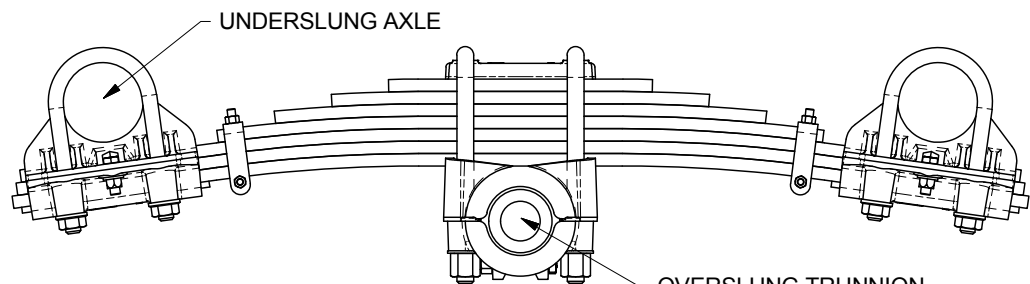
REV.

1 OF 1

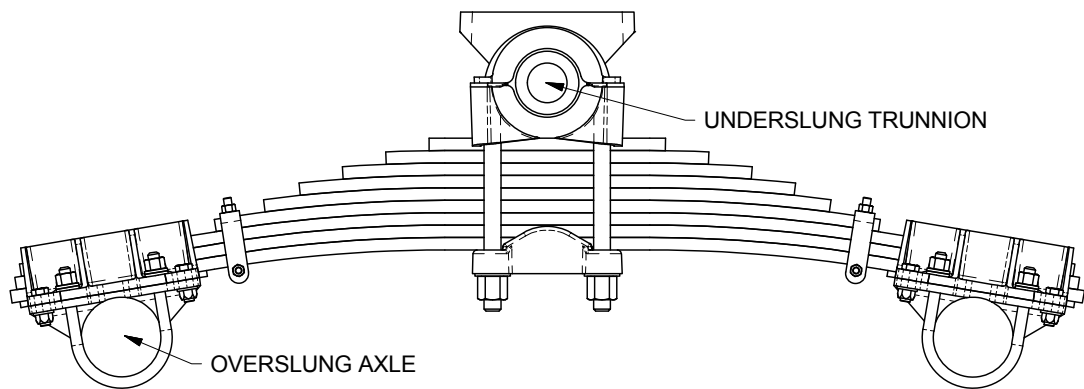
SUSPENSION CONFIGURATIONS



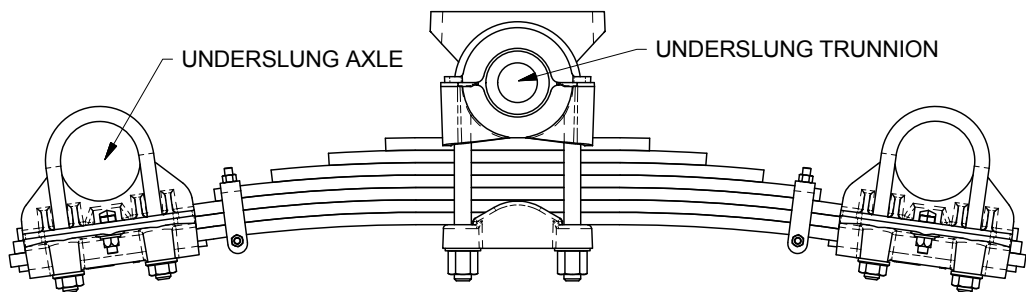
OVERSLUNG / OVERSLUNG  
(OS/OS)



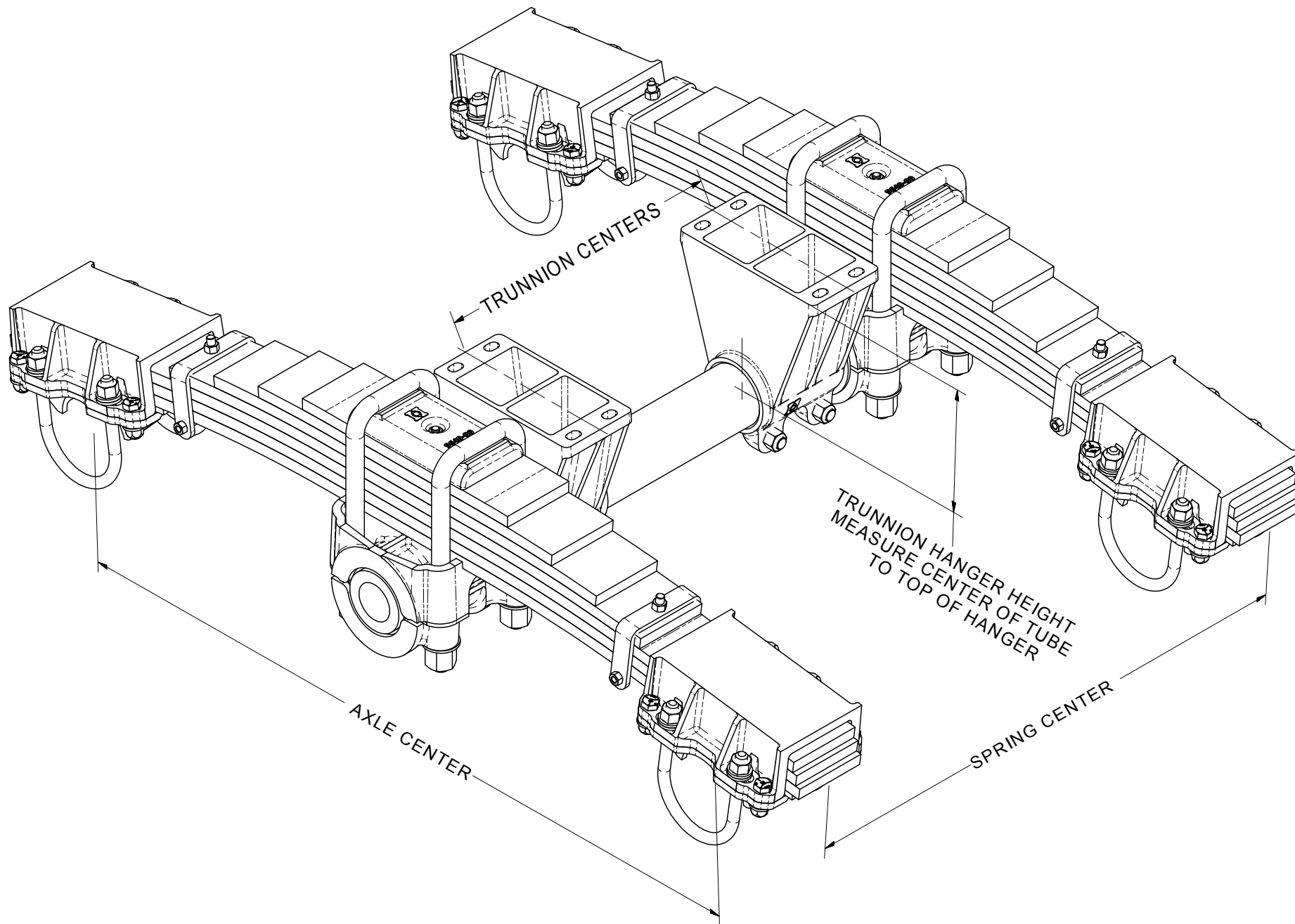
UNDERSLUNG / OVERSLUNG  
(US/OS)



OVERSLUNG / UNDERSLUNG  
(OS/US)



UNDERSLUNG / UNDERSLUNG  
(US/US)



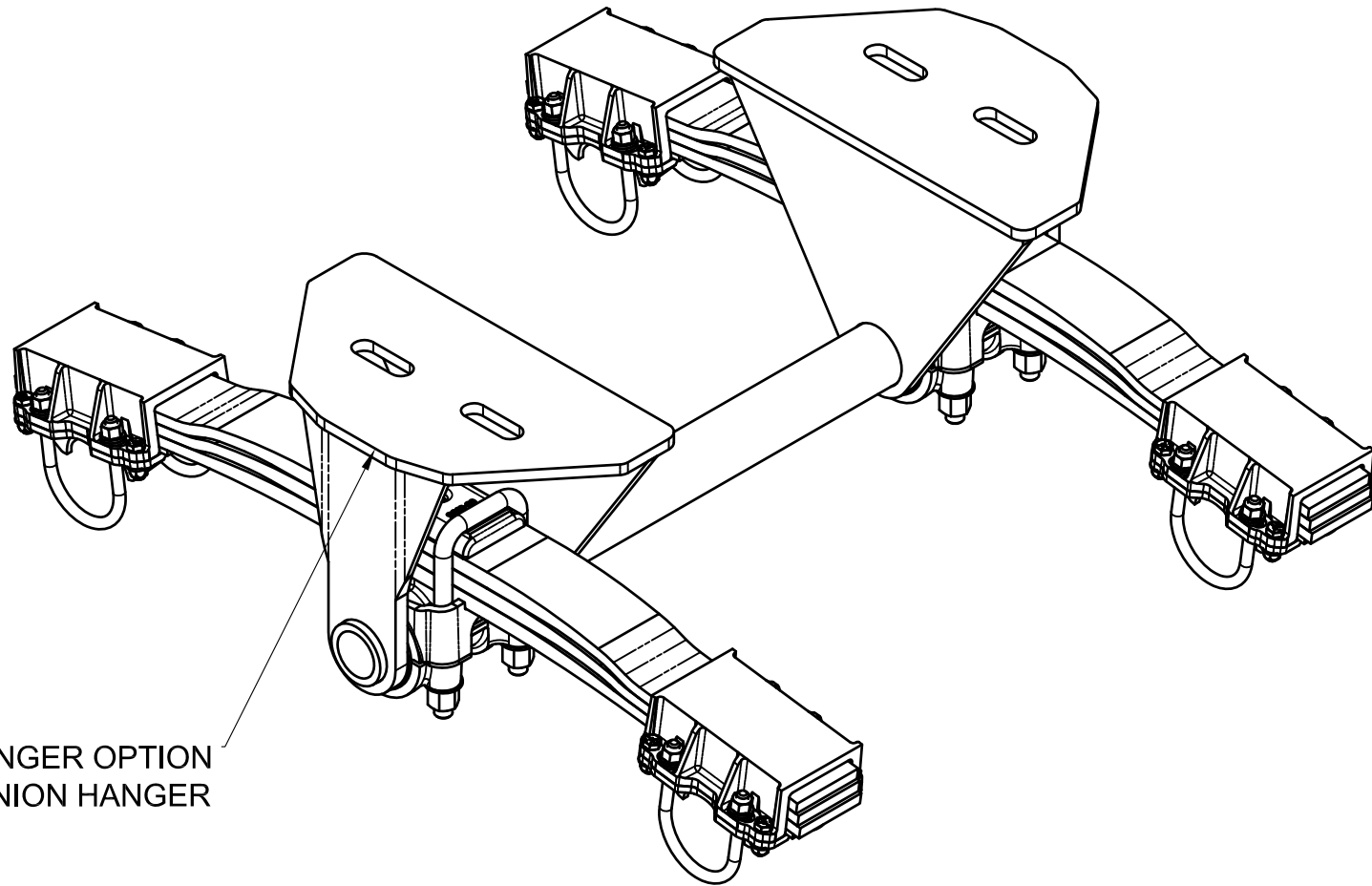
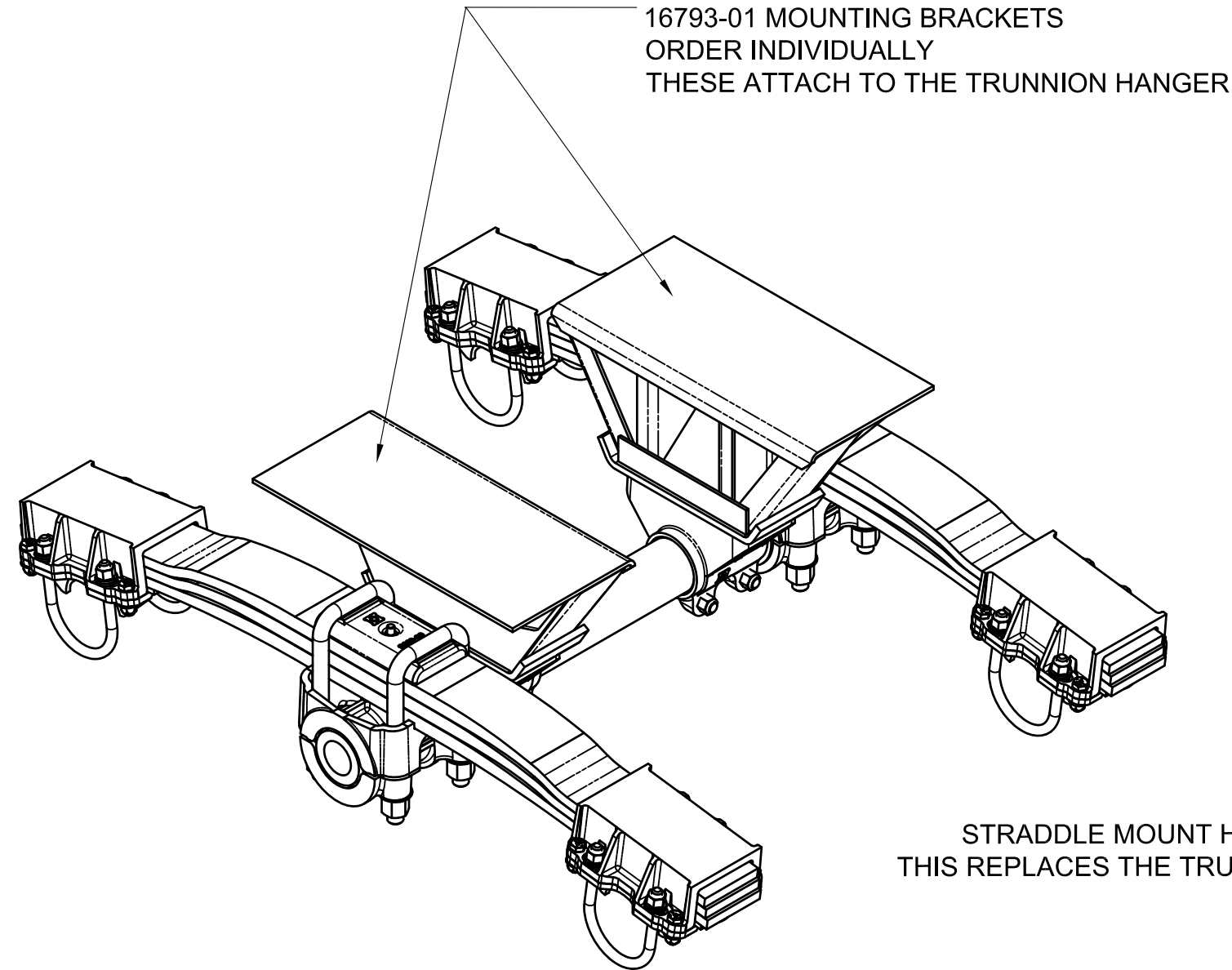
USE THIS DRAWING WITH THE H900 SPEC SHEET TO QUOTE AND / OR ORDER THE H900 SUSPENSION.

NEXT ASSY: NEXT		ER NO. smcdonald	SYM	DATE: 4/7/2016	REVISIONS		DATE	BY	CHK	APPD
		CHECKED: CHK		DATE:	<b>LAYOUT</b>		HUTCHENS INDUSTRIES, INC. SPRINGFIELD, MISSOURI			
		APPROVED: APP		DATE:						
		MFG APPL: N/A		DATE:						
		ER: 2005XXX		DATE:	H900 DIMENSIONS AND CONFIGURATIONS					
		PROJECT OR FILE REFERENCE NO. PROJ#: 2005XXXX EPR#: 2005XXXX-01								
		SCALE: D SIZE - 1/X B SIZE - 1/X			SHEET 1 OF 1		SIZE: D	DRAWING NO.:		REV.:

This confidential drawing is the property of Hutchens Industries. Hutchens Industries makes no warranty regarding the information on this document. Nothing herein may be translated or disclosed in whole or in part to other parties. The recipient of this drawing agrees not to make copies of this document or reproduce in any manner the information in the document and to return it to Hutchens Industries upon request. Any use of this document is acceptance of the terms stated above.

DRAWING NO.:

REV. 1 OF 1



# H900 OPTIONS

NEXT ASSY: NEXT		ER NO.	SYM	DATE	REVISIONS				DATE	BY	CHK	APPD
		DRAWN:	smcdona	7/18/2013								
		CHECKED:	CHK						LAYOUT			
		APPROVED:	APP						HUTCHENS INDUSTRIES, INC. SPRINGFIELD, MISSOURI			
		MFG APPL:	N/A						TITLE:			
		ER:	2005XXX						H900 OPTIONS			
		PROJECT/TITLE/REFERENCE NO.										
		PROJ.#: 2005XXXX										
		EPR#: 2005XXXX-01										
		SCALE:										
		D SIZE - 1/X										
		B SIZE - 1/X										
		SHEET 1 OF 1		D		DRAWING NO.:		REV.:		1 OF 1		