



**The World's Leading  
Manufacturer Of Trailer Sliders  
For Over Five Decades.**

# **SERIES 10**



**Slider**

# **Applications & Parts**



**Advancing the Practical Application of Suspension Technology**

Springfield, MO ■ (800) 654-8824 ■ (417) 862-5012  
Fax (417) 862-2317 ■ [www.hutchensindustries.com](http://www.hutchensindustries.com)

# Series 10 Slider

## Application

The Hutchens Series 10 with 9700 hybrid suspension hangers is designed for Van Trailer (Dry or Refrigerated) applications. The Series 10 works with current Hutchens van slider body rails and can be used anywhere the 9801 spring slider is used. This slider may only be used with overslung axles and the following taper leaf springs: 363-00, 324-01, 325-01, 326-01, 354-00, 355-00, 356-00, 365-00 and 365-01. It can also be used with the 16316-01 Liteflex FRP spring. The hybrid hangers of the Series 10 produce a one inch lower "mounting height" than the straddle mount hangers of the H9700 series. Also, the frame height of the Series 10 is 9 1/4" (not including body rails) which is one inch taller than the 9801. The combination of the new hanger design and taller frame makes the "total" mounting height the same as the 9801 (when using the same springs and seat heights).

## Capacity

The Series 10 gross axle weight rating (G.A.W.R.) is limited to a maximum of 25,000 lbs./axle resulting in an overall maximum capacity of 50,000 lbs., per unit.

## Features

- ▶ 9" deep frame made from high strength, 76 KSI minimum yield steel.
- ▶ C-Channel side rails with optimized flange contours reduce weight and resist corrosion.
- ▶ Individual hanger towers provide vertical load support.
- ▶ The insides of the hanger towers are Sharpf® soft coated for increased corrosion resistance.
- ▶ Full depth crossmembers provide optimal lateral support.
- ▶ Huck® fasteners at high stress crossmember attachments.
- ▶ Low profile hybrid spring hangers reduce frame stresses.
- ▶ Strategically placed, large diameter lock pins and heavy duty hold down clips resist braking loads and sliding forces.
- ▶ Structurally designed for maximum durability at impact zones.
- ▶ Maintenance free, Huck® fastened rocker connection.
- ▶ Hutch's locator bar...the industry's best compromise in weight and strength.
- ▶ Backed by Hutchens' ten year warranty.

## Options

Body rails with holes in 4" increments up to 448" long. Several different coating options are also available.

## How To Order Your Series 10 Slider Assembly

As discussed above, the Series 10 slider may only be used with overslung axles and the following taper leaf springs: 363-00, 324-01, 325-01, 326-01, 354-00, 355-00, 356-00, 365-00 and 365-01. It can also be used with the 16316-01 Liteflex FRP spring.

1. Determine the frame width needed for your particular application. The deeper frame combined with shorter "hybrid" hangers produces the same overall mounting height as that of our 9801 slider assembly. **See Figs. 1 and 2.**
2. Select the range of slide adjustment you need and determine the body rail length required to provide that range. The Series 10 will work with current Hutchens van slider body rails. **See Chart A.**
3. A locator bar assembly is a standard component with every Hutchens slider. **See Chart B.** The locator bar should be

used as directed when re-positioning the slider. **See "To Position The Sliding Suspension."**

4. The Series 10 must be ordered by a description of the slider.

### Example:

A Series 10 slider with 48" frame width, 49" axle centers, 192" body rails and a locator bar would be ordered as follows:

Quantity	Model	Frame Width	Body Rail Length	With Locator Bar
1 ea.	Series 10	48"	192"	w/ Locator Bar
1 ea.	Series 10 – 48 – w/192" body rails and locator bar*			

\* If you are ordering a complete suspension with the slider, a description of the unit must follow (i.e. 3/4" seats for 5" round axles, less standard 3 leaf springs with 7040-08 U-bolts).

Fig. 1

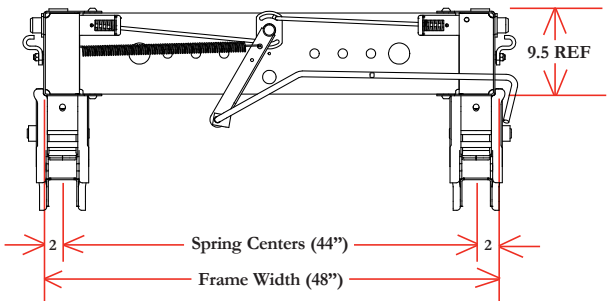
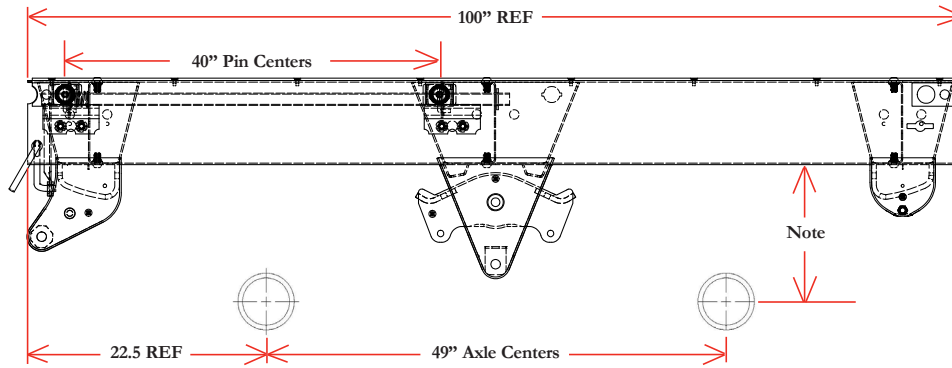




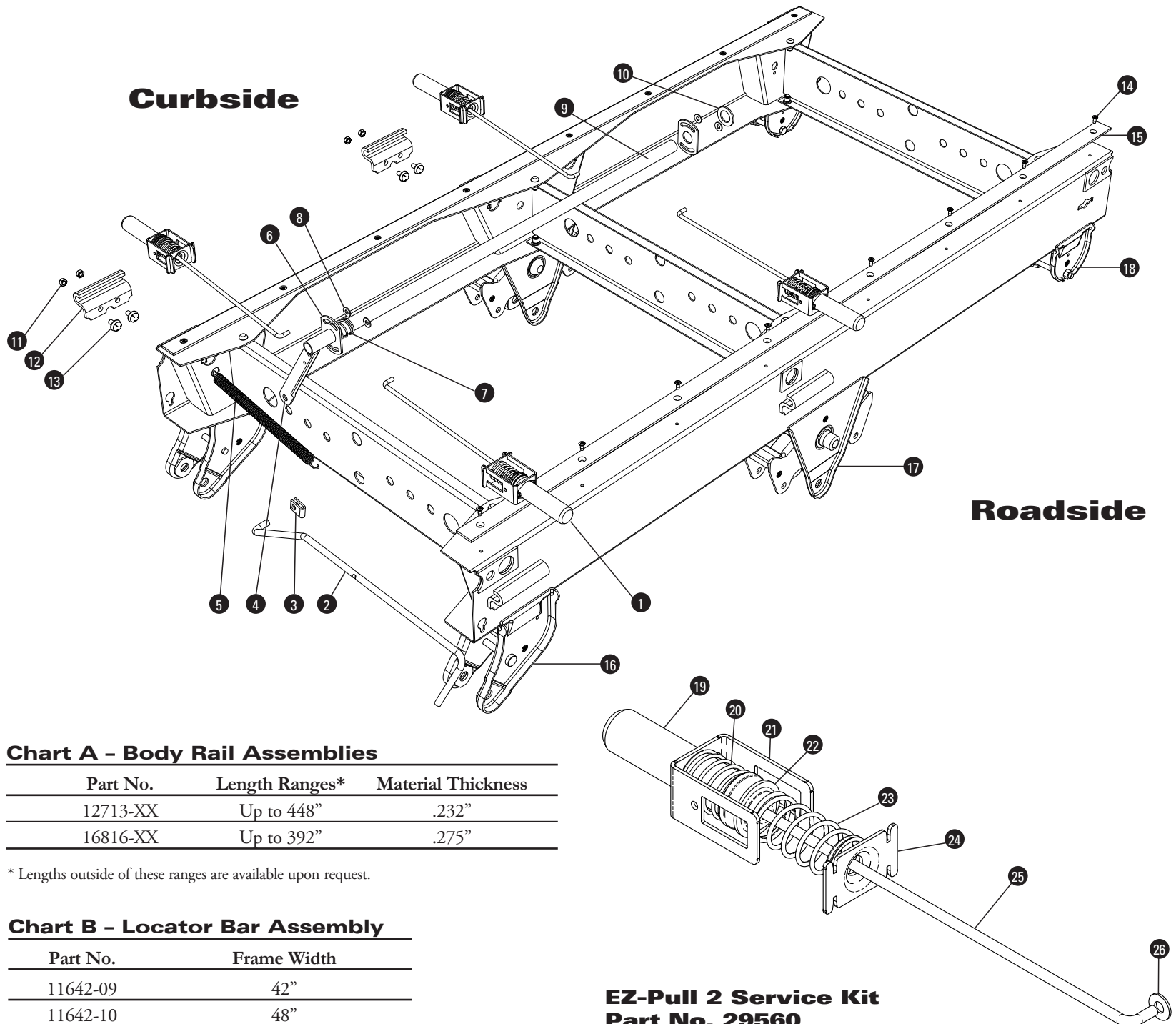
Fig. 2

Note: Mounting heights for the Series 10 hangers are 1" less than standard H9700 straddle mount hangers.



## Curbside

## Roadside



**Chart A - Body Rail Assemblies**

Part No.	Length Ranges*	Material Thickness
12713-XX	Up to 448"	.232"
16816-XX	Up to 392"	.275"

\* Lengths outside of these ranges are available upon request.

**Chart B - Locator Bar Assembly**

Part No.	Frame Width
11642-09	42"
11642-10	48"

**EZ-Pull 2 Service Kit**  
**Part No. 29560**

Bill of Materials

		Quantity		
Item	Part No.	48" Frame	42" Frame	Description
1	29560-01	4	0	EZ Pull 2 Service Kit – See Chart C Below
	29560-02	2	2	EZ Pull 2 Service Kit – See Charts C and D Below
2	27384-01	1	1	Pull Handle
3	11409-01	1	1	Handle Clip
4	19224-01	1	1	Crank
5	8018-01	0	1	Spring-Helix 12 GA X 1 PD X 8-5/8 For 42" Wide
	8018-02	1	0	Spring-Helix 12 GA X 1 PD X 10-1/8 For 48" Wide
6	28172-01	2	2	Cam – EZ Pull
7	18064-01	1	1	Compression Spring
8	177-00	4	4	3/8 Flat Washer
9	8010-29	1	1	Pipe 1" Standard 50 LG
10	9224-00	1	1	Washer .173 X 1.38 X 2.25
11	28692-01	8	8	Hex Locknut – Coated, 1/2-20 UNF – 2B, GR B
12	20289-01	4	4	Hold Down Clip
13	29005-01	8	8	Rd Head Short Sq Neck Bolt and Washer Assy - ZN Coated
14	9627-00	16	16	Thread Form Screw
15	11421-32	2	2	Slider Pad 99" LG
16	29024-01*	1	1	Front Hanger Series 10 w/Rivet Left Half (Roadside)
	29024-02*	1	1	Front Hanger Series 10 w/Rivet Right Half (Curbside)
17	25589-01*	2	2	Center Hanger/Rocker Assembly Series 10
18	25576-01*	1	1	Rear Hanger Series 10 Left Half (Roadside)
	25576-02*	1	1	Rear Hanger Series 10 Right Half (Curbside)

\* **Note:** Series 10 hangers require specific welding procedures. Refer to drawing 26474 for the proper hanger replacement instructions.

Chart C – EZ-Pull 2 Service Kit Part No. 29560-01  
48" Frame Width - Use roadside and curbside  
42" Frame Width - Use roadside only

Item	Part No.	Quantity	Description
19	18818-01	1	Lock Pin 6.30 LG
20	18820-01	1	Pin Retraction Spring
21	27387-01	1	EZ Pull Spring Cage
22	18815-01	1	Washer – SPCL
23	18819-01	1	Pin Engagement Spring
24	27386-01	1	Spring Cage Plate For No Weld Cage
25	23334-01**	1	Linkage Rod EZ Pull – 17.94 LG For 48" Wide
26	177-00	1	3/8" Flat Washer

\*\* **Note:** Use this kit, with the 23334-01 linkage rod, on both the roadside and the curbside of the 48" wide unit. Use this kit, with the 23334-01 linkage rod, on the roadside only of the 42" wide unit.

Chart D – EZ-Pull 2 Service Kit Part No. 29560-02  
42" Frame Width – Use curbside only. Use the 29560-01 roadside.

Item	Part No.	Quantity	Description
19	18818-01	1	Lock Pin 6.30 LG
20	18820-01	1	Pin Retraction Spring
21	27387-01	1	EZ Pull Spring Cage
22	18815-01	1	Washer – SPCL
23	18819-01	1	Pin Engagement Spring
24	27386-01	1	Spring Cage Plate For No Weld Cage
25	23334-27***	1	Linkage Rod EZ Pull – 13.63 LG For 42" Wide
26	177-00	1	3/8" Flat Washer

\*\*\* **Note:** Use this kit, with the 23334-27 linkage rod, on the curbside only of the 42" wide unit.

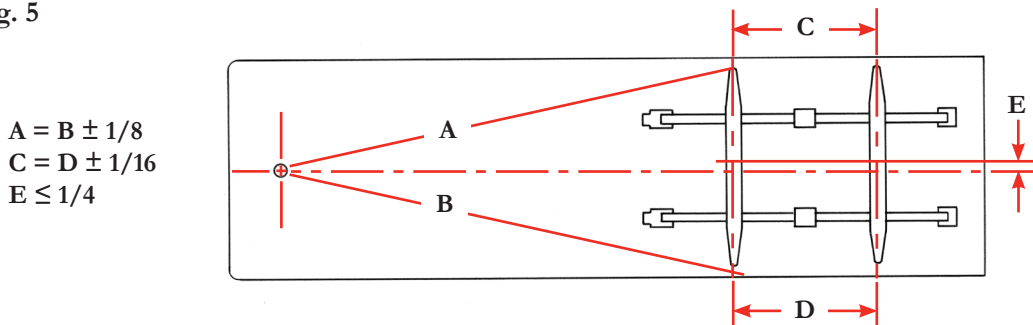
## Suspension Alignment

ALIGNMENT CAN ONLY BE ACHIEVED IF THE LOCKPIN HOLES ARE EVENLY LOCATED FROM THE KINGPIN, LEFT AND RIGHT. ALIGNMENT SHOULD ALWAYS BE DONE WHILE THE TRAILER IS EMPTY.

To properly align the suspension attached to your Series 10 slider, the trailer should be pulled in a straight line for a sufficient distance to ensure there are no binds in the suspension. The trailer should then be pulled straight forward with the trailer brakes locked, so the locking pins rest against the rear of the holes in the body rails. This approximates the position of the pins when the trailer is being pulled on a highway and ensures proper trailer tracking. Alignment can be achieved with an optical device designed especially for this purpose, or manually in the following manner.

- a) Measure the distance from the kingpin to the centerline of the spindles on the front axles. It is recommended that spindle extensions be utilized. As noted in **Fig. 5**, dimensions A and B must be equal within 1/8 of an inch. Alignment is accomplished by loosening the radius rod clamp bolts on both ends of the adjustable radius rod and turning the adjustment screw as required.

Fig. 5



- b) After the front axle is aligned, tighten the 5/8" radius rod clamp bolts to 170 - 204 lb-ft (dry), 130 - 156 lb-ft (lubricated/coated) torque in order to lock the position of this axle. Next, align any succeeding axles with the front axle by following the same procedure.
- ▶ Loosen the radius rod clamp bolts, turn the adjustment screw until dimensions C and D are equal within 1/16" of each other, then tighten the clamp bolts to the proper torque.
  - ▶ Check dimension E, the lateral centerline relationship of the trailer body and axles. If E exceeds 1/4", contact the trailer manufacturer for recommendations.
  - ▶ After alignment has been completed on all axles, all 5/8" radius rod clamp bolts should be rechecked to make certain that they are tightened to the necessary 170 - 204 lb-ft (dry), 130 - 156 lb-ft (lubricated/coated) torque.
  - ▶ Relocate the slider to the forward position and recheck the kingpin alignment. Variance in A and B dimensions would indicate lock pin hole discrepancies.
  - ▶ Refer to Truck Trailer Manufacturers Association (TTMA) Recommended Practice RP No. 71 and The Maintenance Council (TMC) Recommended Practice RP 708D for more details.

## To Position The Sliding Suspension

1. Set both the tractor and trailer brakes.
2. Remove the locator bar from behind the slider and move to desired location.
3. To release the lock pins, pull the operating handle all the way out and lock in place.
4. Release the tractor brakes and carefully drive forward or backward until the sliding suspension is at the desired location.
5. Release the operating handle and visually check all lock pins for locking. The main body of each lock pin must extend through the holes in the rails.
6. Lock the locator bar in both rails immediately behind the slider.
7. With the trailer brakes applied, gently rock the trailer backward and forward to ensure the sliding suspension is properly locked, and follow the procedures set out above before pulling the trailer. The lock pins must be checked at each stop to ensure each is locked.

## Important: Warning Decal Note

When the installation of your “Hutch” slider is complete and the trailer and/or subframe has been painted, the decal (shown here) must be installed in plain view on the roadside of the trailer immediately above the suspension. The decal must be in plain view on each trailer equipped with a “Hutch” slider and must be read before using the sliding suspension. Decals are shipped with the slider units. If decals are not received, or if for any reason additional decals are wanted, contact our Customer Service Department at 1 (800) 654-8824 or fax (417) 862-2317 and decals will be shipped promptly at no charge.

